

Mounting accessories for fuse holder



Metal Nut

Plastic Nut

See below:
[Approvals and Compliances](#)

Description

| | | |
|-----------------------|------------|-------|
| - Mechanical Data | | |
| Mounting screw torque | M12.7, M16 | 1.2Nm |
| Mounting screw torque | M18.5 | 2.4Nm |

Weblinks

[pdf data sheet](#), [html datasheet](#), [General Product Information](#), [Distributor-Stock-Check](#), [Detailed request for product](#), [Microsite](#)

Technical Data

| | |
|------------------------------|----------------------------|
| Admissible Ambient Air Temp. | -40°C to 85°C |
| Storage Conditions | 0°C to 60°C, max. 70% r.h. |




Approvals and Compliances

Detailed information on product approvals, code requirements, usage instructions and detailed test conditions can be looked up in [Details about Approvals](#)

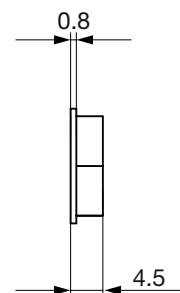
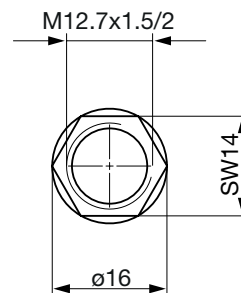
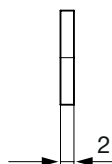
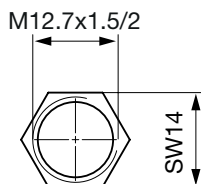
SCHURTER products are designed for use in industrial environments. They have approvals from independent testing bodies according to national and international standards. Products with specific characteristics and requirements such as required in the automotive sector according to IATF 16949, medical technology according to ISO 13485 or in the aerospace industry can be offered exclusively with customer-specific, individual agreements by SCHURTER.

Compliances

The product complies with following Guide Lines

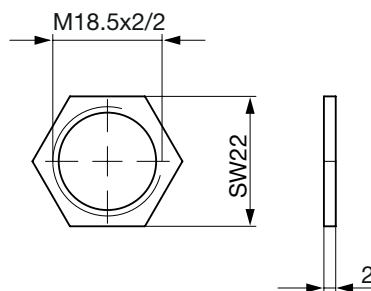
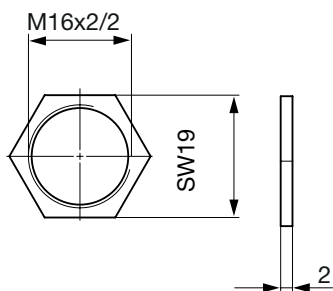
| Identification | Details | Initiator | Description |
|---|------------|-------------|---|
|  | RoHS | SCHURTER AG | Directive RoHS 2011/65/EU, Amendment (EU) 2015/863 |
|  | China RoHS | SCHURTER AG | The law SJ / T 11363-2006 (China RoHS) has been in force since 1 March 2007. It is similar to the EU directive RoHS. |
|  | REACH | SCHURTER AG | On 1 June 2007, Regulation (EC) No 1907/2006 on the Registration, Evaluation, Authorization and Restriction of Chemicals 1 (abbreviated as "REACH") entered into force. |

Dimension [mm]



0098.0026
 Max. torque 1.2 Nm

0098.0043
 Max. torque 1.2 Nm



3-129-865
 Max. torque 1.2 Nm

3-129-864
 Max. torque 2.4 Nm

All Variants

| Suitable for | Designation | Material | Packaging unit [PCS] | Order Number |
|---|-------------------------|----------|----------------------|--------------|
| FEF, FEP, FEU, FIN, FIO, FPG1, FPG2, SWA1 (Frontpl), SWA2 (Print) | Metal nut M12.7 x 1.5 | Brass | 100 | 0098.0026 |
| FEF, FEP, FEU, FIN, FIO, FPG1, FPG2, SWA1 (Frontpl), SWA2 (Print) | Plastic nut M12.7 x 1.5 | Plastics | 100 | 0098.0043 |
| FIZ, FUL | Metal nut M18.5 x 2 | Brass | 25 | 3-129-864 |
| FEC | Metal nut M16 x 2 | Brass | 50 | 3-129-865 |

Availability for all products can be searched real-time: <https://www.schurter.com/en/Stock-Check/Stock-Check-SCHURTER>

Mouser Electronics

Authorized Distributor

Click to View Pricing, Inventory, Delivery & Lifecycle Information:

[Schurter:](#)

[3-129-864](#)