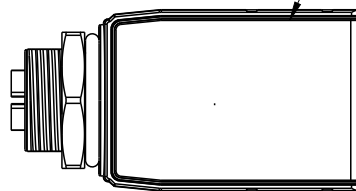
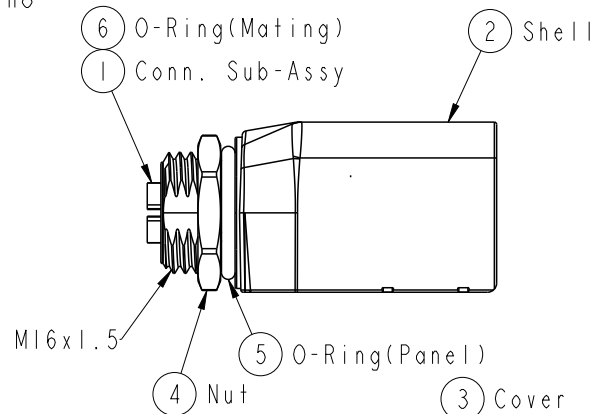
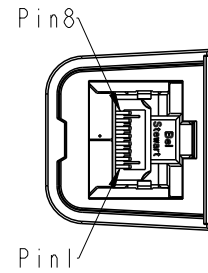
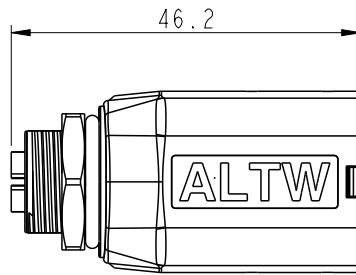
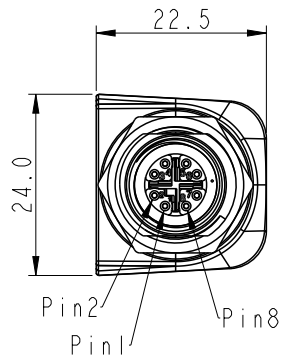


ALTW
CONFIDENTIAL
2017-11-24
R&D DEPT.

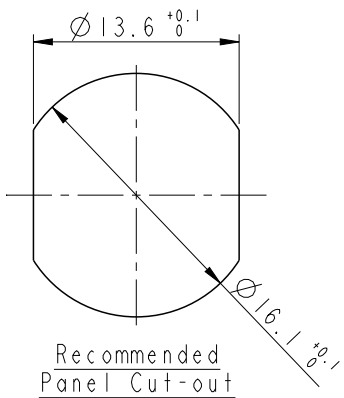
ALTW
DCC. DEPT.
CONFIDENTIAL
2017.12.12
ISSUED

REV.	ECN NO.	DATE	SIGN	DESCRIPTION



Note:

- * \varnothing Important Dimension to Check.
- * Waterproof Rate: IP67 Unmated (M12 side)
- * M12 Housing: Nylon+GF, Black
- * M12 Female Pin: Copper Alloy, Gold Plated
- * RJ45 Contacts: Copper Alloy, Gold Plated
- * Shell: Zinc Alloy, Nickel Plated
- * Cover: Nylon+GF, Black
- * Nut: Zinc Alloy, Nickel Plated
- * Temperature Range: -25~+85°C
- * Transmission Rate: FLUKE TIA Cat 6A Perm. Link
- * Panel Thickness Max.: 3.0mm



8	4
7	5
6	8
5	7
4	6
3	3
2	2
1	1

M12 RJ45
Pin Connection

UNIT: mm		
TOLERANCE		
.X	± 0.25	
.XX	± 0.1	
.XXX	± 0.05	
ANGLES	$\pm 1^\circ$	

TITLE M12 X-code to RJ45 ADAPTER STRAIGHT			
SCALE 1:1	SIZE A4	SHEET 1 OF 1	
REV. A	WC-REV. A.28	\varnothing : Inspection item	

Amphenol LTW
安費諾亮泰企業股份有限公司

ITEM NO. RJS-12X08FF-LS7001	DRAWN BY Gaotong	DATE 2017/11/24
DWG NO. RJS-12X08FF-LS7001	CHECKED BY Neo	DATE 2017/11/24
CUSTOMER ALTW	APPROVED BY Max	DATE 2017/11/24

THIS DOCUMENT IS SUBJECT TO CHANGE WITHOUT NOTICE. IT IS CONFIDENTIAL AND A PROPERTY OF Amphenol LTW. DISCLOSURE TO THIRD PARTY HAS TO BE AUTHORIZED BY Amphenol LTW.

Mouser Electronics

Authorized Distributor

Click to View Pricing, Inventory, Delivery & Lifecycle Information:

[Amphenol:](#)

[RJS-12X08FF-LS7001](#)