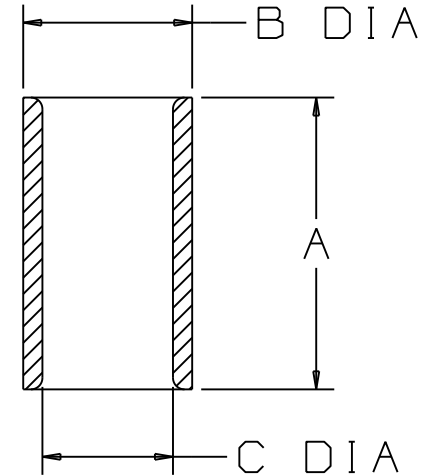


PANDUIT PART NUMBER	WIRE COMBINATION (COMBINATION OF ANY TWO)	DIMENSIONS in.		
		A $\pm .03$	B $\pm .01$	C $\pm .01$
PS18	#22 TO #18	.29 (7.4)	.13 (3.3)	.10 (2.5)
PS16	#20 TO #16	.29 (7.4)	.16 (4.1)	.12 (3.0)
PS12	#14 TO #12	.38 (9.7)	.22 (5.6)	.17 (4.3)

NOTES:

1. UL LISTED AND CSA CERTIFIED FOR:
A. SOLID OR STRANDED COPPER WIRE
2. MATERIAL: BRASS, TIN PLATED
3. SEE www.panduit.com FOR PART NUMBER SUFFIX DESIGNATION FOR PACKAGE SIZE.
4. DIMENSIONS IN BRACKETS ARE IN MILLIMETERS
5. INSTALLATION TOOLS:
A. UL LISTED AND CSA CERTIFIED: CT-100, CT-200
B. PANDUIT APPROVED: CT-260
6. WIRE STRIP LENGTH: $5/16^{+1/32}_{-0}$ (7.9 $^{+.8}_{-0}$)
 $7/16^{+1/32}_{-0}$ (11.1 $^{+.8}_{-0}$) FOR PS12



LISTED
587H
E52164



CERTIFIED
LR31212

REV	DATE	BY	CHK	DESCRIPTION	ECN #	CUST	PM
06	5/11	SB		Added Note #3			

PANDUIT

CORP.

TINLEY PARK, ILLINOIS

NON-INSULATED PARALLEL SPLICE

DRAWN BY: DRL CHK'D: SCALE: NONE DRAWING NO.: A41339

Mouser Electronics

Authorized Distributor

Click to View Pricing, Inventory, Delivery & Lifecycle Information:

[Panduit:](#)

[PS12-D](#) [PS12-L](#) [PS16-C](#) [PS18-C](#) [PS18-M](#) [PS16-M](#)