

Photo Interrupter Sensor, Speed Measuring



Overview

- Infrared detection, eliminating the interferences of external stray light
- Schmitt trigger, stable wave form and signals
- Signal output indicator (while breaking the beam, outputs low level, the indicator lights up)

Specifications

- Power: 3.3V ~ 5V
- Dimension: 26.8mm × 15mm × 18.7mm
- Mounting holes size: 3mm
- Gap width: 6mm

Applications

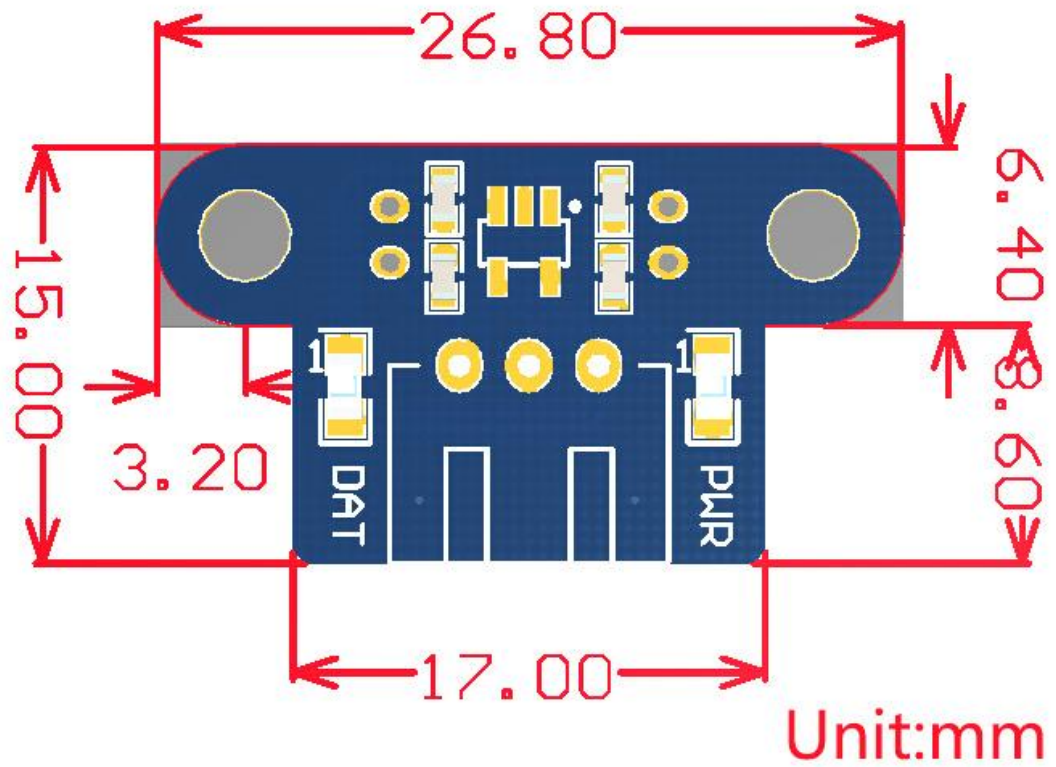
- Motor speed detection
- Pulse counter

How to Use

In the case of working with a MCU:

- VCC ↔ 3.3V ~ 5V
- GND ↔ GND
- DOUT ↔ MCU.IO (digital output)

Dimensions



Development Resources

Wiki : www.waveshare.com/wiki/Photo_Interrupter_Sensor