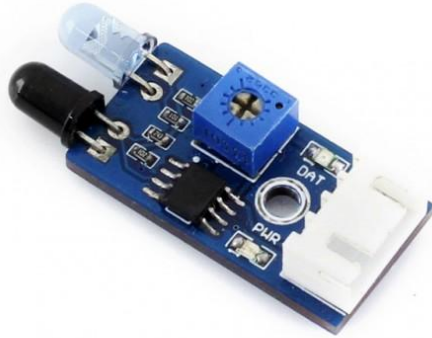


# Infrared Proximity Sensor, Obstacle-Avoiding



Infrared Proximity Sensor, robot obstacle-avoiding module

## Overview

- Emitting a beam of infrared, and receive the reflected beam
- Features wide range voltage comparator LM393
- Adjustable sensitivity
- Signal output indicator

## Specifications

- Power: 3.3V ~ 5V
- Dimension: 39mm × 15.5mm (include the IR LED)
- Mounting holes size: 3mm
- Detection range: 2cm ~ 30cm (depending on the obstacle's color, farthest for white)
- Detection angle: 35°
- Recommended environment: in door, to avoid the sunshine effect

## Applications

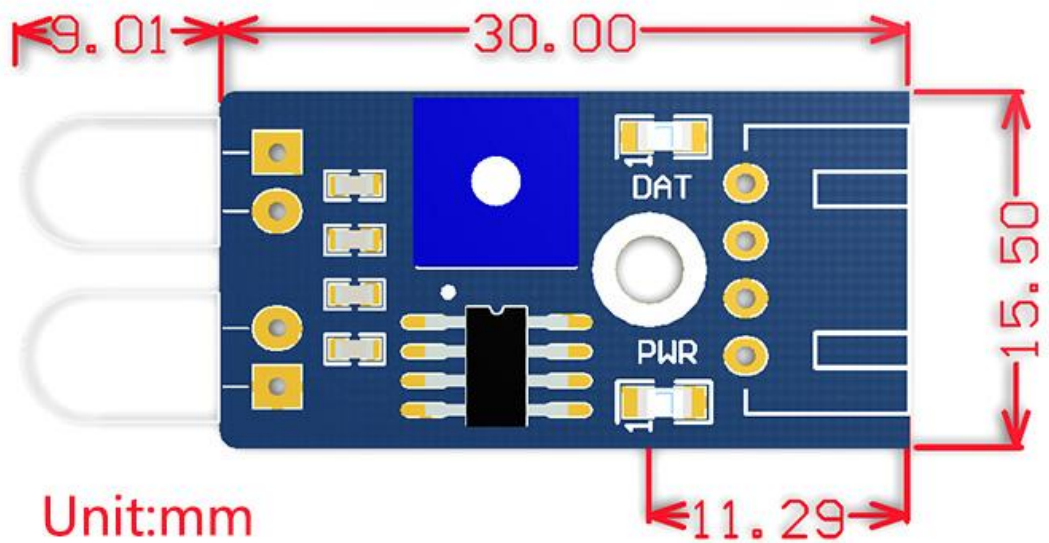
- Robot path tracking
- Obstacle-avoiding car
- Pipeline counter

## How to Use

In the case of working with a MCU:

- VCC ↔ 3.3V ~ 5V
- GND ↔ GND
- AOUT ↔ MCU.IO (analog output)
- DOUT ↔ MCU.IO (digital output)

## Dimensions



## Development Resources

**Wiki :** [www.waveshare.com/wiki/Infrared\\_Proximity\\_Sensor](http://www.waveshare.com/wiki/Infrared_Proximity_Sensor)