

PCB Series

KLS2-102-5.00 Series Pitch=5.00mm/10.00mm

Electrical :

Rated voltage: 300V
Rated current: 16A
Contact resistance: 20mΩ
Insulation resistance: 5000MΩ/1000V
Withstanding Voltage: AC1500V/1Min
Wire range: 22-12AWG 2.5mm²

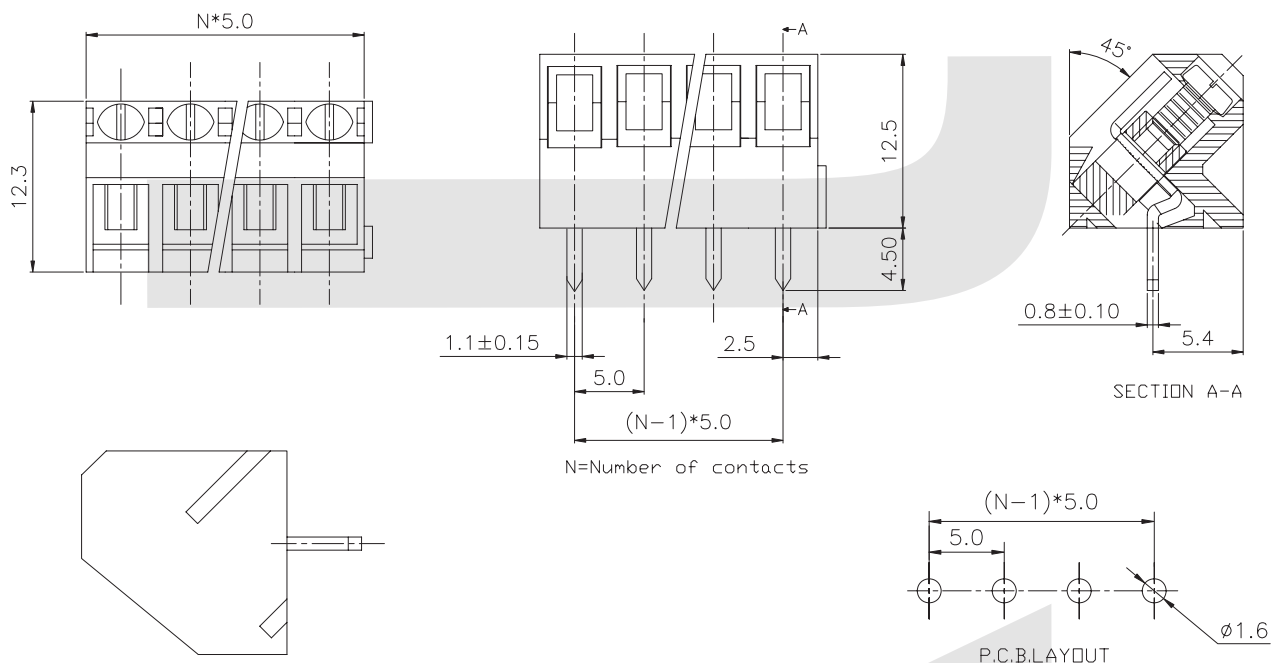
Material

Screws: M2.5 steel Zinc plated
Wire guard: phosphor bronze Ni plated or stainless steel
Pin header: Brass, Tin plated
Housing: PA66, UL94V-0



Mechanical

Temp. Range: -40°C~+105°C
MAX Soldering: 250°C for 5 Sec.
Torque: 0.4Nm (3.6lb.in)
Strip length: 4.5-5mm



ORDER INFORMATION

Product No.: KLS2-102-5.00-XXP-X X-X

Pos. No. _____ Customer Request _____

Series No. _____ Screw: C=Cross Screw
S=Slot Screw

Pitch: 5.00=5.00mm _____ Color: 1=Gray 2=Blue 3=Black
10.00=10.00mm _____ 4=Green 5=Orange 6=Red
Number of Pole _____ 7=Transparent 8=Yellow 9=White