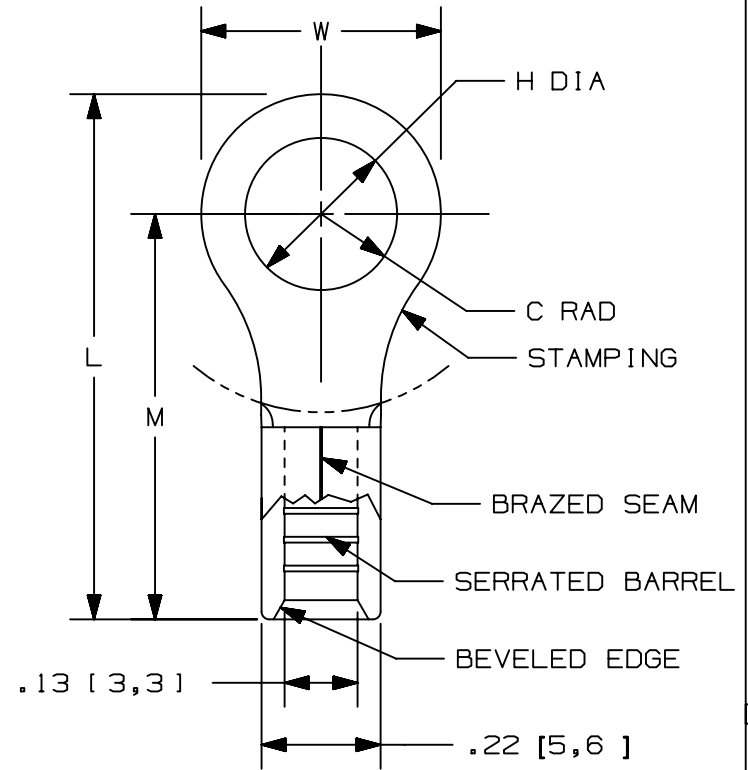


THIS COPY IS PROVIDED ON A RESTRICTED BASIS AND IS NOT TO BE USED IN ANY WAY DETRIMENTAL TO THE INTERESTS OF PANDUIT CORP.

PANDUIT PART #	MILITARY PART NO. AND CLASS	STUD SIZE		DIMENSIONS in. [mm]				
		ENGLISH	METRIC	L ± .03 [0,76]	W ± .01 [0,25]	C ± .02 [0,51]	M ± .03 [0,76]	H ± .01 [0,25]
PM6-3R	-----	--	M3	.76 [19,2]	.23 [5,8]	.31 [7,9]	.62 [15,8]	.13 [3,3]
P10-6R	MS20659-165 CLASS 1 & 2	#6	M3,5	.78 [19,8]	.31 [7,9]	.31 [7,9]	.62 [15,8]	.15 [3,8]
P10-8R	-----	#8	M4	.78 [19,8]	.31 [7,9]	.31 [7,9]	.62 [15,8]	.17 [4,3]
P10-10R	MS20659-105 CLASS 1 & 2	#10	--	.81 [20,6]	.38 [9,7]	.31 [7,9]	.62 [15,8]	.20 [5,1]
PM6-5R	-----	--	M5	.81 [20,6]	.37 [9,50]	.31 [7,9]	.62 [15,8]	.21 [5,3]
P10-14R	-----	1/4"	M6	.96 [24,4]	.52 [13,2]	.38 [9,7]	.70 [17,8]	.27 [6,9]
P10-56R	MS20659-106 CLASS 1 & 2	5/16"	M6	.95 [24,1]	.52 [13,2]	.38 [9,7]	.70 [17,8]	.33 [8,4]
P10-38R	MS20659-128 CLASS 1 & 2	3/8"	M8	1.05 [26,7]	.58 [14,7]	.44 [11,2]	.75 [19,1]	.39 [9,9]
P10-12R	-----	1/2"	--	1.20 [30,5]	.72 [18,3]	.53 [13,5]	.84 [21,3]	.52 [13,2]



- NOTES:
- USED FOR:
    - 14-10 AWG [2,5-6,0 mm<sup>2</sup>] SOILD OR STRANDED COPPER WIRE
    - 302°F [150°C] MAX. TEMP. RATING
  - INSTALLATION TOOLS:
    - UL LISTED AND CSA CERTIFIED:
      - CT-100A, CT-200, CT-600-A (CT-570CH)
      - CT-1570, CT-1701, CT-2500 (CT-2570CH)
    - PANDUIT APPROVED: CT-160, CT-260
  - WIRE STRIP LENGTH: 9/32 <sup>+1/32</sup> [7,1 <sup>+0,8</sup>]
  - MATERIAL:
    - STAMPING: .04" [1,0] THK COPPER, TIN PLATED
  - SEE [www.panduit.com](http://www.panduit.com) FOR PACKAGE QUANTITIES INDICATED BY PART NUMBER SUFFIX
  - DIMENSIONS IN BRACKETS ARE METRIC EQUIVALENT



LISTED  
587H  
E52164



CERTIFIED  
LR31212

REV	DATE	BY	CHK	APR	DESCRIPTION	ECN
11	12-15-17	JEH	SKB	JADE	CORRECTED NOTE 1 WAS 12-10 AWG [ 4.0-6,0 mm <sup>2</sup> ]	019893
10	08.30.12	JBN	LCA	VMB	REVISED NOTE #6A. REVISED INSTALLATION TOOLS NOTE. UPDATED DRAWING TO CURRENT STANDARD. ADDED METRIC EQUIVALENTS.	A41188

TITLE		RING TERMINALS, NON-INSULATED, #12-10	
ITEM REVISION NAME		CUSTOMER DRAWING	
DATASET FILE NAME		N41188BB/11	
MATERIAL:		SEE NOTES	
DRAWING NUMBER:		A41188	
UNLESS OTHERWISE SPECIFIED, DIMENSIONAL TOLERANCES ARE: IN [mm]	DRAWING NUMBER:		
.x ± .1 [ 2.54 ]	DRAWING NUMBER:		
.xxx ± .005 [ .13 ]	DRAWING NUMBER:		
.xx ± .01 [ .25 ]	DRAWING NUMBER:		
ANGLES ± 5 °	DRAWING NUMBER:		
THIRD ANGLE PROJECTION	DRAWING NUMBER:		
DRAWN BY	DATE	CHK	SCALE
FES	-	LCA	N.T.S.
SHEET 1 OF 1		A	

# Mouser Electronics

Authorized Distributor

Click to View Pricing, Inventory, Delivery & Lifecycle Information:

[Panduit:](#)

[PM6-3R-L](#) [P10-10R-D](#) [P10-14R-D](#) [P10-38R-D](#) [P10-56R-D](#)