

BOS

BOS 500 with panoramic display screen and compartment for 9V block battery



BOS 500

Order no.: 34500000

* = Available on request.

Characteristics

Colour of enclosure group

Black, similar to RAL 9005

Colour of enclosure group

Black

Protection class

IP 40

Enclosure Material

ABS, seal made of CR; for details see Technical Information

Scope of delivery

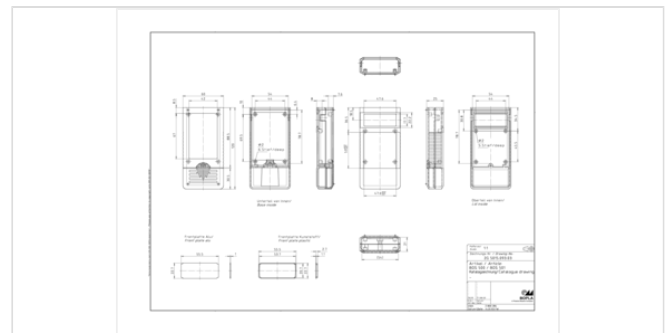
Lid, base, front panel, battery compartment lid, screw,
panoramic display screen

Dimensions

Dimensions

120 x 60 x 25 mm

Product drawing



Important!

To compensate for pressure when temperatures change and cause moisture in the enclosure, we recommend that you use a pressure compensation element.

» Additional information

Technical documentation / Downloads

Technical drawings

3D product data in STEP format: Registration necessary

Product drawing in PDF format: 34500000 BOS-500.pdf (67.4 KB)

Product drawing in DXF format: 34500000 BOS-500.dxf (750.1 KB)

Drawing for mechanical processing: 34500000 BOS-500-G.dxf (648.1 KB)

Milling contours are shown here as a DXF file. (Sub D, USB, HDMI, cable glands, ...)

20.09.2019

Product information

BOS GB.pdf (746.5 KB)

Matching accessories



Universal clip and tip-up clip

34090000 ASC 1

Black, similar to RAL 9005



Front panels BOS 500-503, ABS

34955006 Frontplatte infrarotdurch

For BOS 500/501/502/503

34055000 Frontplatte Alu

For BOS 500/501/502/503



Screws (SHR) and distance bolts (DIBLZ) for mounting bosses in plastic enclosures

59006190 SHR Z KA25x6

SD = 2.5 / ND = 2.0 / KD = 4.4

Membrane keypad for BOS 500-502, with 12 keys

70345012* FT 50012 D