

SAFETY ORGANIZATION(S).  
 THIS FILTER HAS BEEN FORMALLY RECOGNIZED, CERTIFIED OR APPROVED BY THE LISTED AGENCY. THEREFORE, ALL TEST/REQUIREMENTS SPECIFIED IN THE LATEST REVISION OF THE FOLLOWING AGENCY STANDARDS HAVE BEEN MET.

UL 1283  
 CSA 22.2 NO. 0, 0.4, 8

OPERATING SPECIFICATIONS.

LINE VOLTAGE/CURRENT, 45 OR 60 AMP., 250VAC PHASE/NEUTRAL-GND  
 45 OR 60 AMP., 440VAC PHASE/PHASE  
 50-60HZ  
 LINE FREQUENCY, 40°C  
 MAX. CASE RISE RATED CURRENT, 1.4mA @ 120V 60HZ  
 MAX. LEAKAGE CURRENT, EACH 3.4mA @ 250V 50HZ  
 LINE TO GROUND  
 OPERATING AMBIENT TEMP. RANGE, -10°C TO +40°C @ RATED CURRENT, I<sub>r</sub>  
 IN AN AMBIENT, T<sub>a</sub>, HIGHER THAN 40°C, THE MAXIMUM OPERATING CURRENT, I<sub>o</sub>, IS AS FOLLOWS:  

$$I_o = I_r \sqrt{\frac{55 - T_a}{45}}$$

RELIABILITY SPECIFICATIONS.

STORAGE TEMPERATURE, -25°C TO +85°C  
 HUMIDITY, 21 DAYS @ 40°C 95% RH

TEST SPECIFICATIONS.

INDUCTANCE, 45A = 1.1mH NOMINAL 60A = 0.74mH NOMINAL  
 GROUND CHOKES, 45A = .267mH NOMINAL 60A = .242mH NOMINAL  
 CAPACITANCE, (MEASURED @ 1 KHZ, 0.25 VAC MAX., 25°C ±1°C)  
 PHASE/NEUTRAL TO GROUND, .026µF ±20%  
 PHASE TO NEUTRAL, 2.0µF ±20%  
 DISCHARGE RESISTOR, 165K OHMS  
 LINE/GROUND AND LINE/LINE, 6000 Oh (MIN) AT 100 VDC  
 INSULATION RESISTANCE (W/O DISCHARGE RESISTOR) 20°C AND 50% RH  
RECOMMENDED RECEIVING INSPECTION HIPOT.  
 PHASE/NEUTRAL TO GROUND, 1500 VAC FOR 1 MINUTE  
 PHASE TO NEUTRAL, 1450 VDC FOR 1 MINUTE

FILTER APPROVAL.  
 THE BEST WAY TO SELECT AND QUALIFY A FILTER IS FOR YOUR ENGINEERING TO TEST THE UNIT IN YOUR EQUIPMENT.

TOLERANCE EXCEPT AS NOTED

DECIMAL, .XXX .XX .X ANGLES ±1°  
 ENGLISH, ±.030  
 METRIC, ±

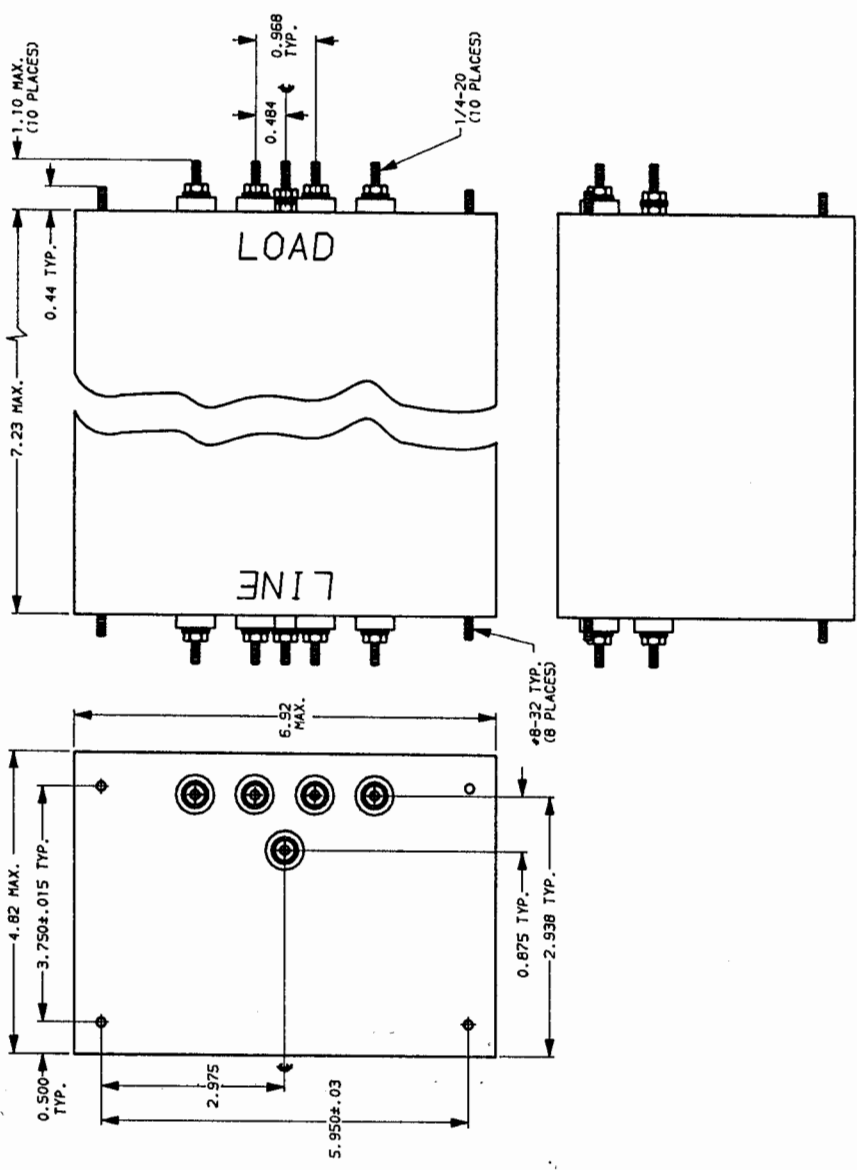
MATERIAL:  
 AS SUPPLIED

FINISH:

SCALE NTS 4-25-89 DRG. NO.  
 DATE 4-25-89  
 PREPARED BY LJD CFW  
 REV. 2



**POWER LINE FILTER**

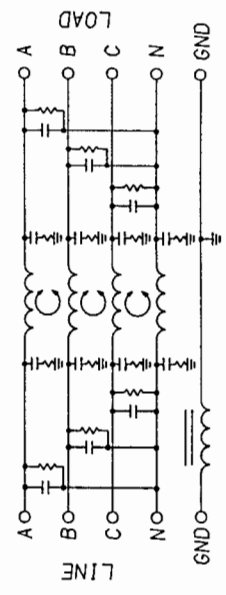


NOTE, COMMON MODE A-B-C & N SHORTED TOGETHER.  
 DIFF. MODE MEASURED N TO A-B-C SHORTED TOGETHER.

50n - 50n (MINIMUM) INSERTION LOSS		FREQUENCY		COMMON		DIFF.	
dB	Hz	dB	Hz	dB	Hz	dB	Hz
0.05	15	0.15	5	1.0	5.0	10.0	30.0
	25		49		49		58
	45		58		58		65
	54		65		65		72
	65		72		72		80
	80		80		80		90

This document is proprietary to CORCOM INC. and is not to be reproduced nor used for manufacturing purposes except on CORCOM's order or prior written consent.

NOTES:  
 1.) LINE SIDE HAS INSULATED GROUND TERMINAL.



# Mouser Electronics

Authorized Distributor

Click to View Pricing, Inventory, Delivery & Lifecycle Information:

[TE Connectivity:](#)

[60AYP6C](#)