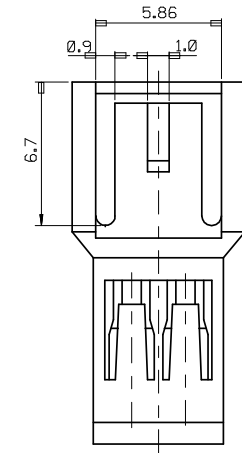


NOTES

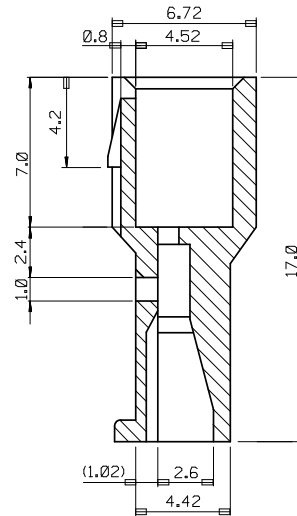
1. MATERIAL : SEE TABLE
2. USED WITH TERMINAL : 35053-9002
3. MATED WITH FEMALE HOUSING : 35155-***0

LEGEND

35184 - ** * *
 COLOR : 0 --- NATURAL
 2 --- RED
 0 : PA66 / 9 : PBT/PC
 CKT NO.



2.3 CKT ONLY



SECTION E-E

| | | | | | |
|------|-------|-------|-------------|------------|-----|
| 35.0 | 38.36 | 40.56 | 3518415** | 35184-15 * | 15 |
| 32.5 | 35.86 | 38.06 | 3518414** | -14** | 14 |
| 30.0 | 33.36 | 35.56 | 3518413** | -13** | 13 |
| 27.5 | 30.86 | 33.06 | 3518412** | -12** | 12 |
| 25.0 | 28.36 | 30.56 | 3518411** | -11** | 11 |
| 22.5 | 25.86 | 28.06 | 3518410** | -10** | 10 |
| 20.0 | 23.36 | 25.56 | 3518409** | -09** | 9 |
| 17.5 | 20.86 | 23.06 | 3518408** | -08** | 8 |
| 15.0 | 18.36 | 20.56 | 3518407** | -07** | 7 |
| 12.5 | 15.86 | 18.06 | 3518406** | -06** | 6 |
| 10.0 | 13.36 | 15.56 | 3518405** | -05** | 5 |
| 7.5 | 10.86 | 13.06 | 3518404** | -04** | 4 |
| 5.0 | 8.36 | 10.56 | 3518403** | -03** | 3 |
| 2.5 | 5.86 | 8.06 | 3518402** | 35184-02** | 2 |
| C | B | (A) | MATERIAL NO | ENG.NO | CKT |

| | | | | | | | | | |
|---|--------------------------------------|---|---------|--|---|--------------------------------|-------------------------------|-------------------------------|--|
| REVISED EC NO: KOR2008-0103 DRWN:SKHAN01 2007/12/14 CHKD:WY.YANG 2007/12/21 APPR:YUNS IKK IM 2007/12/21 | QUALITY SYMBOLS = 0 = 0 | GENERAL TOLERANCES (UNLESS SPECIFIED) | | DIMENSION STYLE MM ONLY | | SCALE 4:1 | DESIGN UNITS METRIC | THIRD ANGLE PROJECTION | |
| | | 4 PLACES ± --- ± --- 3 PLACES ± --- ± --- 2 PLACES ± --- ± --- 1 PLACE ± 0.3 ± --- | mm INCH | DRAWN BY DATE SK.HAN 2007/12/13 | TITLE 2.5 PITCH W/W CONN. MALE HOUSING | | | | |
| | | ANGULAR ± 2 ° | | CHECKED BY DATE WY.YANG 2007/12/13 | MOLEX INCORPORATED | | | | |
| | | DRAFT WHERE APPLICABLE MUST REMAIN WITHIN DIMENSIONS | | APPROVED BY DATE EH. JUNG 2007/12/13 | MATERIAL NO. SEE TABLE | DOCUMENT NO. SD-35184-***0* | SHEET NO. 1 OF 1 | | |
| THIS DRAWING CONTAINS INFORMATION THAT IS PROPRIETARY TO MOLEX INCORPORATED AND SHOULD NOT BE USED WITHOUT WRITTEN PERMISSION | | | | | | | | | |