

# Spanners



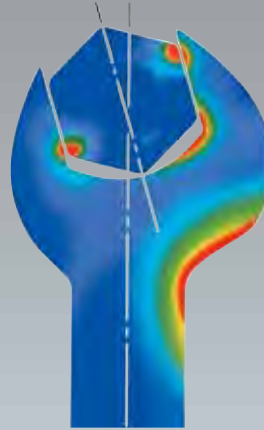
# STAHLWILLE spanners

## Conventional spanners

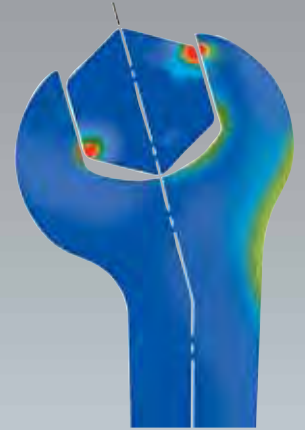
- When force is applied to a spanner, the greatest force acts on the joint between the jaw and the shaft. Standard-quality open-jaw spanners do not take this fact into consideration. In the context of normal hard work, this can lead to the tool breaking, causing considerable personal injury.

## STAHLWILLE spanners

- To reduce the danger of breakage, we add more material where the greatest loads are to be found and take it away from the places that are not under such stress. In this way, we are able to manufacture extremely sturdy, slim and light tools which also facilitate working in confined spaces due to their compact designs.



Load zones in standard-quality spanners



Load zones in spanners by STAHLWILLE

## Extremely resilient, remarkably durable

- Drop-forged from high-grade special steels
- Optimum hardening in continuous furnaces with no scale build-up or skin decarburisation
- Gentle quenching in oil

## Concentrated force

- More resilient than any screw
- Rings are thinner than conventional rings, facilitating work in confined spaces



## Light and easy to handle

- High resistance to bending and low weight thanks to STAHLWILLE's typical double-T profile
- Snug-fitting, skin-friendly surfaces thanks to STAHLWILLE's rounded finish

Open-jaw spanners in oil



Absolutely resistant to bending thanks to the double-T profile

# Strong, extremely tough and durable

## Quality assured

STAHLWILLE's Quality Assurance System was awarded an internationally recognised certificate in accordance with DIN ISO 9001 by the DQS (German Association for the Certification of Quality Assurance Systems).

This one – and the next one:  
tailored to fit

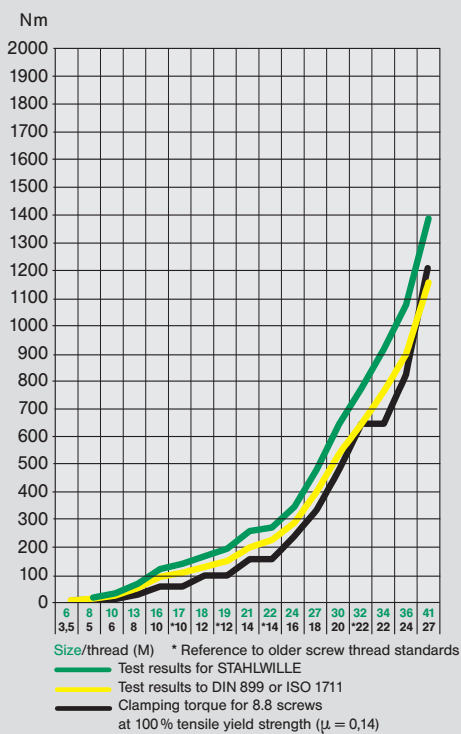


This one – and the next one:  
perfect chrome plating



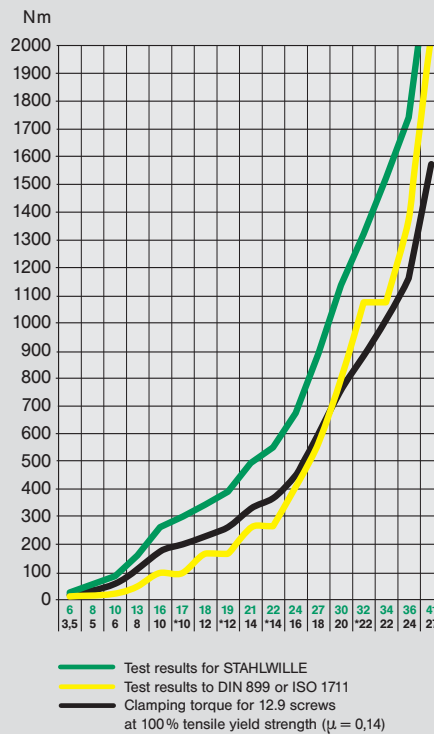
## Guaranteed test results

### STAHLWILLE combination spanners No 13 (open-jaw)



## Guaranteed test results

### STAHLWILLE combination spanners No 13 (ring)



**STAHLWILLE No 8 striking face double hex box-spanners are tougher, thinner and higher.**

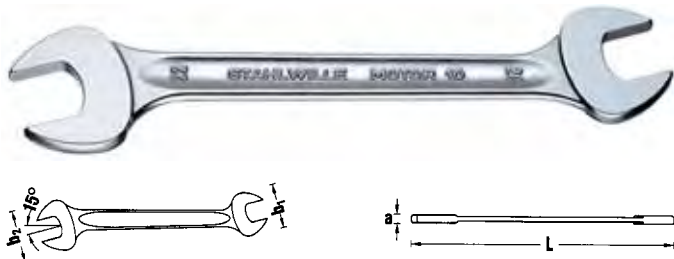
- Tougher than any screw thanks to the forged double hex.
- Thinner than conventional rings – facilitating work in confined spaces.
- Higher than standard nuts – prevents the spanner jamming on the nut.



# Spanners

## 10 Double open ended spanners

DIN 3110, ISO 10102 (metric sizes),  
Chrome Alloy Steel, chrome plated.



Code	mm	L mm	b <sub>1</sub> mm	b <sub>2</sub> mm	a mm	ΔΔ g	
40030405	4 x 5	100	12.5	14	3.4	11	10
40035507	5.5 x 7	120	14.8	17	3.7	19	10
40030607	6 x 7	120	15.5	17	3.7	17	10
40030708	7 x 8	140	17	18	4.0	25	10
40030809	8 x 9	140	18	21	4.0	21	10
40030810	8 x 10	140	18	23	4.5	33	10
40031011	10 x 11	155	23	26	4.8	40	10
40031012	10 x 12	170	23	28	5.3	51	10
40031013	10 x 13	170	23	30	5.3	57	10
40031113	11 x 13	170	26	30	5.3	55	10
40031213	12 x 13	170	28	30	5.3	64	10
40031214	12 x 14	170	28	32	5.3	63	10
40031314	13 x 14	190	30	32	5.3	70	10
40031315	13 x 15	190	30	35	5.3	73	10
40031317	13 x 17	205	30	38	5.8	92	10
40031415	14 x 15	190	32	35	5.3	81	10
40031417	14 x 17	205	32	38	5.8	99	10
40031617	16 x 17	205	36	38	5.8	100	10
40031618	16 x 18	220	36	40	6.7	125	10
40031719	17 x 19	220	38	42	6.7	131	10
40031819	18 x 19	220	40	42.5	6.7	147	10
40031821	18 x 21	235	40	47	7.3	170	10
40031922	19 x 22	235	42	49	7.3	179	10
40032022	20 x 22	235	45	49	7.3	185	10
40032123	21 x 23	250	47	51	7.8	225	5
40032124	21 x 24	250	47	53	7.8	215	5
40032224	22 x 24	250	49	53	7.8	232	5
40032426	24 x 26	270	53	57.5	8.3	293	5
40032427	24 x 27	280	53	60	8.3	299	5
40032528	25 x 28	285	55	62	8.3	309	5
40032730	27 x 30	300	60	66	9.4	412	5
40032732	27 x 32	300	60	70	9.4	418	5
40033032	30 x 32	300	66	70	9.4	451	5
40033034	30 x 34	300	66	75	9.4	480	5
40033236	32 x 36	325	70	80	10	546	5
40033436	34 x 36	325	75	80	10	619	1
40033641	36 x 41	375	80	88	11	800	1
40034146	41 x 46	425	88	94.5	12	1030	1

## 10a Double open ended spanners

Code	"	L mm	b <sub>1</sub> mm	b <sub>2</sub> mm	a mm	ΔΔ g	
40431620	1/4 x 5/16	140	16	18	4	21	10
40432024	5/16 x 3/8	140	18	23	4.5	34	10
40432428	3/8 x 7/16	155	23	26	4.8	48	10
40432832	7/16 x 1/2	170	26	30	5.3	58	10
40433234	1/2 x 9/16	190	30	32	5.3	73	10
40433436	9/16 x 5/8	205	32	36	5.8	96	10
40433538	19/32 x 11/16	205	35	40	5.8	105	10
40433638	5/8 x 11/16	205	36	40	5.8	101	10
40433640	5/8 x 3/4	220	36	42	6.7	135	10
40433840	11/16 x 3/4	220	40	42	6.7	135	10
40433842	11/16 x 13/16	235	40	47	7.3	167	10
40434044	3/4 x 7/8	235	42	49	7.3	177	10
40434142	25/32 x 13/16	235	45	47	7.3	190	10
40434446	7/8 x 15/16	250	49	53	7.8	235	10
40434648	15/16 x 1	270	53	55	8.3	303	5
40435258	1 1/8 x 1 5/16	300	64	75	9.4	502	5

## Sets: Double open ended spanners



Code	No	Content mm/"	ΔΔ g
96400305	10/8	6 x 7; 8 x 9; 10 x 11; 12 x 13; 14 x 15; 16 x 17; 18 x 19; 20 x 22	745
96400314	10/9	6 x 7; 8 x 9; 10 x 11; 12 x 13; 14 x 15; 16 x 17; 18 x 19; 20 x 22; 21 x 24	945
96400307	10/10	6 x 7; 8 x 9; 10 x 11; 12 x 13; 14 x 15; 16 x 17; 18 x 19; 20 x 22; 24 x 27; 30 x 32	1540
96400306	10/12	6 x 7; 8 x 9; 10 x 11; 12 x 13; 14 x 15; 16 x 17; 18 x 19; 20 x 22; 21 x 23; 24 x 27; 25 x 28; 30 x 32	2125
96404306	10a/7	1/4 x 5/16; 3/8 x 7/16; 1/2 x 9/16; 5/8 x 3/4; 11/16 x 13/16; 7/8 x 15/16; 1 1/8 x 1 5/16	1242
96404307	10a/11	1/4 x 5/16; 3/8 x 7/16; 1/2 x 9/16; 5/8 x 3/4; 11/16 x 13/16; 3/4 x 7/8; 25/32 x 13/16; 7/8 x 15/16; 1 1/8 x 1 5/16	1870

Standard packing: clear view wallet.



**ES 10/10, 5.5x7-22x24 mm**



175 x 350 x 60 mm, 10 pieces

Code	ΔΔ	g
<b>96838130</b>		1100
<b>No 10</b>	sizes 5.5 x 7; 8 x 10; 10 x 12; 11 x 13; 12 x 14; 14 x 17; 17 x 19; 18 x 21; 19 x 22; 22 x 24 mm	
<b>83812033</b> Empty tray		106

**ES 10/10, 6x7-30x32 mm**



175 x 350 x 70 mm, 10 pieces

Code	ΔΔ	g
<b>96838126</b>		1515
<b>No 10</b>	sizes 6 x 7; 8 x 9; 10 x 11; 12 x 13; 14 x 15; 16 x 17; 18 x 19; 20 x 22; 24 x 27; 30 x 32 mm	
<b>83812022</b> Empty tray		112

**TCS 10/10, 6x7-30x32 mm**



350 x 350 x 30 mm, 10 pieces

Code	ΔΔ	g
<b>96838182</b>		1550
<b>No 10</b>	sizes 6 x 7; 8 x 9; 10 x 11; 12 x 13; 14 x 15; 16 x 17; 18 x 19; 20 x 22; 24 x 27; 30 x 32 mm	

**TCS 10/10, 6x7-30x32 mm MF**



175 x 350 x 75 mm, 10 pieces

Code	ΔΔ	g
<b>96830353</b>		1437
<b>No 10</b>	sizes 6 x 7; 8 x 9; 10 x 11; 12 x 13; 14 x 15; 16 x 17; 18 x 21; 19 x 22; 24 x 27; 30 x 32 mm	

**TCS 10/10, 6x7-24x27 mm**



175 x 350 x 66 mm, 10 pieces

Code	ΔΔ	g
<b>96838187</b>		1287
<b>No 10</b>	sizes 6 x 7; 8 x 9; 10 x 11; 12 x 13; 14 x 15; 16 x 17; 18 x 19; 20 x 22; 21 x 24; 24 x 27 mm	

**TCS 10/10, 6x7-24x27 mm MF**



175 x 350 x 66 mm, 10 pieces

Code	ΔΔ	g
<b>96830358</b>		1320
<b>No 10</b>	sizes 6 x 7; 8 x 9; 10 x 11; 12 x 13; 14 x 15; 16 x 17; 18 x 19; 20 x 22; 21 x 24; 24 x 27 mm	

**TCS 10+13+24/30**



530 x 350 x 75 mm, 30 pieces

Code	ΔΔ	g
<b>96830605</b>		3724
<b>No 10</b>	sizes 6 x 7; 8 x 9; 10 x 11; 12 x 13; 14 x 15; 16 x 17; 18 x 19; 20 x 22; 21 x 24 mm	
<b>No 13</b>	sizes 6; 7; 8; 9; 10; 11; 12; 13; 14; 15; 16; 17; 18; 19; 21; 22; 24; 27; 30; 32 mm	
<b>No 24</b>	size 10 x 11 mm	

# Spanners

## TCS 10a/9



175 x 350 x 70 mm, 9 pieces

Code	g
<b>96838779</b>	<b>1555</b>

<b>No 10a</b>	sizes 1/4 x 5/16; 3/8 x 7/16; 1/2 x 9/16; 19/32 x 11/16; 5/8 x 3/4; 3/4 x 7/8; 25/32 x 13/16; 15/16 x 1; 1 1/8 x 1 5/16"
---------------	--

## Plastic-wallets for sets of spanners

Code	wallet No	for set No	g
<b>83400306</b>	<b>010/12</b>	10/12*, 10a/11*	276
<b>83404601</b>	<b>012/10</b>	12/10 Pc	41
<b>83400601</b>	<b>012/15</b>	12/15 Pc, 12a/13 Pc	68
<b>83410704</b>	<b>023/8</b>	23/8*	123

\* Plastic-wallets must be ordered separately!

## 013/6KH\* Clip holder for sets of spanners



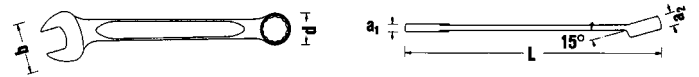
Code	for set No	g	
<b>83400806</b>	13/6	40	1

\* to be discontinued

## 13 Combination spanners OPEN-BOX




DIN 3113 form A/ISO 7738 form A (metric sizes),  
Chrome Alloy Steel, chrome plated.



Code	mm	L mm	b mm	d mm	a <sub>1</sub> mm	a <sub>2</sub> mm	g	
40085500	5.5	100	14.8	9.2	3.5	5.8	13	10
40080606	6	105	15.5	9.9	3.6	6	15	10
40080707	7	110	17	11.3	3.9	6	20	10
40080808	8	115	18	12.4	4.2	7	21	10
40080909	9	120	21	13.4	4.5	7	27	10
40081010	10	125	23	14.8	4.8	7	35	10
40081111	11	135	26	16.4	4.8	8	43	10
40081212	12	140	28	17.8	5.3	8.5	46	10
40081313	13	160	30	19.1	5.3	8.5	57	10
40081414	14	165	32	20.6	5.3	8.5	68	10
40081515	15	170	35	21.9	5.3	8.5	73	10
40081616	16	180	36	23.2	5.8	10	89	10
40081717	17	190	38	24.6	5.8	10	99	10
40081818	18	200	40	26	6.7	11.5	126	10
40081919	19	230	42	27.5	6.7	11.5	142	10
40082020	20	230	45	29	7	13	176	10
40082121	21	260	47	30.3	7.3	13	216	10
40082222	22	260	49	31.8	7.3	13	220	10
40082323	23	280	53	33.5	7.8	14	251	5
40082424	24	280	53	34.9	7.8	14	254	5
40082525	25	300	55	36.3	8.4	14.5	281	5
40082626	26	300	57.5	37.8	8.4	14.5	315	5
40082727	27	300	60	39.2	8.4	14.5	345	5
40082828	28	320	62	40.6	8.4	14.5	368	5
40082929	29	330	64	41.9	8.9	16	420	5
40083030	30	330	66	43.2	8.9	16	404	5
40083232	32	360	70	45.8	9.4	16.5	484	5
40083434	34	450	80	48	9.4	17	683	1
40083636	36	460	88	50.8	10	18	787	1
40083838	38	480	87	53.6	11	19	915	1
40084141	41	480	88	57.8	11	19	1055	1
40084646	46	500	94.5	65.2	13	20	1352	1
40085050	50	530	103	73	14	21	1700	1
40085555	55	560	114	81	15	22	2193	1
40086060	60	590	125	89.8	16	24	2825	1

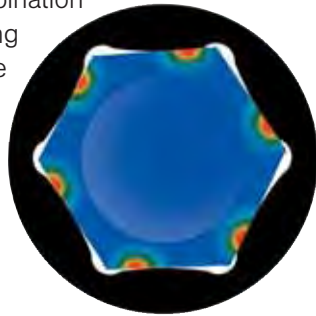


**13a** Combination spanners OPEN-BOX

Code	Ø "	L mm	b mm	d mm	a <sub>1</sub> mm	a <sub>2</sub> mm	Δ⊗ g	
40 48 12 12	3/16	95	14	9.8	3	3.2	10	5
40 48 13 13	13/64	95	14	9.8	3	3.2	10	5
40 48 14 14	7/32	95	14	9.8	3	3.2	10	5
40 48 15 15	15/64	95	14	9.8	3	3.2	9	5
40 48 16 16	1/4	105	15.5	10.2	3.6	6	14	10
40 48 18 18	9/32	110	17	11.3	3.9	6	17	10
40 48 20 20	5/16	115	18	12.4	4.2	7	20	10
40 48 22 22	11/32	120	21	13.4	4.5	7	26	10
40 48 24 24	3/8	125	23	14.3	4.8	7	32	10
40 48 28 28	7/16	135	26	16.4	4.8	8	41	10
40 48 32 32	1/2	160	30	18.8	5.3	8.5	57	10
40 48 34 34	9/16	165	32	20.6	5.3	8.5	68	10
40 48 35 35	19/32	170	35	21.9	5.3	8.5	74	10
40 48 36 36	5/8	180	37	23.2	5.8	10	88	10
40 48 38 38	11/16	200	40	25.3	6.7	11.5	116	10
40 48 40 40	3/4	230	42	27.5	6.7	11.5	144	10
40 48 41 41	25/32	235	45	29	7	13	175	5
40 48 42 42	13/16	260	47	30	7.3	13	204	5
40 48 44 44	7/8	260	49	31.8	7.3	13	217	5
40 48 46 46	15/16	280	53	34.9	7.8	14	255	5
40 48 48 48	1	300	55	37.2	8.4	14.5	286	5
40 48 50 50	1 1/16	300	60	39.2	8.4	14.5	327	5
40 48 52 52	1 1/8	330	64	41.4	8.9	16	380	5
40 48 54 54	1 3/16	335	66	43.2	8.9	16.5	398	1
40 48 56 56	1 1/4	360	70	45.8	9.4	16.5	504	5
40 48 58 58	1 5/16	450	74	47	9.6	17	617	1
40 48 60 60	1 3/8	460	80	49.3	10	18	796	1
40 48 62 62	1 7/16	460	80	51.4	10	18	770	1
40 48 64 64	1 1/2	480	87	53.6	11	19	961	1
40 48 66 66	1 5/8	480	88	58	11	19	1021	1
40 48 69 69	1 13/16	500	94.5	65.3	13	20	1343	1
40 48 70 70	1 7/8	530	103	68.4	14	21	1779	1
40 48 72 72	2	530	103	74	14	21	1817	1

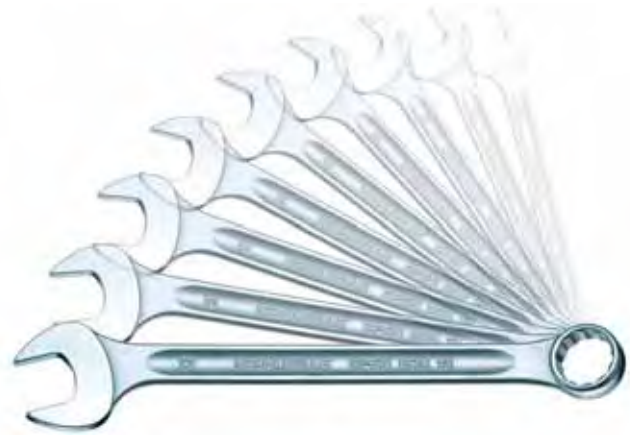
**STAHLWILLE AS-Drive**

The rings of STAHLWILLE combination spanners and double ended ring spanners are equipped with the AS-Drive\* profile: this permits high transmission of forces to the lands of nuts and bolts without damaging them. No longer will you have to worry about stripping the corners off nuts and bolts.



\*Anti-Slip-Drive

**Sets: Combination spanners OPEN-BOX**



Code	No	Content mm/"	Δ⊗ g
96 40 08 13	13/6 <sup>3)</sup>	7; 8; 10; 13; 17; 19	430
96 40 08 01	13/9	9; 10; 11; 12; 13; 14; 17; 19; 22	758
96 40 08 08	13/10KT <sup>1)</sup>	8; 9; 10; 11; 12; 13; 14; 15; 17; 19	746
96 40 08 02	13/11	8; 9; 10; 11; 12; 13; 14; 15; 17; 19; 22	915
96 40 08 03	13/15	6; 7; 8; 9; 10; 11; 12; 13; 17; 19; 22; 24; 27; 30; 32	2236
96 40 08 16	13/16 <sup>2)</sup>	7; 8; 9; 10; 11; 12; 13; 14; 15; 16; 17; 18; 19; 21; 22; 24	1620
96 40 08 04	13/17	6; 7; 8; 9; 10; 11; 12; 13; 14; 15; 16; 17; 18; 19; 20; 21; 22	1493
96 40 08 05	13/26 <sup>2)</sup>	6; 7; 8; 9; 10; 11; 12; 13; 14; 15; 16; 17; 18; 19; 20; 21; 22; 23; 24; 25; 26; 27; 28; 29; 30; 32	4705
96 40 48 03	13a/8	7/16; 1/2; 9/16; 5/8; 11/16; 3/4; 13/16; 7/8	959
96 40 48 12	13a/10KT <sup>1)</sup>	1/4; 9/16; 11/32; 3/8; 7/16; 1/2; 9/16; 5/8; 11/16; 3/4	750
96 40 48 04	13a/20 <sup>2)</sup>	1/4; 9/32; 5/16; 11/32; 3/8; 7/16; 1/2; 9/16; 19/32; 5/8; 11/16; 3/4; 25/32; 13/16; 7/8; 15/16; 1; 1 1/16; 1 1/8; 1 1/4	3210


Standard packing: clear view wallet.  
(Coloured plastic-wallets: page 70)

- <sup>1)</sup> carton with clear view cover
- <sup>2)</sup> packed in carton
- <sup>3)</sup> in convenient clip holder

**ES 13/10, 6–15 mm**



175 x 350 x 40 mm, 10 pieces

Code	g
96 83 81 27	525
 No 13	sizes 6; 7; 8; 9; 10; 11; 12; 13; 14; 15 mm
83 81 20 23	Empty tray 105