

EAO – Your Expert Partner for Human Machine Interfaces

51-414.036D - Keylock switch 2 positions round - Actuator

51-414.036D - Keylock switch 2 positions round - Actuator



Attention: The preview is based on a sample product. This can differ from your current configuration.

Attribute

| | |
|---------------------|-----------------------|
| Design | raised |
| Front dimension | Ø 18 mm |
| Front form | round |
| IP front protection | IP65 |
| Mounting cut-out | Ø 16 mm |
| Contacts | 2 NO |
| Contact material | Gold |
| Rotary positions | 2 |
| Switching action | Rest (a) - Maintained |
| Switching angle | 90° right |
| Switching current | 0.1 A |
| Switching system | Low-level element |
| Switching voltage | 42 V |
| Terminal | Universal terminal |
| Weight | 0.016 kg |
| Switching rating | 42 V @ 0,1 A |

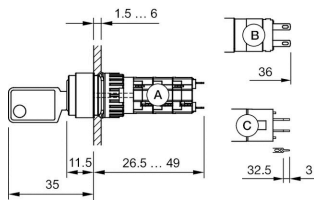
Function

Keylock switch

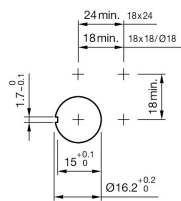
EAO – Your Expert Partner for Human Machine Interfaces

51-414.036D - Keylock switch 2 positions round - Actuator

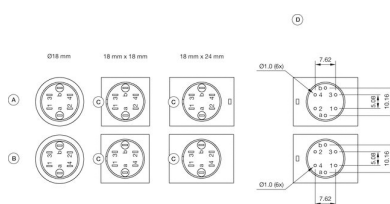
Dimensions



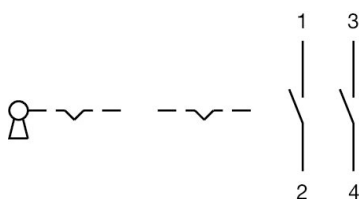
Mounting cut-outs



Component layouts



Wiring diagrams



Additional information

Standard lock: DOM 311

Front plastic black

a = Key remove

Contacts: NC = Normally closed, NO = Normally open

Standard lock: DOM 311

Contacts: NO = Normally open

a = Key remove