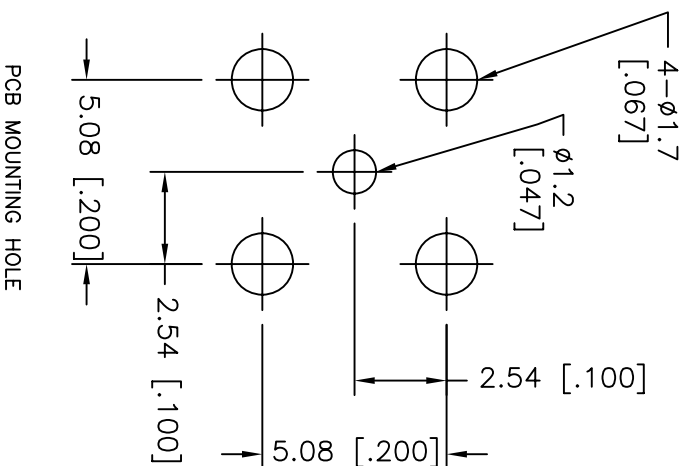
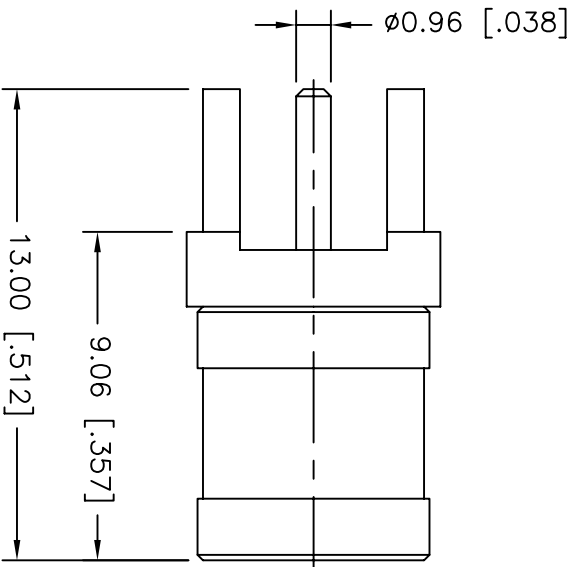
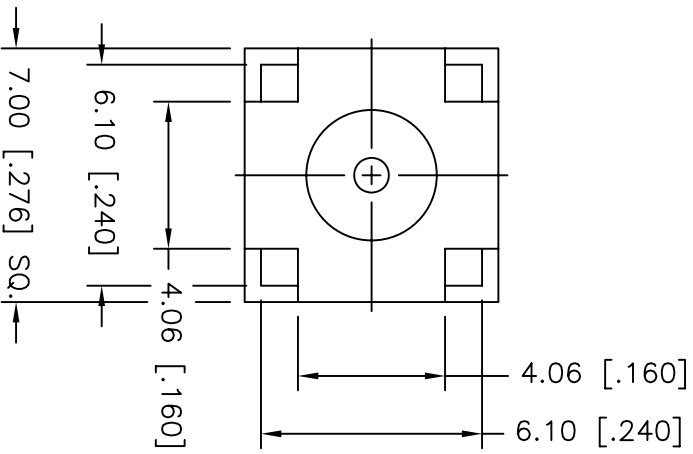


REV.	DATE	ECR NO.	DESCRIPTION
NC	10/29/96	XXXXXX	INITIAL RELEASE
A	05/29/07	XXXXXX	UPDATE DRAWING FORMAT
B	12/06/11	2264	ADD NOTES AND ADD PCB MOUNTING HOLE



1. FREQUENCY RANGE: DC-4 GHz
2. VSWR: 1.3 MAX.
3. DIELECTRIC WITHSTANDING VOLTAGE: 1000 VRMS, MIN.

Amphenol Connex

STRAIGHT SMB PLUG FOR P.C. BOARD

PART NO. 142134

DESCRIPTION	MATERIAL	FINISH	QTY
5 RETAINER RING	BERYLLIUM COPPER	NATURAL	1
4 CONTACT PIN	BERYLLIUM COPPER	GOLD	1
3 INSULATOR	PTFE	NATURAL	1
2 BODY	BRASS	GOLD	1
1 SHELL	BRASS	GOLD	1

UNLESS OTHERWISE SPECIFIED, DIMENSIONS ARE IN INCHES AND FOR CUSTOMER REFERENCE ONLY.
 UNLESS OTHERWISE SPECIFIED, DIMENSIONS ARE IN MILLIMETERS AND FOR CUSTOMER REFERENCE ONLY.
 UNLESS OTHERWISE SPECIFIED, DIMENSIONS ARE IN MILLIMETERS AND FOR CUSTOMER REFERENCE ONLY.
 TOLERANCES FOR MILLIMETERS ARE:
 0.5 - 8mm ± 0.20mm
 8 - 30mm ± 0.40mm
 30 - 120mm ± 0.50mm
 UNLESS OTHERWISE SPECIFIED, DIMENSIONS ARE IN INCHES AND FOR CUSTOMER REFERENCE ONLY.
 TOLERANCES FOR INCHES ARE:
 .020 - .315 = ± 0.007"
 .315 - 1.180 = ± 0.015"
 1.180 - 4.724 = ± 0.020"

APPROVALS	DATE
DRAWN M.ZHANG	12/06/11
CHECKED	
ISSUED	
SHEET 1 OF 1	

APPROVALS	DATE
DRAWN M.ZHANG	12/06/11
CHECKED	
ISSUED	
SHEET 1 OF 1	

DESCRIPTION	MATERIAL	FINISH	QTY
5 RETAINER RING	BERYLLIUM COPPER	NATURAL	1
4 CONTACT PIN	BERYLLIUM COPPER	GOLD	1
3 INSULATOR	PTFE	NATURAL	1
2 BODY	BRASS	GOLD	1
1 SHELL	BRASS	GOLD	1