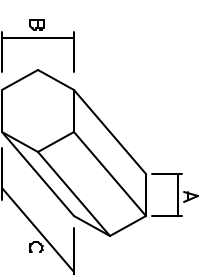
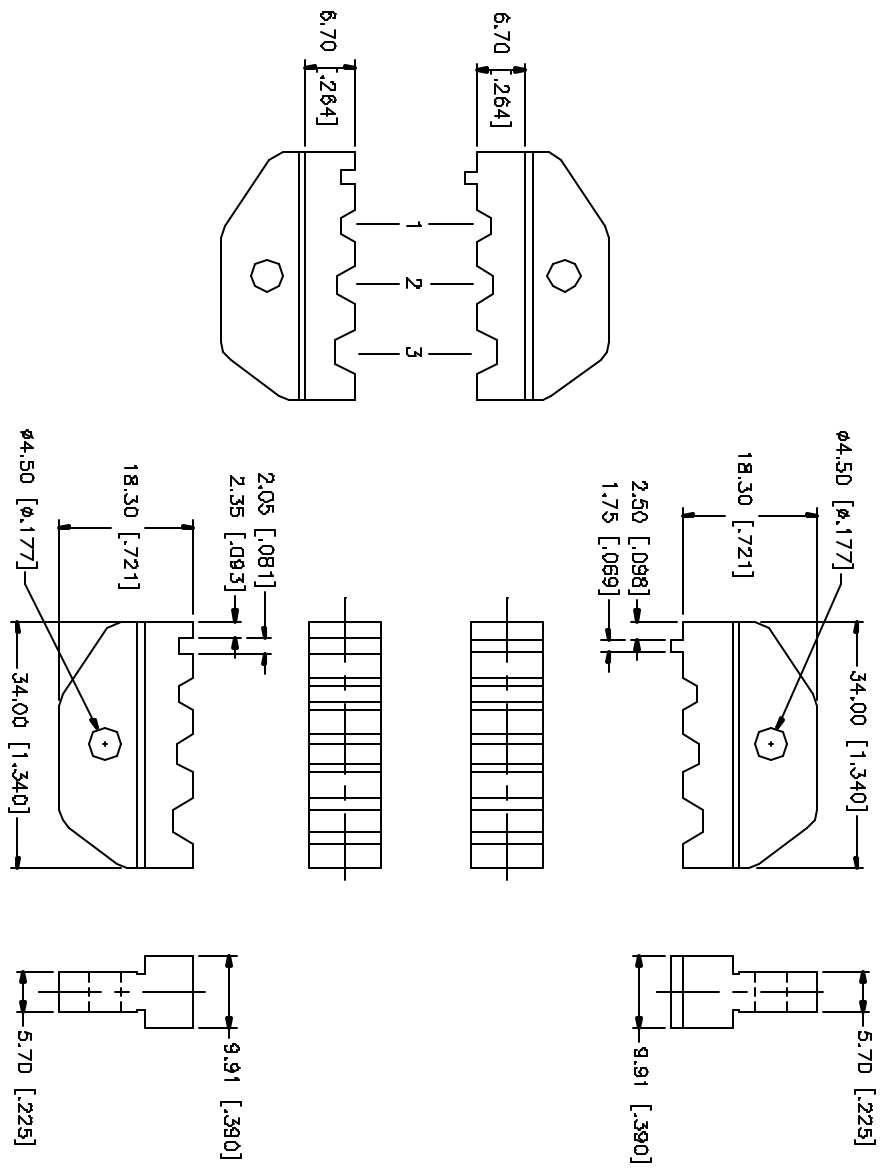


REV.	DATE	DESCRIPTION
A	08/31/04	UPDATE DRAWING FORMAT



	A	B	C
1	2.21 [.087]	3.83 [.151]	9.91 [.390]
2	2.61 [.103]	4.52 [.178]	9.91 [.390]
3	3.12 [.123]	5.41 [.213]	9.91 [.390]
4			



REV.	DATE	DESCRIPTION
8		
7		
6		
5		
4		
3		
2		
1		

DESCRIPTION	MATERIAL	FINISH	QTY
DIE BODY	CAST STEEL	BLK. OXIDE	

UNLESS OTHERWISE SPECIFIED DIMENSIONS ARE IN MILLIMETERS, DIMENSIONS IN [ ] ARE IN INCHES AND FOR QUANTITY REFERENCES ONLY. DIMENSIONS FOR MILLIMETER ARE:
0.5 - .001mm ± 0.20mm
3D - .30mm ± 0.40mm
3D - .120mm ± 0.50mm
UNLESS OTHERWISE SPECIFIED DIMENSIONS FOR INCHES ARE:
.020 - .315 ± 0.007"
.315 - 1.180 ± 0.013"
1.180 - 4.724 ± 0.025"

APPROVALS	DATE
DRAWN G.R.S.	08/31/04
CHECKED	
ISSUED	
SHEET 1 OF 1	

PART NO.	DESCRIPTION
47-20008	CRIMP DIE SET

DWG. NO.	REV.	SIZE	SCALE
47-20008.DWG	A	A	NA

# Mouser Electronics

Authorized Distributor

Click to View Pricing, Inventory, Delivery & Lifecycle Information:

[Amphenol:](#)

[47-20008](#)