

THIS DOCUMENT CONTAINS PROPRIETARY DATA OF POLARIS INDUSTRIAL ENTERPRISES, INC. NO DISCLOSURE, REPRODUCTION, OR USE OF ANY PART THEREOF MAY BE MADE EXCEPT BY WRITTEN PERMISSION.

REV.	BY	DATE	APPRVD.
G	AT	12-11-01	

P/N **SP22G**
 ADDED MOUNTING PLATE

SPECIFICATIONS

ELECTRICAL

RESISTANCE RANGE-----500,1K,2K,5K,10K,20K,50K,100K
 RESISTANCE TOLERANCE-----±10%
 LINEARITY INDEPENDENT-----±1.0%
 POWER RATING-----1.0 WATTS
 ELECTRICAL ANGLE-----340°±4°
 END VOLTAGE-----0.2% MAX
 RESOLUTION-----ESSENTIALLY INFINITE
 OUTPUT SMOOTHNESS-----BELOW 0.1% AGAINST INPUT VOLTAGE
 CONTACT RESISTANCE VARIATION-----BELOW 2%
 INSULATION RESISTANCE-----1000MEGΩHMS @ 500VDC MIN.
 DIELECTRIC STRENGTH-----500 VAC

MECHANICAL

MECHANICAL ANGLE-----CONTINUOUS
 ROTATIONAL TORQUE-----0.7 OZ.IN.
 SHAFT END PLAY-----.006MAX.
 TEMPERATURE COEFFICIENT-----±400 PPM/°C
 WEIGHT, APPROX.-----1.1 OZ.
 ROTATIONAL LIFE-----10,000,000 TURNS

ENVIRONMENTAL

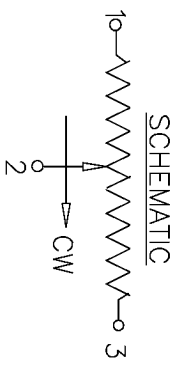
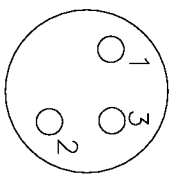
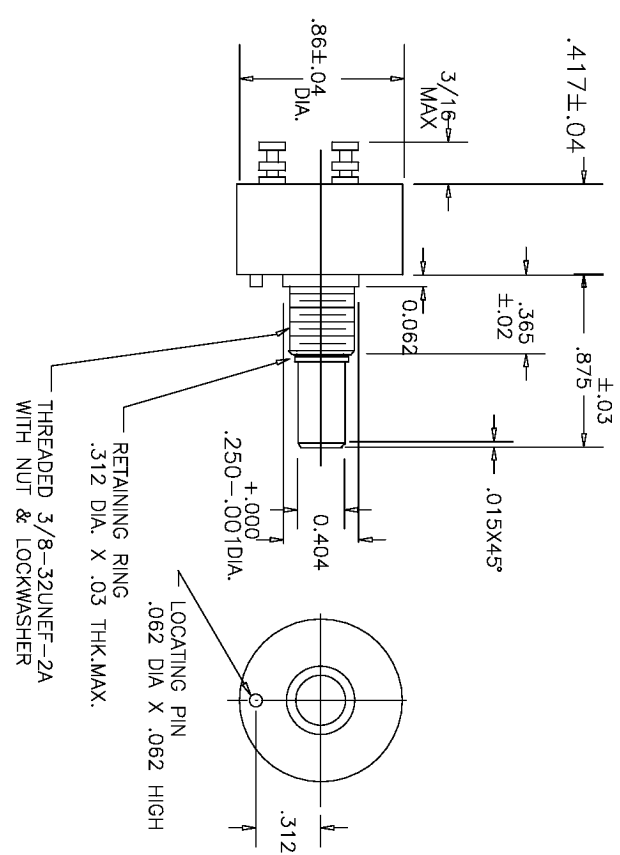
OPERATING TEMPERATURE-----55°C TO +105°C
 TEMPERATURE COEFFICIENT-----±400 P.P.M./°C
 VIBRATION-----10HZ TO 2000HZ 15G
 SHOCK-----50G 11MS
 MOISTURE RESISTANCE-----40°C 95%RH 120 HOURS

MATERIALS

HOUSING-----HIGH TEMPERATURE PLASTIC
 TERMINALS-----SOLDERABLE DOUBLE TURRET
 SHAFT-----STAINLESS STEEL
 ELEMENT-----CONDUCTIVE PLASTIC

OPTIONS

FRONT SHAFT MODIFICATIONS
 CENTER TAP
 O-RING SHAFT SEAL
 SEALED BODY
 SPECIAL ELECTRICAL / MECHANICAL ANGLES
 SPECIAL LINEARITY & RESISTANCE TOLERANCES
 SERVO MOUNT (SEE SP22GS)



TOLERANCES

XX = +/- .100" FRACT. = +/- 1/64"
 XXX = +/- .005" ANGLES = +/- 1/2"
 ALL SPECIFICATIONS SUBJECT TO CHANGE WITHOUT NOTICE.

SCALE	DATE:	10-19-00
NONE	BY	
APPRVD	BT	

CODE IDENT: 19477



ETI SYSTEMS
 CARLSBAD CALIFORNIA

TITLE

SINGLE TURN POTENTIOMETER

PART NO.

SP22G

Mouser Electronics

Authorized Distributor

Click to View Pricing, Inventory, Delivery & Lifecycle Information:

ETI Systems:

[SP22G-10K](#) [SP22G-1K](#) [SP22G-2K](#) [SP22G-5K](#) [SP22G-500](#)