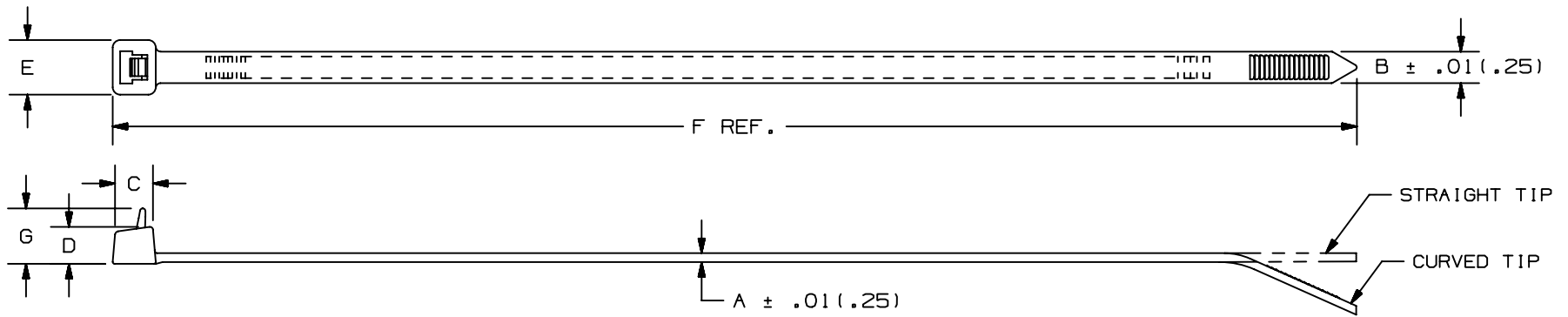


THIS COPY IS PROVIDED ON A RESTRICTED BASIS AND IS NOT TO BE USED IN ANY WAY DETRIMENTAL TO THE INTERESTS OF PANDUIT CORP.



PANDUIT * PART NO.	BUNDLE DIA.		A in (mm)	B in (mm)	C in (mm)	D in (mm)	E in (mm)	F in (mm)	G in (mm)	MIN. LOOP TENSILE lbs (N)	CROSS- SECTION	TIP STYLE	WEIGHT lbs/100pcs (g)
	MIN in (mm)	MAX in (mm)											
PRT1S	.06 (1.5)	1.00 (25)	.052 (1.3)	.190 (4.8)	.258 (6.5)	.219 (5.6)	.316 (8.0)	4.8 (122)	.318 (8.1)	50 (222)	STANDARD	CURVED	.13 (59)
PRT1.5S	.06 (1.5)	1.50 (38)	.052 (1.3)	.190 (4.8)	.258 (6.5)	.219 (5.6)	.316 (8.0)	6.3 (160)	.318 (8.1)	50 (222)	STANDARD	CURVED	.26 (119)
PRT2S	.06 (1.5)	1.88 (48)	.052 (1.3)	.190 (4.8)	.258 (6.5)	.219 (5.6)	.316 (8.0)	7.4 (188)	.318 (8.1)	50 (222)	STANDARD	CURVED	.29 (132)
PRT3S	.06 (1.5)	3.00 (76)	.052 (1.3)	.190 (4.8)	.265 (6.7)	.219 (5.6)	.337 (8.6)	11.5 (292)	.318 (8.1)	50 (222)	STANDARD	CURVED	.45 (205)
PRT4S	.06 (1.5)	4.00 (102)	.052 (1.3)	.190 (4.8)	.265 (6.7)	.219 (5.6)	.337 (8.6)	14.5 (368)	.318 (8.1)	50 (222)	STANDARD	CURVED	.56 (255)

NOTES:

* 1) SEE CURRENT PRICE SHEET FOR PART NUMBER SUFFIX DESIGNATIONS FOR PACKAGE SIZE AND PART COLOR.

DIMENSIONS IN PARENTHESES ARE IN METRIC UNITS.

										<h1>PANDUIT</h1> <p>CORP. TINLEY PARK, ILLINOIS</p> <h2>PAN-TY CABLE TIES RELEASABLE SERIES</h2>							
										<p>UNLESS OTHERWISE SPECIFIED, DIMENSIONAL TOLERANCES ARE: (.X) ± ----- (.XXX) ± .020(.51) (.XX) ± .02(.5) ANGLES ± -----</p>				<p>UNLESS OTHERWISE SPECIFIED, ALL DIMENSIONS ARE GIVEN IN INCHES, THIRD ANGLE PROJECTION.</p>			
--	----	---	CORRECTED MATERIAL NAME				----	--	DRAWN BY CEW		MAT'L: NYLON 6.6		SCALE NONE				
13	6/22/05	ERW	ADDED TOLERANCE TO DIMENSIONS 'A' & 'B'				4472	13	DATE 7-31-85		DRAWING NO. SS-4472		DWG A				
REV	DATE	BY	CHK	DESCRIPTION				ECN	R	CUST	SUP	SHEET 1 OF 2		SIZE A			

Mouser Electronics

Authorized Distributor

Click to View Pricing, Inventory, Delivery & Lifecycle Information:

[Panduit:](#)

[PRT2S-M](#) [PRT3S-M](#) [PRT4S-M](#) [PRT1S-M](#) [PRT1.5S-M](#)