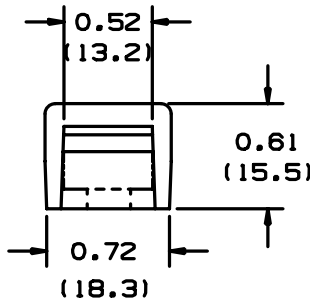
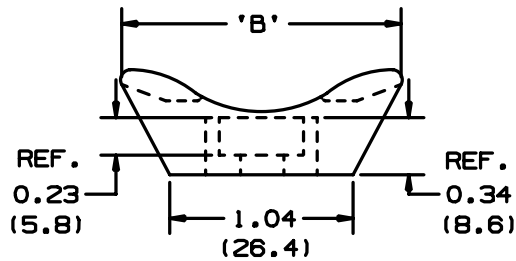
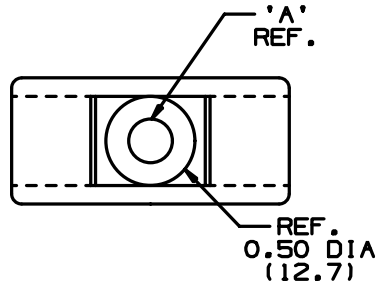


THIS COPY IS PROVIDED ON A RESTRICTED BASIS AND IS NOT TO BE USED IN ANY WAY DETRIMENTAL TO THE INTERESTS OF PANDUIT CORP.



PANDUIT PART NUMBER*	*MATERIAL SUFFIX	'A' DIA.	'B'	MTG. SCREW	WEIGHT lbs/100 pcs (g)/100 pcs	USE WITH ANY OF THESE CABLE TIES
TMEH-S8	-0	0.18 (4.8)	1.62 (41.1)	#8 (M4)	1.04 (471.4)	I,S,H,EH
TMEH-S10	-0	0.20 (5.1)	1.65 (41.9)	#10 (M5)	1.03 (467.4)	I,S,H,EH
	-100 -109					
TMEH-S25	-0	0.26 (6.6)	1.62 (41.1)	1/4" (M6)	1.01 (458.0)	I,S,H,EH

*MATERIAL SUFFIX	MATERIAL
-0	WEATHER RESISTANT NYLON
-100	WEATHER RESISTANT POLYPROPYLENE
-109	POLYPROPYLENE

NOTES:

- SEE CURRENT PRICE SHEET FOR PART NUMBER SUFFIX DESIGNATION FOR PACKAGE SIZE.
- CABLE TIE CROSS SECTION CODE:
I=INTERMEDIATE,S=STANDARD
H=HEAVY DUTY,EH=EXTRA HEAVY.

DIMENSIONS IN BRACKETS ARE METRIC [mm]

CAD FILENAME/LAYERS G00239EL_PB_TMEH_02

PANDUIT

CORP. TINLEY PARK, ILLINOIS

TMEH-XX
TIE MOUNT

REV	DATE	BY	CHK	DESCRIPTION	ECN	R	CUST	SUP	DRWN BY	DATE	MAT'L	SCALE	DWG NO.	DWG SIZE
2	10/28/03	MSAD		ADDED SEPERATE TMEH-S10 ROW FOR -100 AND -109 PARTS, 0.50 (12.7) DIA WAS .52 (13.2), 'B' WAS 1.65 (41.9) FOR -0 PARTS, 0.72 (18.3) WAS .74 (18.8) 1.04 (26.4) WAS 1.05 (26.7)	G80239EL	2								
1	7/24/01	LGG		ADDED REF & UPDATED	G80239EL	1			AJV			NONE		
R	12/13/98	AJV		INITIAL RELEASE	G80239EL	R				12/13/98	SEE TABLE			A
													G80239EL	

UNLESS OTHERWISE SPECIFIED,
DIMENSIONAL TOLERANCES ARE:
(.X) ±0.05 (1.3) (.XXX) ±0.010 (0.25)
(.XX) ±0.02 (0.5) ANGLES ± 5°

UNLESS OTHERWISE SPECIFIED,
ALL DIMENSIONS ARE GIVEN
IN INCHES, THIRD ANGLE PROJECTION.

DRWN BY
AJV
DATE
12/13/98
CHK'D

MAT'L:
SEE TABLE

SCALE
NONE
DRAWING NO.
G80239EL
Dwg
A
SIZE

Mouser Electronics

Authorized Distributor

Click to View Pricing, Inventory, Delivery & Lifecycle Information:

Panduit:

[TMEH-S10-C0](#) [TMEH-S25-C0](#) [TMEH-S8-Q0](#) [TMEH-S10-C100](#) [TMEH-S10-C109](#) [TMEH-S10-Q0](#) [TMEH-S25-Q0](#)
[TMEH-S8-C0](#) [TMEH-S25-X0](#) [TMEH-S10-X0](#) [TMEH-S8-X0](#)