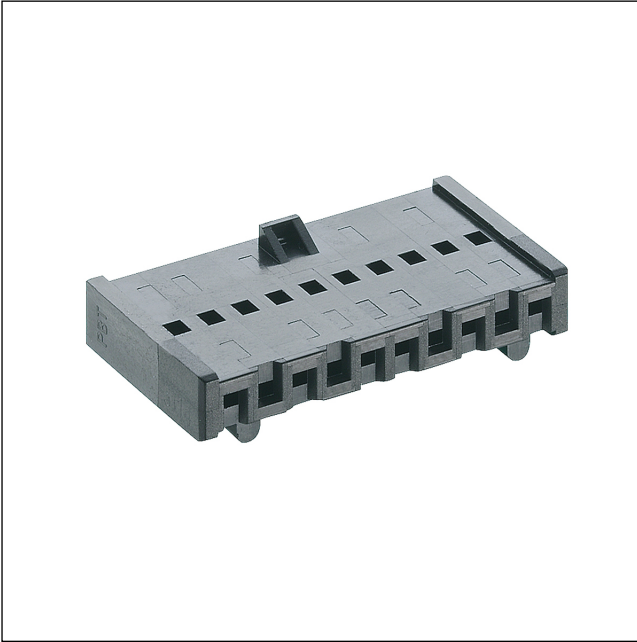


31

3114

Minimodul™ connectors, pitch 2.5 mm



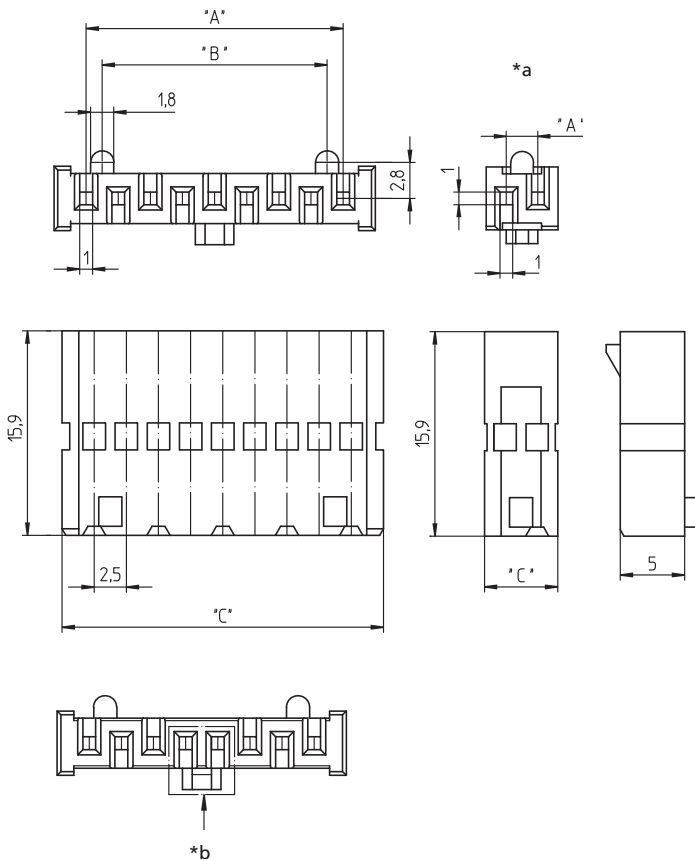
Empty Minimodul™ housing for reception of crimp contacts, for indirect mating

Approvals:



31

3114



- *a 2 pole version
- *b shape for even pole numbers above 2-pole

Environmental conditions

Temperature range -25 °C/+100 °C

Materials

Insulating body PBT, V-0 according to UL94

Mechanical data

Further data see suitable crimp contact

Electrical data (at T_{amb} 20 °C)

Rated current 5.0 A (T_{amb} 30 °C) (UL AWG 22–20)
2.5 A (T_{amb} 70 °C) (UL AWG 26–24)

Rated voltage 125 V AC (UL 120 V AC) (every chamber equipped)
250 V AC (every other chamber equipped)

Material group IIIa (CTI = 250)¹

Overvoltage category II (1,5 kV)¹

Creepage distance 1.5 mm (every chamber equipped)
4.0 mm (every other chamber equipped)

Clearance 1.5 mm (every chamber equipped)
4.0 mm (every other chamber equipped)

Insulation resistance > 1 GΩ

Further data see suitable crimp contact

¹ according to DIN VDE 0110/IEC 60664

Associated products

Counterparts

| | | |
|--------------|--------------|-------------|
| ☞ 2,5 MS | ☞ 2,5 MSF | ☞ 2,5 MSF/O |
| ☞ 2,5 MSFQ | ☞ 2,5 MSFQ/O | ☞ 2,5 MSFW |
| ☞ 2,5 MSFW/O | | |

Accessories

| | | |
|-------------|-------------|-------------|
| ☞ 3111 01 G | ☞ 3111 01 L | ☞ 3111 03 G |
| ☞ 3111 03 L | | |

| Designation | Pole Number | PU (Pieces) | MDQ (Pieces) | Dimensions | | |
|--------------|-------------|-------------|--------------|------------|--------|--------|
| | | | | A (mm) | B (mm) | C (mm) |
| 3114 02 VP15 | 2 | 2500 | 2500 | 2.5 | - | 5.7 |
| 3114 03 VP15 | 3 | 2500 | 2500 | 5.0 | 2.5 | 10.0 |
| 3114 04 VP15 | 4 | 2500 | 2500 | 7.5 | 5.0 | 12.5 |
| 3114 05 VP15 | 5 | 2500 | 2500 | 10.0 | 7.5 | 15.0 |
| 3114 06 VP15 | 6 | 2500 | 2500 | 12.5 | 10.0 | 17.5 |
| 3114 07 VP15 | 7 | 2500 | 2500 | 15.0 | 12.5 | 20.0 |
| 3114 08 VP15 | 8 | 2500 | 2500 | 17.5 | 15.0 | 22.5 |
| 3114 09 VP15 | 9 | 2500 | 2500 | 20.0 | 17.5 | 25.0 |
| 3114 10 VP15 | 10 | 2500 | 2500 | 22.5 | 20.0 | 27.5 |
| 3114 11 VP15 | 11 | 1000 | 2000 | 25.0 | 22.5 | 30.0 |
| 3114 12 VP15 | 12 | 1000 | 2000 | 27.5 | 25.0 | 32.5 |
| 3114 13 VP15 | 13 | 1000 | 2000 | 30.0 | 27.5 | 35.0 |
| 3114 14 VP15 | 14 | 1000 | 2000 | 32.5 | 30.0 | 37.5 |
| 3114 15 VP15 | 15 | 1000 | 2000 | 35.0 | 32.5 | 40.0 |
| 3114 16 VP15 | 16 | 1000 | 2000 | 37.5 | 35.0 | 42.5 |
| 3114 17 VP15 | 17 | 1000 | 2000 | 40.0 | 37.5 | 45.0 |
| 3114 18 VP15 | 18 | 1000 | 2000 | 42.5 | 40.0 | 47.5 |
| 3114 19 VP15 | 19 | 1000 | 2000 | 45.0 | 42.5 | 50.0 |
| 3114 20 VP15 | 20 | 1000 | 2000 | 47.5 | 45.0 | 52.5 |

Packaging:

in bulk, in a cardboard box