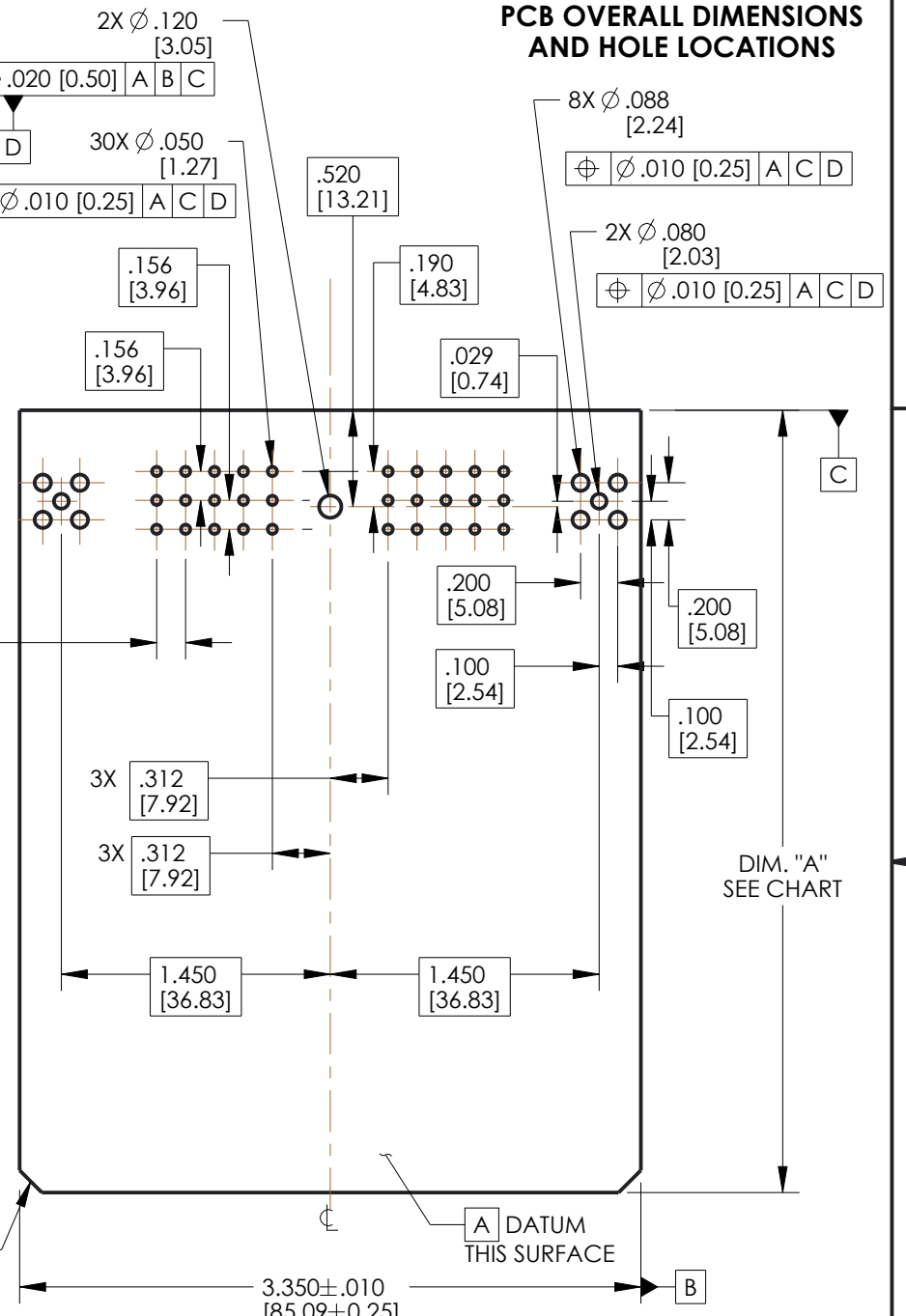
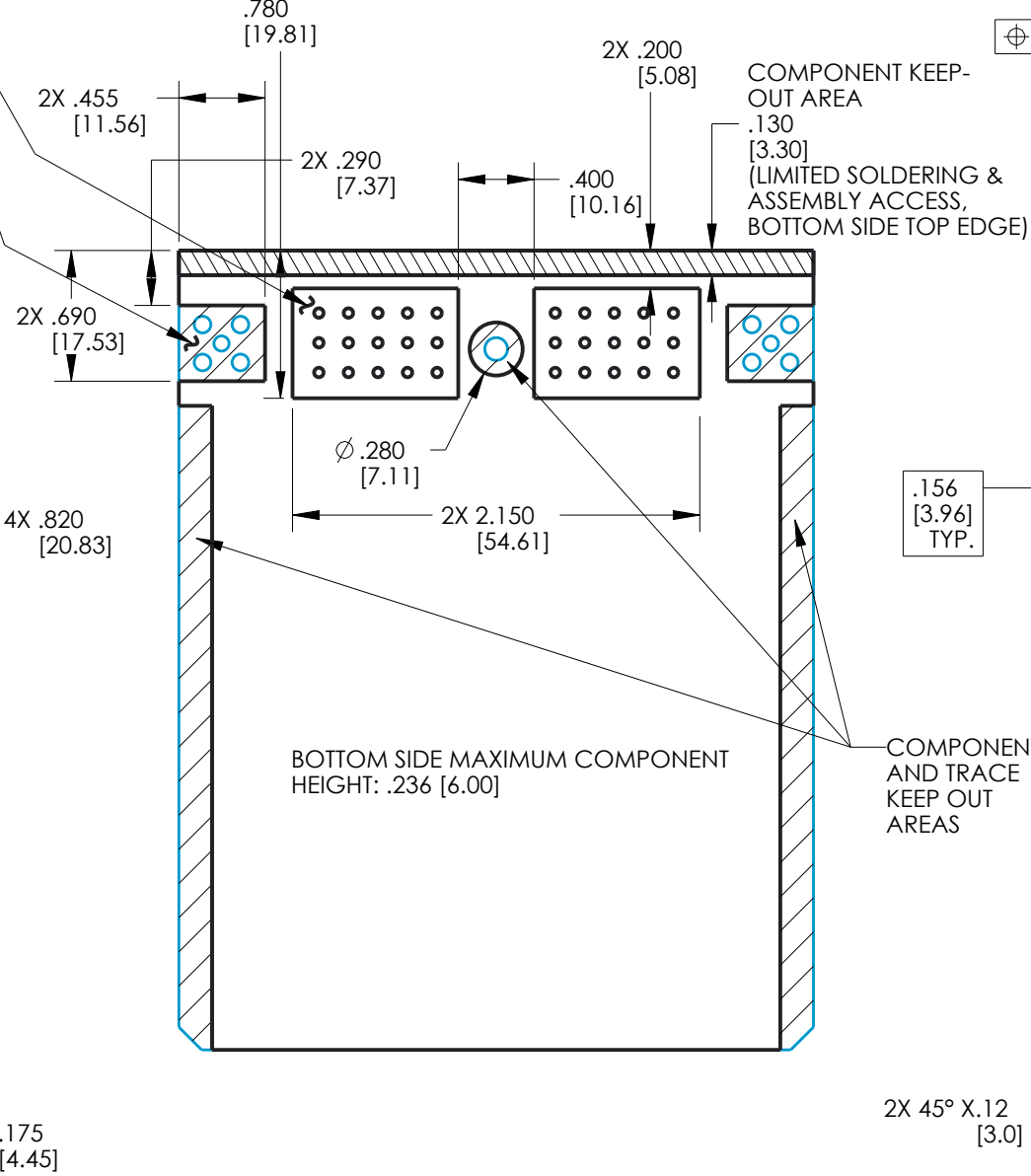
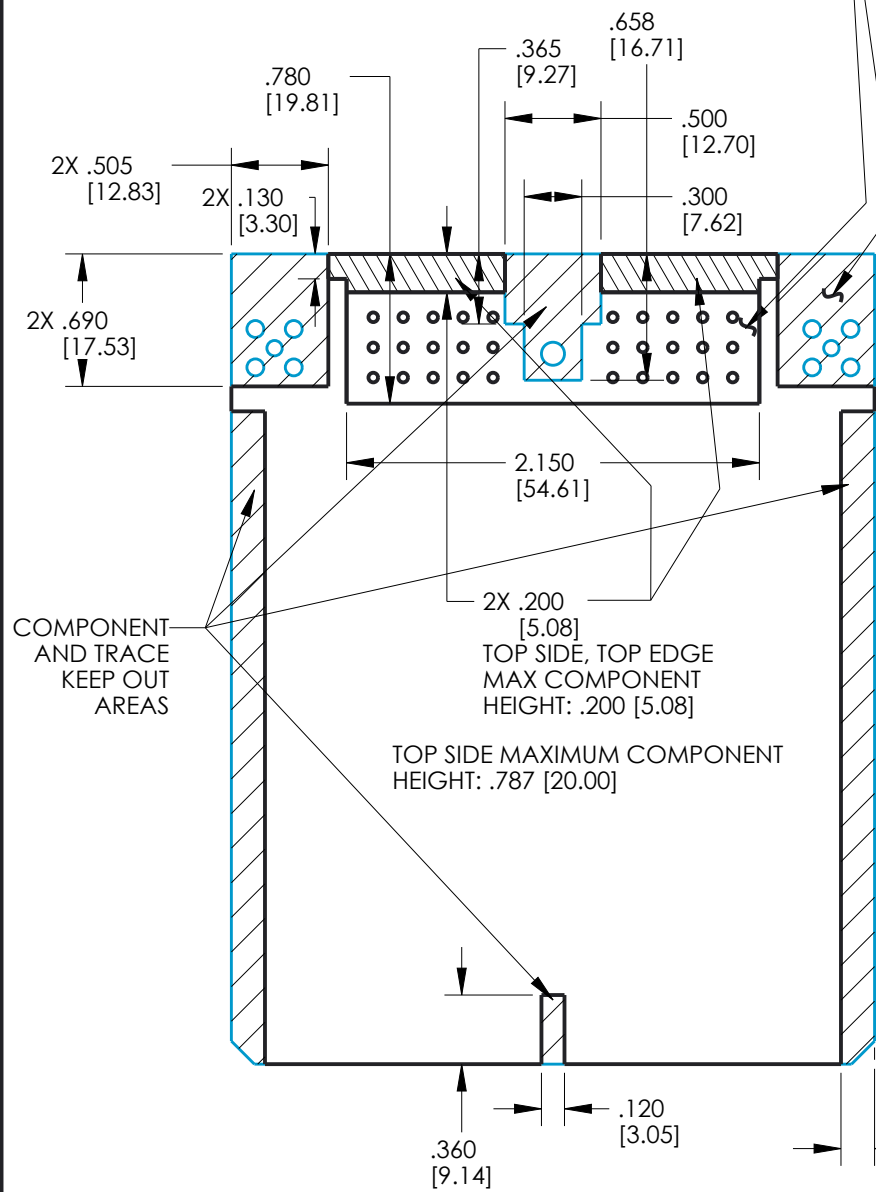


RECOMMENDED PCB TOP SIDE GENERAL ZONING AND KEEP-OUT AREAS

RECOMMENDED PCB BOTTOM SIDE GENERAL ZONING AND KEEP-OUT AREAS

RECOMMENDED PCB OVERALL DIMENSIONS AND HOLE LOCATIONS



COMPONENT AND TRACE KEEP OUT AREAS

TOP SIDE MAXIMUM COMPONENT HEIGHT: .787 [20.00]

2X .200 [5.08] TOP SIDE, TOP EDGE MAX COMPONENT HEIGHT: .200 [5.08]

BOTTOM SIDE MAXIMUM COMPONENT HEIGHT: .236 [6.00]

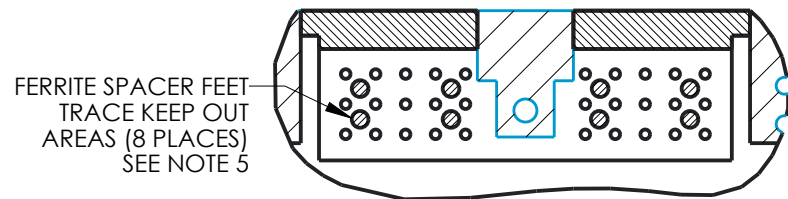
COMPONENT AND TRACE KEEP OUT AREAS

DIM. "A" SEE CHART

A DATUM THIS SURFACE

RECOMMENDED PCB LENGTH

DIM. "A" (SEE DRAWING)	USE WITH ENCLOSURE	
	PART NUMBER	DESCRIPTION
4.220±0.015 [107.19±0.38]	581 01 30 065	ME
	581 01 30 075	ME WITH BREATHER
2.520±0.015 [64.01±0.38]	581 01 30 090	MINI ME
	581 01 30 095	MINI ME WITH BREATHER



PCB TOP SIDE PIN AREA WITH FERRITES DETAIL

UNITS ENGLISH INCHES	CINCH		1700 FINLEY RD LOMBARD, IL. 60148
	DO NOT SCALE DRAWING		
TITLE MODICE ME-RF 30 WAY / SMA HEADER ASSEMBLY			
PRO/E DRAWING			
<small>CONFIDENTIAL</small> THIS DOCUMENT IS THE PROPERTY OF CINCH. NEITHER THIS DOCUMENT NOR ANY OF THE INFORMATION CONTAINED IN IT MAY BE DUPLICATED OR DISCLOSED WITHOUT PRIOR WRITTEN CONSENT OF CINCH. ©COPYRIGHT 2008 CINCH	CAD FILE NUMBER 5810630001S	DRAWING NUMBER 5810630001S	REV E
	CAGE IDENT NO. 71785	SIZE B	SCALE 1:1
	SHEET 2 OF 2		

Mouser Electronics

Authorized Distributor

Click to View Pricing, Inventory, Delivery & Lifecycle Information:

Cinch Connectivity Solutions:

[5810630008](#) [5810630005](#) [5810630006](#) [5810630001](#) [5810630004](#) [5810630007](#) [5810630010](#) [5810630002](#)
[5810630009](#) [5810630003](#)