

Customer Information Sheet

DRAWING No.: M80-00300XX

SHEET 2 OF 2

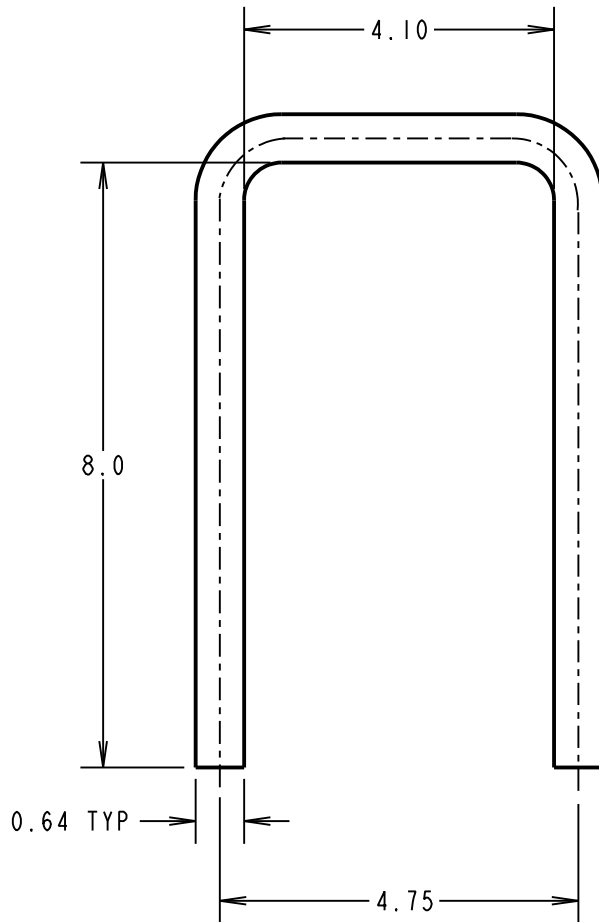
IF IN DOUBT - ASK

©

NOT TO SCALE

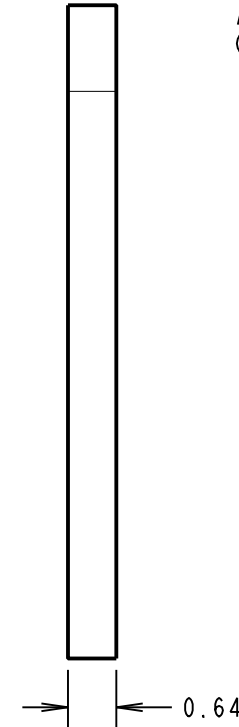
THIRD ANGLE PROJECTION

ALL DIMENSIONS IN mm



NOTES:

- SUPPLIED WITH ALL HORIZONTAL M80 DATAMATE LATCH-STYLE CONNECTORS. ALSO SUITABLE FOR USE WITH VERTICAL CONNECTORS.



PART No.	FINISH
M80-0030006	3 μ 100% TIN/NICKEL
M80-0030045	0.25 μ GOLD/NICKEL

MSP	12	17.08.16	13282
NAME	ISS.	DATE	C/NOTE
APPROVED:		M.PERREN	
CHECKED:		S.BENNETT	
DRAWN:		I. SANDY	
CUSTOMER REF.:			
ASSEMBLY DRG:			

HARWIN

www.harwin.com
technical@harwin.com

THIS DRAWING AND ANY INFORMATION OR DESCRIPTIVE MATTER SET OUT HEREON ARE CONFIDENTIAL AND COPYRIGHT PROPERTY OF THE HARWIN GROUP AND MUST NOT BE DISCLOSED, LOANED, COPIED OR USED FOR MANUFACTURING, TENDERING OR FOR ANY OTHER PURPOSE WITHOUT THEIR WRITTEN PERMISSION.

TOLERANCES

X. = ± 1 mm
X.X = ± 0.50 mm
X.XX = ± 0.10 mm
X.XXX = ± 0.01 mm

ANGLES = $\pm 5^\circ$

UNLESS STATED

MATERIAL:

BRASS CW508L H150 TO BS EN 1652
(CuZn37 HARD)

FINISH: SEE TABLE

S/AREA: mm²

TITLE:

DATAMATE
PLUG RETAINING STRAP

DRAWING NUMBER:

M80-00300XX

SHT
2
OF 2

Mouser Electronics

Authorized Distributor

Click to View Pricing, Inventory, Delivery & Lifecycle Information:

Harwin:

[M80-0030006](#) [M80-0030045](#)