



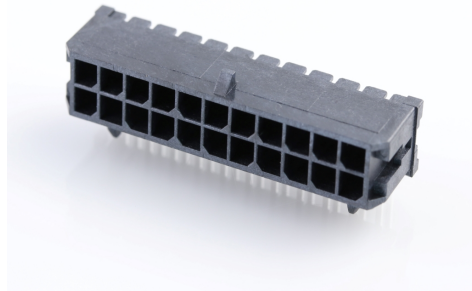
**Part Number :** [430452202](#)

**Product Description :** Micro-Fit 3.0 Right-Angle Header, 3.00mm Pitch, Dual Row, 22 Circuits, with Snap-in Plastic Peg PCB Lock, Gold, Glow-Wire Capable, Black

**Series Number :** 43045

**Status :** Active

**Product Category :** PCB Headers and Receptacles



---

## Documents & Resources

### Drawings

[Drawing 430452202\\_sd.pdf](#)

[Packaging Design Drawing PK-70873-0313-001.pdf](#)

### 3D Models and Design Files

[3D Model 430452202\\_stp.zip](#)

[Symbol Footprint Data SYM-43045-2200-001.zip](#)

### Specifications

[Application Specification AS-43045-001-001.pdf](#)

[Product Specification 430450001-PS-KO-000.pdf](#)

[Product Specification 430450001-PS-SP-000.pdf](#)

[Product Specification PS-43045-001.pdf](#)

[Test Summary 430450006-TS-000.pdf](#)

[Test Summary TS-43045-001-001.pdf](#)

[Test Summary TS-43045-002-001.pdf](#)

[Test Summary TS-46235-001-001.pdf](#)

---

## Product Environment Compliance

### Compliance

|                    |  |
|--------------------|--|
| GADSL/IMDS         | Compliant with Exemption 44; 34; 33            |
| China RoHS         |  |
| EU ELV             | Not Relevant                                   |
| Low-Halogen Status | Low-Halogen per IEC 61249-2-21                 |
| REACH SVHC         | Not Contained per D(2023)8585-DC (23 Jan 2024) |
| EU RoHS            | Compliant per EU 2015/863                      |

## Multiple Part Product Compliance Statements

- Eu RoHS
- REACH SVHC
- Low-Halogen

## Multiple Part Industry Compliance Documents

- IPC 1752A Class C
- IPC 1752A Class D
- Molex Product Compliance Declaration
- IEC-62474
- chemSHERPA (xml)

## EU RoHS Certificate of Compliance

---

## Part Details

### General

|             |  |
|-------------|--|
| Status      | Active   |
| Category    | PCB Headers and Receptacles  |
| Series      | 43045  |
| Description | Micro-Fit 3.0 Right-Angle Header, 3.00mm Pitch, Dual Row, 22 Circuits, with Snap-in Plastic Peg PCB Lock, Gold, Glow-Wire Capable, Black |
| Application | Power, Wire-to-Board   |

|                |  |
|----------------|--|
| Comments       | High Temperature, Square Pin, Solder Type; This Molex product is manufactured from material that has the following ratings, tested by independent agencies: a) A Glow Wire Ignition Temperature (GWIT) of at least 775 deg C per IEC 60695-2-13. b) A Glow Wire Flammability Index (GWFI) above 850 deg C per IEC 60695-2-12 and hence complies with the requirements set out in the International Standard IEC 60335-1 5th edition - household and similar electrical appliances - safety, section 30 Resistance to heat and fire. The customers using this product must determine its suitability for use in their particular application through testing or other acceptable means as described in end-product glow-wire flammability test standard IEC 60695-2-11 and any applicable product end-use standard(s). If it is determined during the customer's evaluation of suitability, that higher performance is required, please contact Molex for possible product options. |
| Component Type | PCB Header   |
| Product Family | Micro-Fit Connector System   |
| Product Name   | Micro-Fit 3.0  |
| UPC            | 800754375757   |

#### Agency

|     |         |
|-----|---------|
| CSA | LR19980 |
| UL  | E29179  |

#### Electrical

|                               |      |
|-------------------------------|------|
| Current - Maximum per Contact | 8.5A |
| Voltage - Maximum             | 600V |

#### Physical

|                    |       |
|--------------------|-------|
| Breakaway          | No    |
| Circuits (Loaded)  | 22    |
| Circuits (maximum) | 22    |
| Color - Resin      | Black |

|                                |                                |
|--------------------------------|--------------------------------|
| Durability (mating cycles max) | 30                             |
| Flammability                   | 94V-0                          |
| Glow-Wire Capable              | Yes                            |
| Mated Height                   | 10.29mm                        |
| Material - Metal               | Brass                          |
| Material - Plating Mating      | Gold                           |
| Material - Plating Termination | Tin                            |
| Material - Resin               | High Temperature Thermoplastic |
| Net Weight                     | 3.354/g                        |
| Number of Rows                 | 2                              |
| Orientation                    | Right Angle                    |
| Packaging Type                 | Tray                           |
| PCB Locator                    | Yes                            |
| PCB Retention                  | Yes                            |
| PCB Thickness - Recommended    | 1.60mm                         |
| Pitch - Mating Interface       | 3.00mm                         |
| Plating min - Mating           | 0.762µm                        |
| Polarized to PCB               | Yes                            |
| Shrouded                       | Fully                          |
| Stackable                      | No                             |
| Temperature Range - Operating  | -40° to +125°C                 |
| Termination Interface Style    | Through Hole                   |

### Solder Process Data

|                              |          |
|------------------------------|----------|
| Max-Duration                 | 30       |
| Lead-Free Process Capability | SMC&WAVE |
| Max-Cycle                    | 3        |
| Max-Temp                     | 260      |

---

### Mates With / Use With

#### Mates with Part(s)

| Description                                | Part Number  |
|--|--------------|
| Micro-Fit 3.0 Dual Row Receptacle Housings | <u>43025</u> |

---

---

This document was generated on Mar 15, 2024