

MAXM17901 3.3V Output Evaluation Kit

Evaluates: MAXM17901 3.3V Output-Voltage Application

General Description

The MAXM17901 3.3V output evaluation kit (EV kit) provides a proven design to evaluate the MAXM17901 high-voltage, high-efficiency, synchronous step-down DC-DC module. The EV kit is programmed to deliver 3.3V output for loads up to 300mA. The EV kit features an adjustable input undervoltage lockout, selectable mode, and open-drain $\overline{\text{RESET}}$ signal. The MAXM17901 data sheet provides a complete description of the module that should be read in conjunction with this EV kit data sheet prior to modifying the demo circuit. For full module features, benefits and parameters, refer to the MAXM17901 data sheet.

Features

- Highly Integrated Solution
- Wide 5.5V to 24V Input Range
- Fixed 3.3V Output, Delivers Up To 300mA Output Current
- High 85.51% Efficiency ($V_{\text{IN}} = 12\text{V}$, $V_{\text{OUT}} = 3.3\text{V}$ at 100mA)
- 500kHz Switching Frequency
- ENABLE/UVLO Input, Resistor-Programmable UVLO Threshold
- PFM Feature for Better Light-Load Efficiency
- Fixed Internal 4.1ms Soft-Start Time
- $\overline{\text{RESET}}$ Output, with Pullup Resistor to V_{CC}
- Overcurrent and Overtemperature Protection (OCP and OTP)
- Low-Profile, Surface-Mount Components
- Proven PCB Layout
- Fully Assembled and Tested
- Complies with CISPR22(EN55022) Class B Conducted and Radiated Emissions

Quick Start

Recommended Equipment

- One 4.5V to 24V DC, 300mA power supply
- 1W resistive load with 300mA sink capacity
- Four digital multimeters (DMM)
- MAXM17901EVKIT#

Equipment Setup and Test Procedure

The EV kit is fully assembled and tested. Follow the steps below to verify the board operation.

Caution: Do not turn on power supply until all connections are completed.

- 1) Set the power supply at a voltage between 4.5V and 24V. Then, disable the power supply.
- 2) Connect the positive terminal of the power supply to the VIN PCB pad and the negative terminal to the nearest GND PCB pad. Connect the positive terminal of the 300mA load to the VOUT PCB pad and the negative terminal to the nearest GND PCB pad.
- 3) Connect the DVM (DMM in voltage-measurement mode) across the VOUT PCB pad and the nearest GND PCB pad.
- 4) Verify that shunt is not installed on jumper J1 (see [Table 1](#) for details).
- 5) Turn on the DC power supply.
- 6) Enable the load.
- 7) Verify that the DVM displays 3.3V.

[Ordering Information](#) appears at end of data sheet.

Detailed Description

The MAXM17901 EV kit is designed to demonstrate salient features of MAXM17901 power module. The EV kit includes an EN/UVLO PCB pad, and jumper J1, to enable the output at a desired input voltage. Jumper J2 allows selection of either PWM or PFM mode of operation based on light-load performance requirements. An additional $\overline{\text{RESET}}$ pad is available for monitoring if the converter output voltage is in regulation.

Output Capacitor Selection

X7R ceramic output capacitors are preferred due to their stability over temperature in industrial applications. The required output capacitor (C5) for 3.3V output is selected from [Table 1](#) of the [MAXM17901](#) data sheet as 10 μ F/6.3V.

Fixed Output Voltage

The MAXM17901 is a fixed 3.3V output module. Connect FB of MAXM17901 directly to VOUT for feedback control.

Enable/Undervoltage-Lockout (EN/UVLO) Programming

The MAXM17901 offers an adjustable input undervoltage-lockout feature. In this EV kit, for normal operation, leave jumper J1 open. When J1 is left open, the MAXM17901 is enabled when the input voltage rises above 5.4V. To disable MAXM17901, install a jumper across pins 2-3 on J1. See [Table 1](#) for J1 settings. A potential divider formed by R1 and R2 sets the input voltage (V_{INU}) at which the module is enabled. The value of resistor R1 is chosen to be 2.2M Ω , and R2 is calculated using the following equation:

$$R_2 = \frac{R_1 \times 1.215}{(V_{\text{INU}} - 1.215)}$$

where R1 and R2 are in k Ω ,

For MAXM17901 to turn on at 5.4V input, the Resistor R2 is calculated to be 634k Ω .

Table 1. UVLO Enable/Disable Configuration (J1)

| POSITION | EN/UVLO PIN | MAXM17901_ OUTPUT |
|----------------|---|---|
| Not Installed* | Connected to the center node of resistor-divider R1 and R2. | Programmed to startup at desired input-voltage level. |
| 1-2 | Connected to V_{IN} | Enabled if V_{IN} is greater than $V_{\text{IN(MIN)}}$. |
| 2-3 | Connected to GND | Disabled |

*Default position

Input Capacitor Selection

The input capacitor serves to reduce the current peaks drawn from the input power supply and reduces switching frequency ripple at the input. The input capacitance must be greater than or equal to the value given in [Table 1](#) of [MAXM17901](#) data sheet. Input capacitor C3 is chosen to be 1 μ F/50V.

Electro-Magnetic Interference (EMI)

Compliance to conducted emissions (CE) standards requires an EMI filter at the input of a switching power converter. The EMI filter attenuates high-frequency currents drawn by the switching power converter, and limits the noise injected back into the input power source.

Use of EMI filter components as shown in [Figure 1](#) in conjunction with the schematic results in lower conducted emissions, below CISPR22 Class B limits. The MAXM17901 EV kit PCB layout is also designed to limit radiated emissions from switching nodes of the power converter, resulting in radiated emissions below CISPR22 Class B limits.

Hot-Plug-In and Long Input Cables

The MAXM17901 EV kit PCB provides an optional electrolytic capacitor (C2, 4.7 μ F/50V) to dampen input voltage peaks and oscillations that can arise during hot-plug-in and/or due to long input cables. This capacitor limits the peak voltage at the input of the MAXM17901 power module, when the EV kit is powered directly from a precharged capacitive source or an industrial backplane PCB. Long input cables, between input power source and the EV kit circuit can cause input-voltage oscillations due to the inductance of the cables. The equivalent series resistance (ESR) of the electrolytic capacitor helps damp out the oscillations caused by long input cables. Further, capacitor C1 (0.1 μ F/50V), placed near the input of the board, helps in attenuating high frequency noise.

MAXM17901 3.3V Output Evaluation Kit

Evaluates: MAXM17901 3.3V Output-Voltage Application

Mode of Operation

The MAXM17901 features PFM mode of operation to increase the efficiency at light-load condition. If the MODE pin is left unconnected during powerup, the module operates in PFM mode at light loads. If the MODE pin is connected to GND during power-up, the part operates in constant-frequency PWM mode at all loads. See [Table 2](#) for J2 settings.

Internal LDO

An internal regulator provides a 5V nominal supply to power the internal functions of the module. The output of the linear regulator (V_{CC}) should be bypassed with a $1\mu\text{F}$ capacitor C4 to GND.

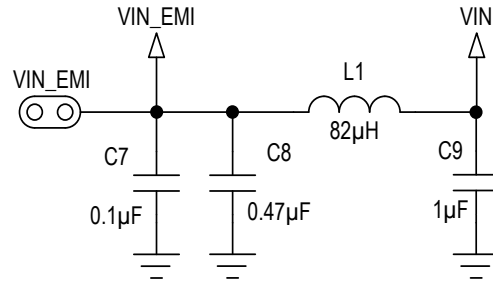


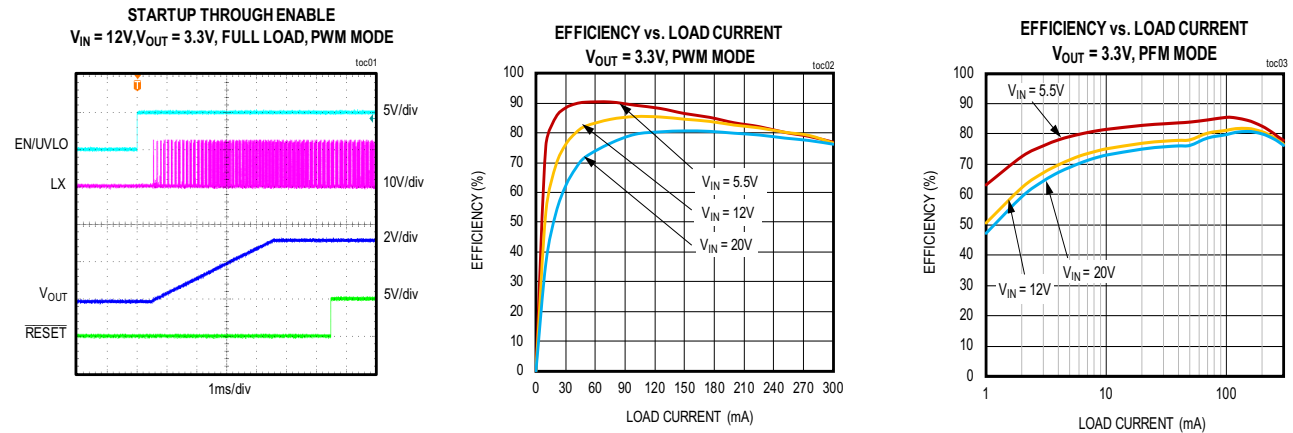
Figure 1. EMI Filter Components

Table 2. Mode of Operation (J2)

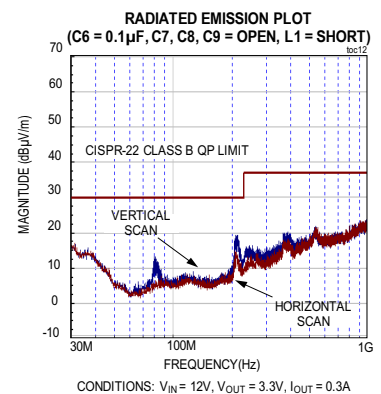
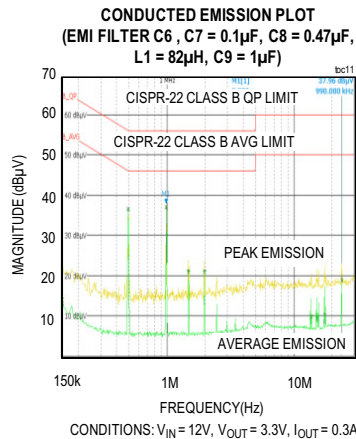
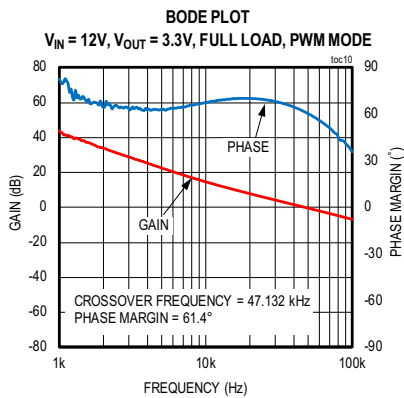
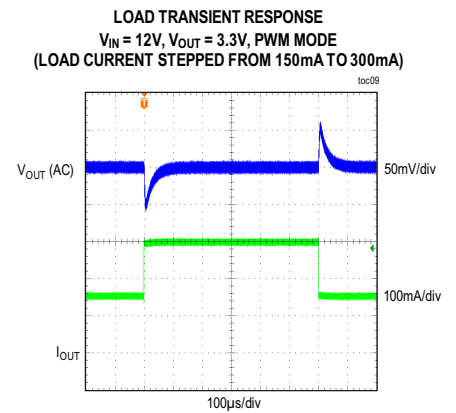
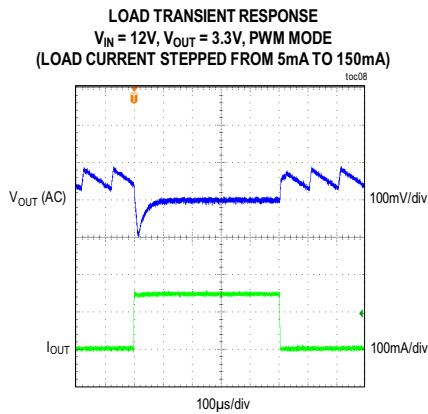
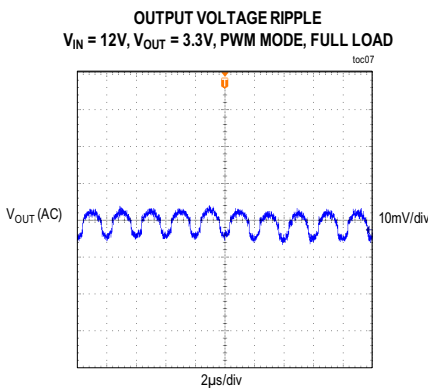
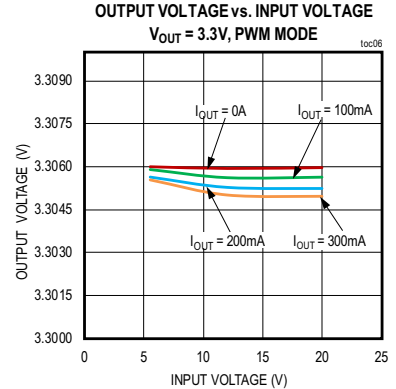
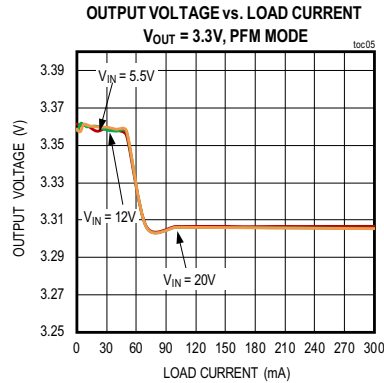
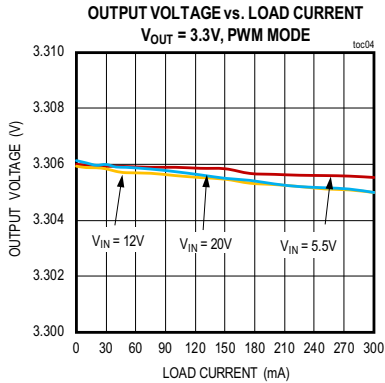
| POSITION | MODE PIN |
|----------------|--|
| 1-2 | Operates in PWM mode. |
| Not Installed* | Operates in PFM mode at light-load conditions. |

*Default position

EV Kit Performance Report



EV Kit Performance Report (continued)



MAXM17901 3.3V Output Evaluation Kit

Evaluates: MAXM17901 3.3V Output-Voltage Application

Ordering Information

| PART | TYPE |
|-----------------|--------|
| MAXM17901EVKIT# | EV Kit |

#Denotes RoHS compliant.

Component Suppliers

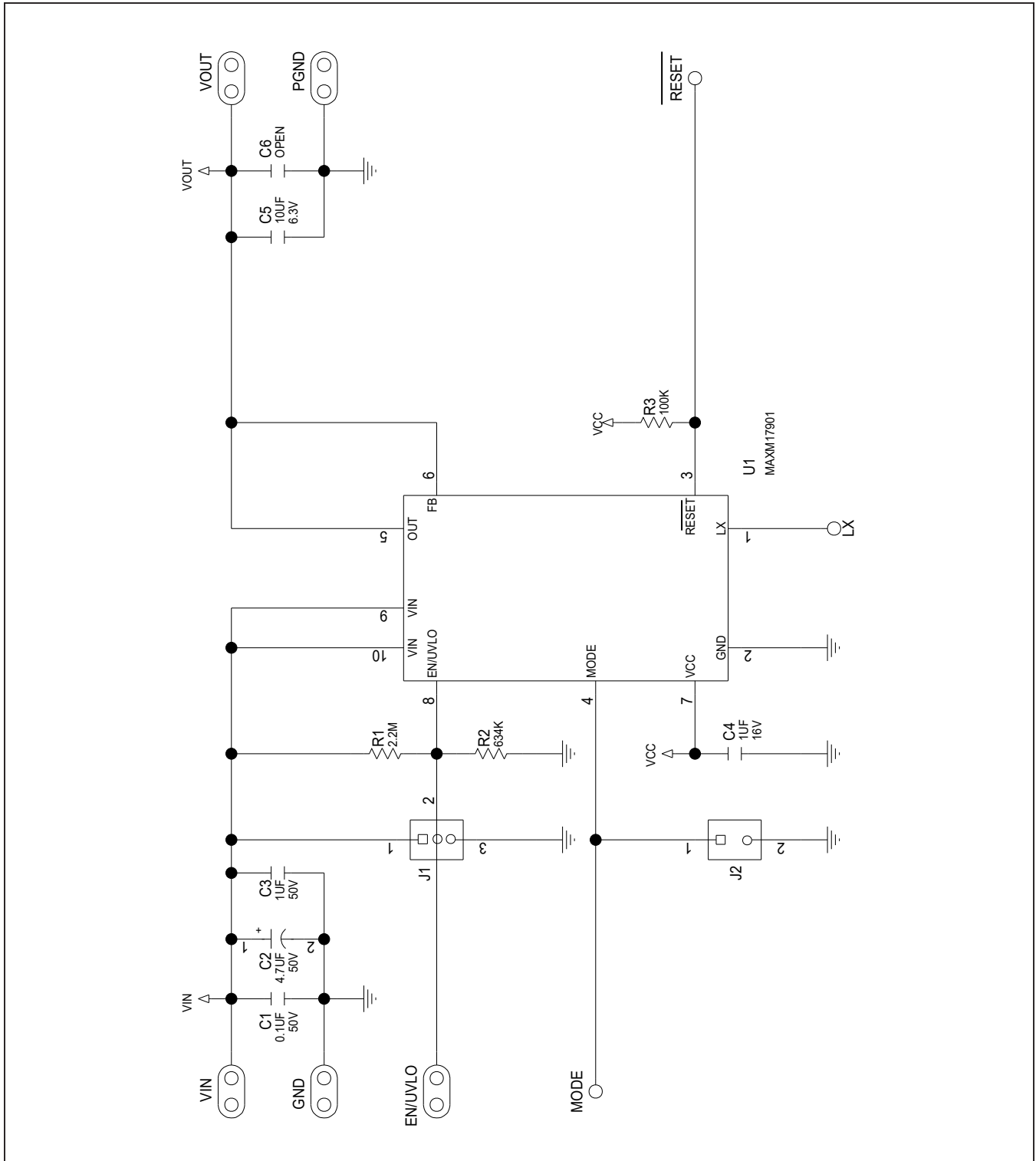
| SUPPLIER | WEBSITE |
|----------------------|-----------------------|
| Murata Americas | www.murata.com |
| Nichicon | www.nichicon.co.jp |
| Vishay Dale | www.vishay.com |
| Samsung Electronics. | www.samsungsem.com |
| TDK Corp. | www.component.tdk.com |
| YAGEO PHICOMP | www.yageo.com |

Note: Indicate that you are using the MAXM17901 when contacting these component suppliers.

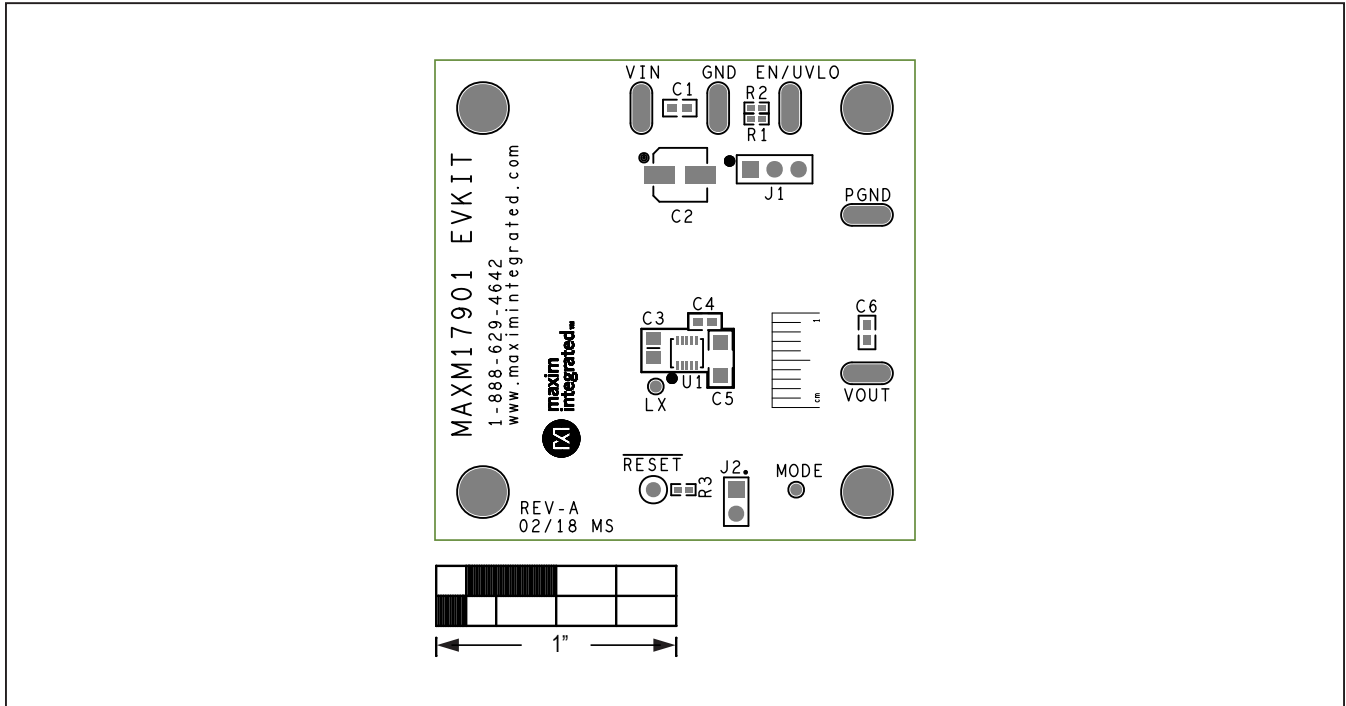
MAXM17901 3.3V EV Kit Bill of Materials

| ITEM | QTY | DESIGNATION | DESCRIPTION | MANUFACTURER PARTNUMBER-1 | MANUFACTURER PARTNUMBER-2 |
|------|-----|-------------|---|--|--------------------------------|
| 1 | 1 | C1 | 0.1µF±10%,50V, X7R ceramic capacitor (0603) | SAMSUNG ELECTRONICS CL10B104KB8NFNC | |
| 2 | 1 | C2 | 4.7µF±20%,50V, Aluminum Capacitor | NICHICON UUD1H4R7MCL | |
| 3 | 1 | C3 | 1µF±10%,50V, X7R ceramic capacitor (0805) | MURATA GRM21BR71H105KA12 | TDK C2012X7R1H105K085AC |
| 4 | 1 | C4 | 1µF±10%,16V, X7R ceramic capacitor (0603) | MURATA GRM188R71C105KA12 | TDK C1608X7R1C105K |
| 5 | 1 | C5 | 10µF±10%,6.3V, X7R ceramic capacitor (1206) | MURATA GRM31CR70J106K | |
| 6 | 1 | C6 | OPEN (OPTIONAL : 0.1µF±10%,50V, X7R ceramic capacitor (0603)) | Murata GRM188R71H104KA93 | |
| 7 | 1 | R1 | 2.2MΩ ±1% resistor (0402) | VISHAY DALE CRCW04022M20FK | |
| 8 | 1 | R2 | 634kΩ ±1% resistor (0402) | VISHAY DALE CRCW0402634KFK | |
| 9 | 1 | R3 | 100kΩ ±1% resistor (0402) | VISHAY DALE CRCW0402100KFK | YAGEO PHICOMP RC0402FR-07100KL |
| 10 | 1 | U1 | MAXM17901, 10-pin micro-SLIC Power Module | MAXIM MAXM17901AMB+T | |
| 11 | 1 | L1 | OPTIONAL : 82µH Shielded Wirewound Inductor(2016) | Murata LQH2MPN820MGRL | |
| 12 | 1 | C7 | OPTIONAL : 0.1µF±10%,50V, X7R ceramic capacitor (0603) | Murata GRM188R71H104KA93 | |
| 13 | 1 | C8 | OPTIONAL : 0.47µF±10%,50V, X7R ceramic capacitor (0805) | Murata GRM21BR71H474KA88 | |
| 14 | 1 | C9 | OPTIONAL : 1µF±10%,50V, X7R ceramic capacitor (0805) | Murata GRM21BR71H105KA12 | |

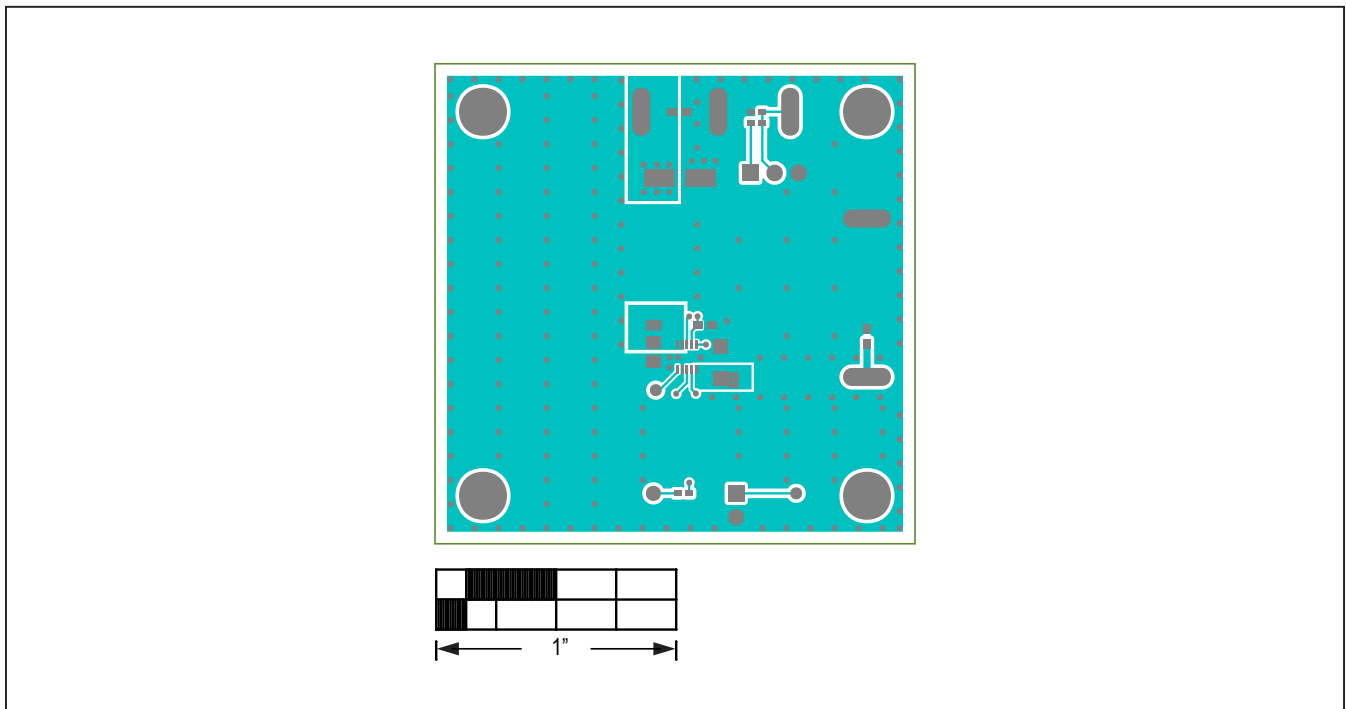
MAXM17901 3.3V EV Kit Schematic



MAXM17901 3.3V EV Kit PCB Layout Diagrams

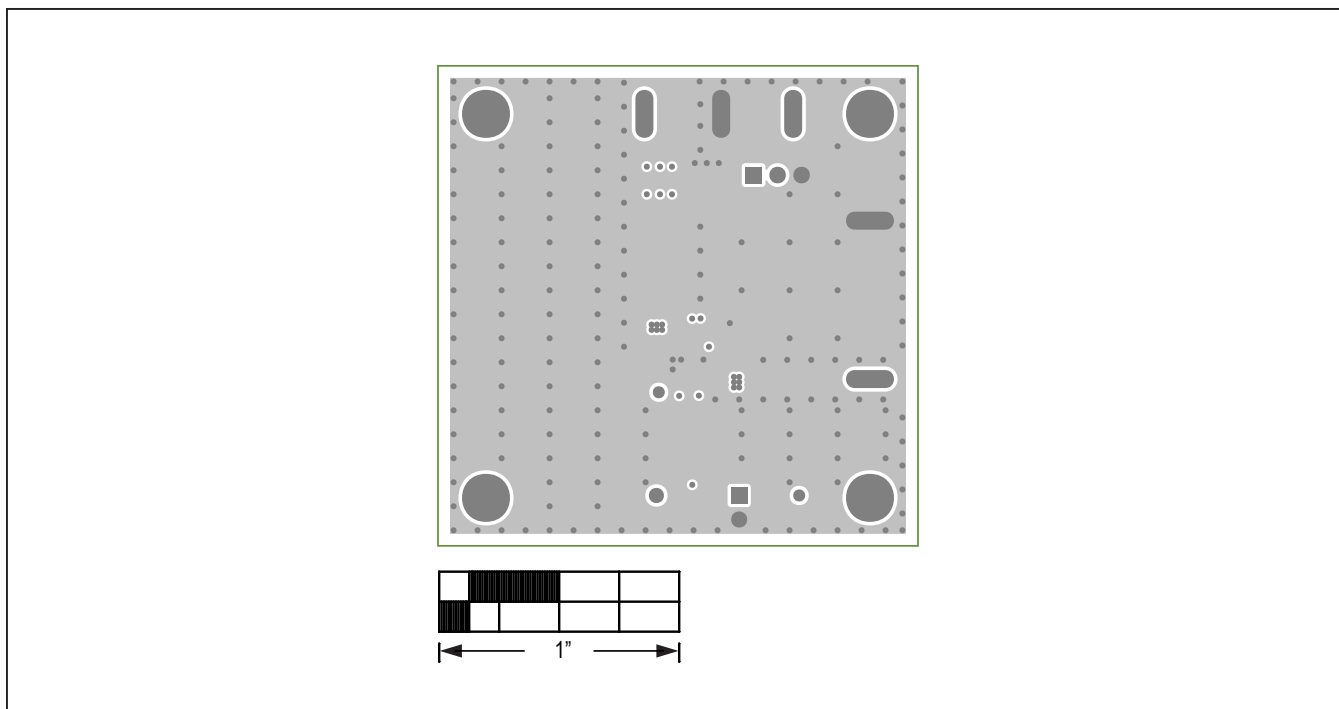


MAXM17901 EV Kit PCB Layout—Silk Top

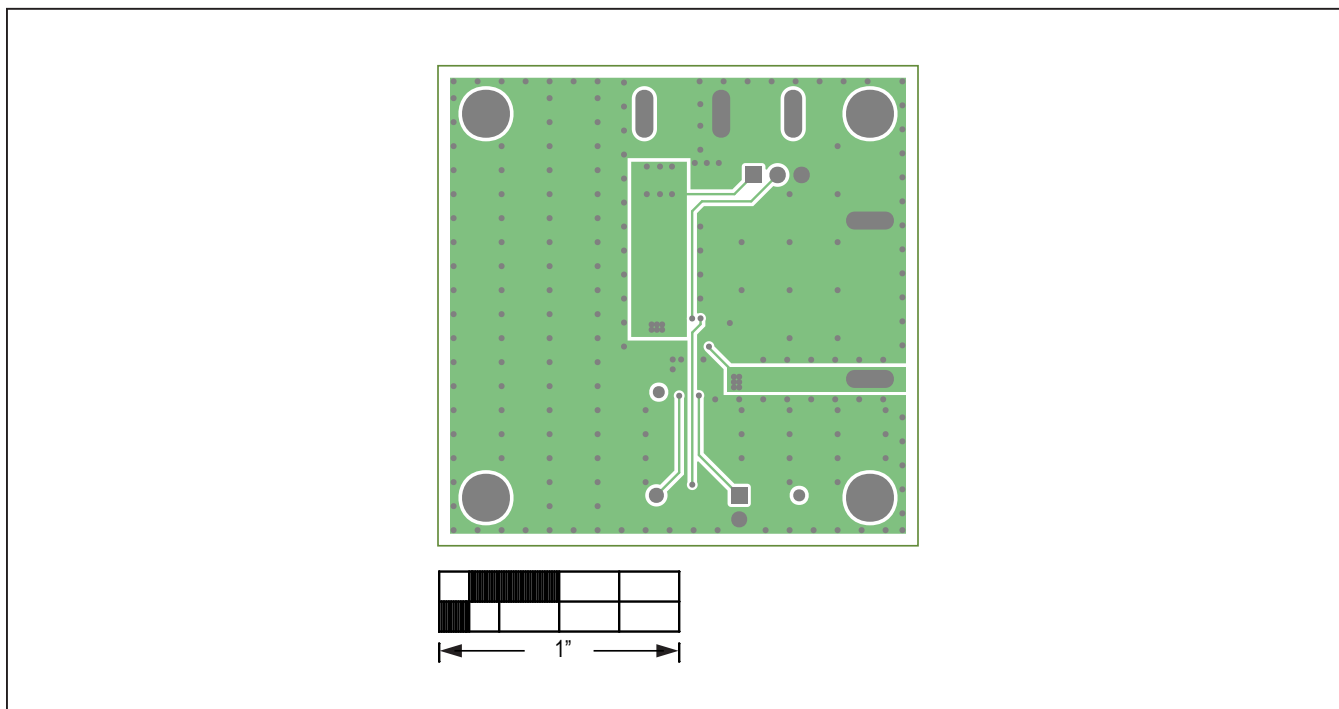


MAXM17901 EV Kit PCB Layout—Top Layer

MAXM17901 3.3V EV Kit PCB Layout Diagrams (continued)

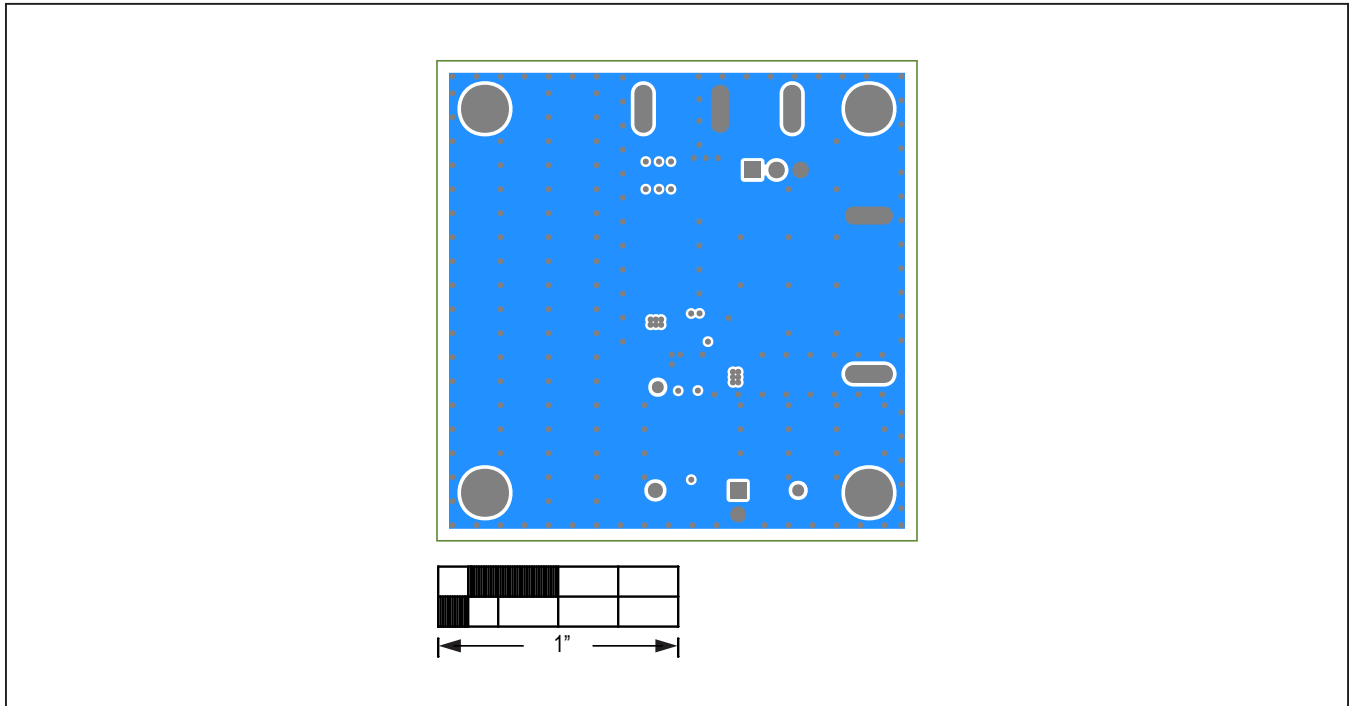


MAXM17901 EV Kit PCB Layout—Layer 2 Ground



MAXM17901 EV Kit PCB Layout—Layer 3 Power

MAXM17901 3.3V EV Kit PCB Layout Diagrams (continued)



MAXM17901 EV Kit PCB Layout—Bottom Layer

Revision History

| REVISION NUMBER | REVISION DATE | DESCRIPTION | PAGES CHANGED |
|-----------------|---------------|-----------------|---------------|
| 0 | 3/19 | Initial release | — |

For pricing, delivery, and ordering information, please visit Maxim Integrated's online storefront at <https://www.maximintegrated.com/en/storefront/storefront.html>.

Maxim Integrated cannot assume responsibility for use of any circuitry other than circuitry entirely embodied in a Maxim Integrated product. No circuit patent licenses are implied. Maxim Integrated reserves the right to change the circuitry and specifications without notice at any time.