

HC-STA-B06PT-BWSC-LS-M20-ELCAL - Connector set



1416353

<https://www.phoenixcontact.com/us/products/1416353>

Please be informed that the data shown in this PDF document is generated from our Online Catalog. Please find the complete data in the user documentation. Our General Terms of Use for Downloads are valid.

Connector set, number of positions: 6, connection method: Push-in connection, connection cross section: AWG 26- 14, cable outlet: lateral



Commercial Data

Item number	1416353
Packing unit	1 pc
Minimum order quantity	1 pc
Sales Key	BF63
Product Key	BF7AFX
Catalog Page	Page 647 (C-2-2019)
GTIN	4055626071244
Weight per Piece (including packing)	396.4 g
Weight per Piece (excluding packing)	390 g
Customs tariff number	85366990
Country of origin	CN

HC-STA-B06PT-BWSC-LS-M20-ELCAL - Connector set



1416353

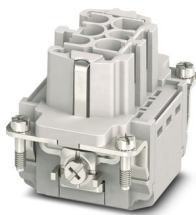
<https://www.phoenixcontact.com/us/products/1416353>

Set consists of

HC-B06-I-PT-F - Contact insert

1407727

<https://www.phoenixcontact.com/us/products/1407727>

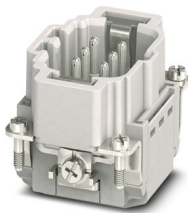


Contact insert, number of positions: 6+PE, size: B6, number of connections per position: 1, Socket, Push-in connection, 500 V, 16 A, 0.14 mm² ... 2.5 mm², application: Power

HC-B06-I-PT-M - Contact insert

1407728

<https://www.phoenixcontact.com/us/products/1407728>



Contact insert, number of positions: 6+PE, size: B6, number of connections per position: 1, Pin, Push-in connection, 500 V, 16 A, 0.14 mm² ... 2.5 mm², application: Power

HC-STA-B06PT-BWSC-LS-M20-ELCAL - Connector set



1416353

<https://www.phoenixcontact.com/us/products/1416353>

G-INS-M20-S68N-NNES-S - Cable gland

1411163

<https://www.phoenixcontact.com/us/products/1411163>



Cable gland, material for screw connection: Nickel-plated brass, external cable diameter 6 mm ... 12 mm, shielding: no, connecting thread: M20 x 1.5, color: silver, with O-ring

HC-STA-B06-BWSC-ELC-AL - Housing

1411319

<https://www.phoenixcontact.com/us/products/1411319>



Panel mounting base B6, with single locking latch, material: Die-cast aluminum, salt water resistant, protective cover material: PC, height: 30.5 mm, cable gland: none, protective cover: yes, Standard, with flat gasket

HC-STA-B06PT-BWSC-LS-M20-ELCAL - Connector set



1416353

<https://www.phoenixcontact.com/us/products/1416353>

HC-STA-B06-HLFS-1STM20-EL-AL - Housing

1412570

<https://www.phoenixcontact.com/us/products/1412570>



Sleeve housing B6, for single locking latch, material: Die-cast aluminum, salt water resistant, cable outlets: 1, lateral, 1x M20, height: 52 mm, cable gland: none, Standard

HC-STA-B06PT-BWSC-LS-M20-ELCAL - Connector set



1416353

<https://www.phoenixcontact.com/us/products/1416353>

Technical Data

Product properties

Type	B6
Product type	Connector set
Number of positions	6
Connection profile	6+PE
Application	Standard
No. of cable outlets	1
Housing type	Complete housing
Seal present	yes
Protective cover	yes
Locking type	Single locking latch
Series	HC-B
Cable outlet	lateral

Insulation characteristics

Overvoltage category	III
Degree of pollution	3

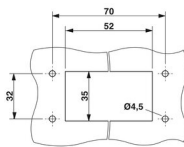
Electrical properties

Rated voltage (III/3)	500 V
Rated surge voltage	6 kV
Rated current	16 A

Connection data

Connection method	Push-in connection
Connection technology	Push-in connection
Conductor cross section	0.14 mm ² ... 2.5 mm ² (with ferrule) 0.14 mm ² ... 2.5 mm ² (with ferrule)
Connection cross section AWG	26 ... 14
Tightening torque	0.5 Nm ... 1.7 Nm (Fixing screws for panel mounting base)
Stripping length	8 mm ... 10 mm

Dimensions

Dimensional drawing	
Width	53 mm
Height	82.5 mm
Length	80.5 mm
Drill hole distance, horizontal	70 mm

HC-STA-B06PT-BWSC-LS-M20-ELCAL - Connector set



1416353

<https://www.phoenixcontact.com/us/products/1416353>

Drill hole distance, vertical	32 mm
Hole diameter	4.5 mm

Installation dimensions

Width of the assembly cutout	35 mm
Length of the assembly cutout	52 mm

Material specifications

Flammability rating according to UL 94	V0
Seal material Profile gasket	NBR, conductive
Seal material Flat gasket	NBR, conductive
Contact material	Copper alloy
Contact surface material	Ag
Contact carrier material	PC
Locking latch material	PA
Impact strength	IK08

Cable/line

External cable diameter	6 mm ... 12 mm
	10 mm ... 12 mm (for UL 514 B)

Mechanical properties

Mechanical data

Locking type	Latch
Insertion/withdrawal cycles	≥ 500

Environmental and real-life conditions

Ambient conditions

Degree of protection	IP66 (with locked protective cover)
	IP67 (when plugged in)
Impact strength	IK08
Ambient temperature (operation)	-40 °C ... 100 °C

Mounting

Mounting type	Screw mounting
Assembly instructions	Coding also using the CP-HC (1686478) coding profiles. HC-B6.. / HC-B10..for two coding profiles. HC-B16.. / HC-B24..for four coding profiles.
	Connectors may only be operated when there is no load/the power is switched off. Can be used for solid wires and stranded wires with ferrule.
Connection method	Push-in connection

HC-STA-B06PT-BWSC-LS-M20-ELCAL - Connector set

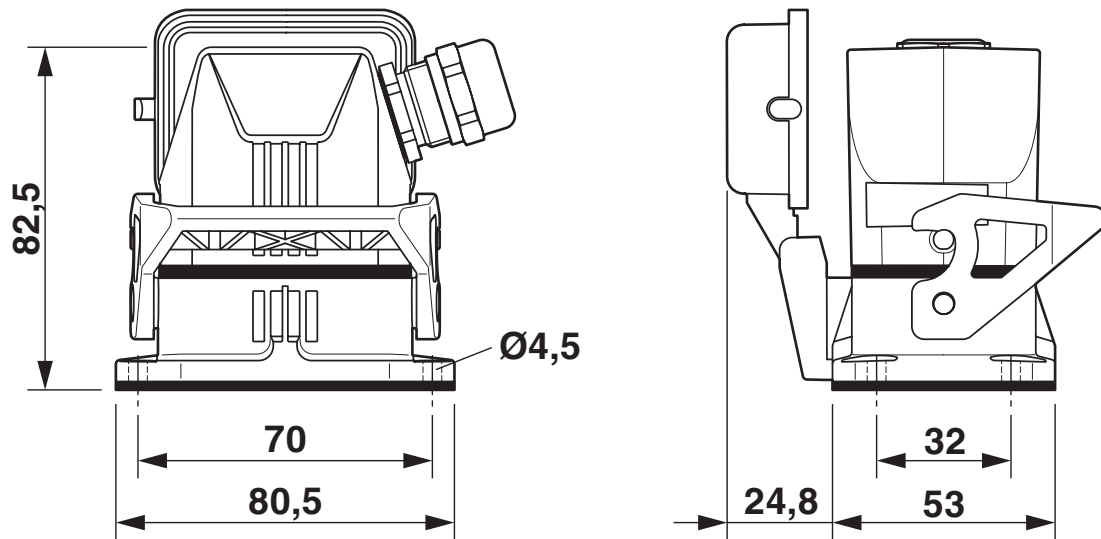


1416353

<https://www.phoenixcontact.com/us/products/1416353>

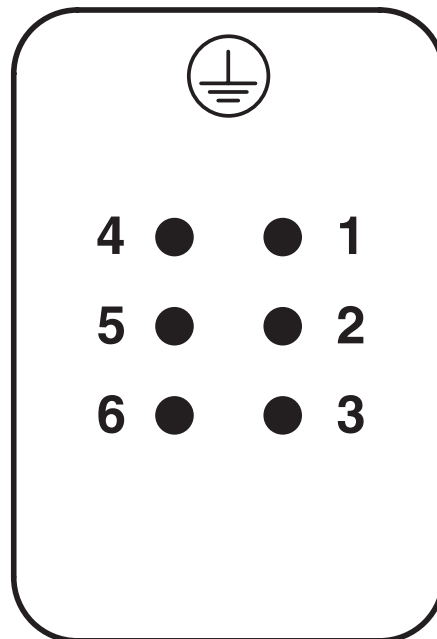
Drawings

Dimensional drawing



Dimensional drawing

Schematic diagram



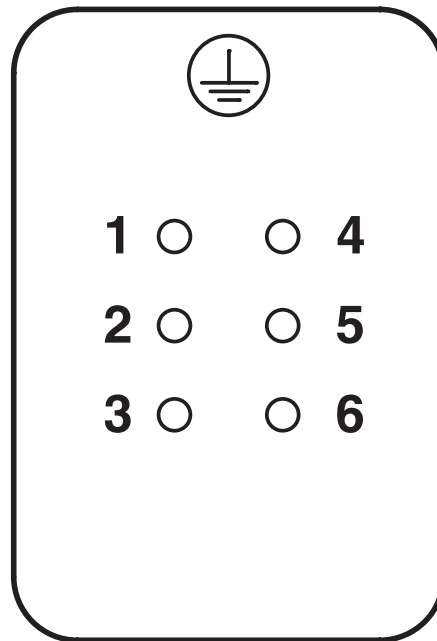
Pin assignment, connection side, pin

HC-STA-B06PT-BWSC-LS-M20-ELCAL - Connector set

1416353

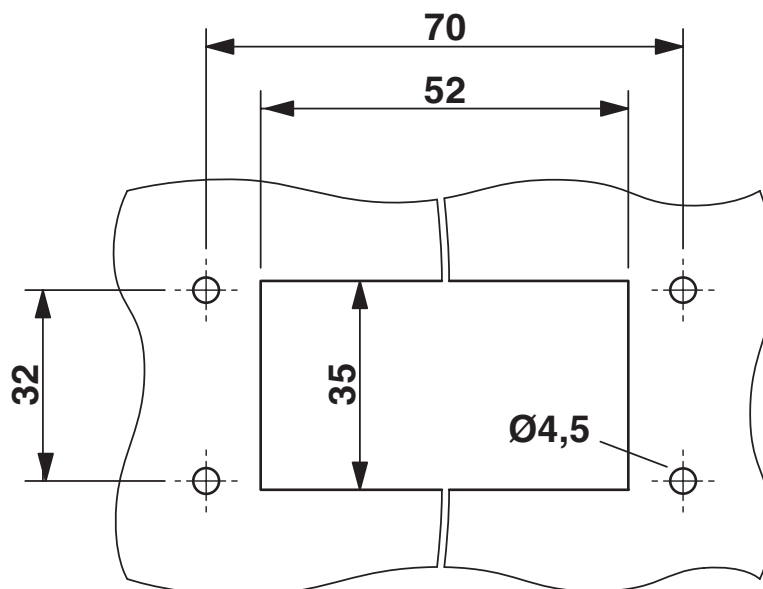
<https://www.phoenixcontact.com/us/products/1416353>

Schematic diagram



Pin assignment, connection side, socket

Dimensional drawing



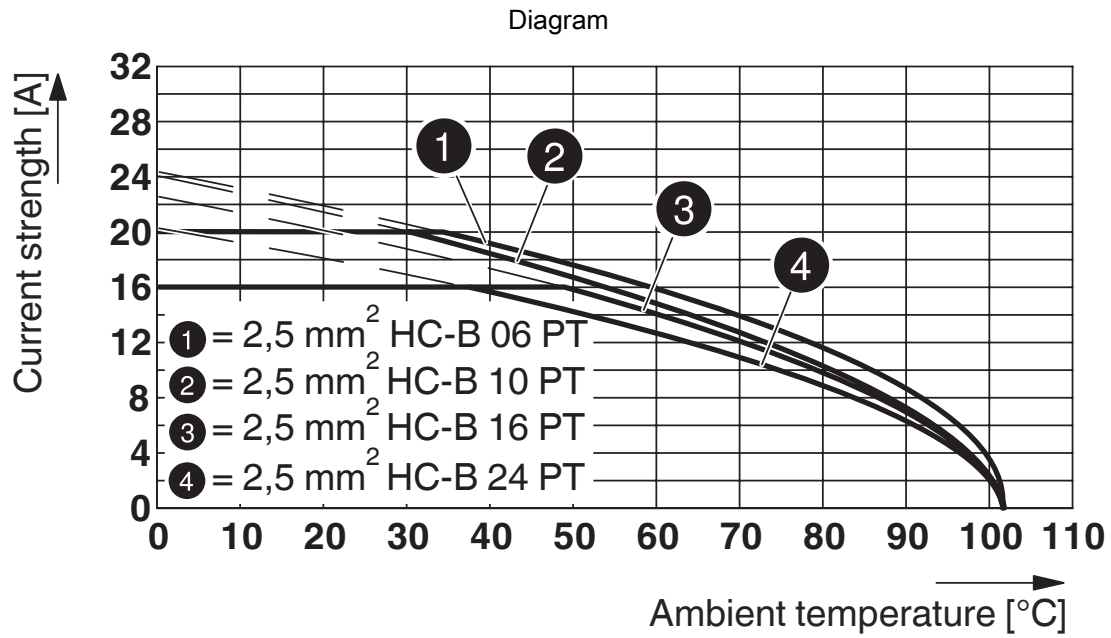
Mounting cutout

HC-STA-B06PT-BWSC-LS-M20-ELCAL - Connector set



1416353

<https://www.phoenixcontact.com/us/products/1416353>



Derating diagram

HC-STA-B06PT-BWSC-LS-M20-ELCAL - Connector set



1416353

<https://www.phoenixcontact.com/us/products/1416353>

Approvals

To download certificates, visit the product detail page: <https://www.phoenixcontact.com/us/products/1416353>



EAC

Approval ID: RU C-DE.AI30.B.01102



EAC

Approval ID: RU C-DE.BL08.B.00511

HC-STA-B06PT-BWSC-LS-M20-ELCAL - Connector set



1416353

<https://www.phoenixcontact.com/us/products/1416353>

Classifications

ECLASS

ECLASS-11.0	27440101
ECLASS-12.0	27440113
ECLASS-13.0	27440113

ETIM

ETIM 8.0	EC002636
----------	----------

UNSPSC

UNSPSC 21.0	39121400
-------------	----------

HC-STA-B06PT-BWSC-LS-M20-ELCAL - Connector set



1416353

<https://www.phoenixcontact.com/us/products/1416353>

Environmental Product Compliance

REACH SVHC	Lead 7439-92-1
China RoHS	Environmentally Friendly Use Period = 50 years
	For information on hazardous substances, refer to the manufacturer's declaration available under "Downloads"

HC-STA-B06PT-BWSC-LS-M20-ELCAL - Connector set



1416353

<https://www.phoenixcontact.com/us/products/1416353>

Accessories

US-EMLP-HA (20X9) - Plastic label

0830989

<https://www.phoenixcontact.com/us/products/0830989>

Plastic label, Card, white, unlabeled, can be labeled with: BLUEMARK ID COLOR, BLUEMARK ID, THERMOMARK PRIME, THERMOMARK CARD 2.0, THERMOMARK CARD: without print, mounting type: adhesive, lettering field size: 20 x 9 mm, Number of individual labels: 70



Phoenix Contact 2023 © - all rights reserved
<https://www.phoenixcontact.com>

Phoenix Contact USA
586 Fulling Mill Road
Middletown, PA 17057, United States
(+717) 944-1300
info@phoenixcon.com