

# RM Cores (6278280121)

Part Number: 6278280121

78 RM CORE SET

RM (Rectangular Modulus) cores allow better shielding than E type geometries while also providing easier winding accessibility and better power dissipation than a pot core configuration. Fair-Rite's standard RM cores all have a solid center post and standard height, low profile and alternate materials are available upon request.

□ RM cores can be supplied with the center post gapped to a mechanical dimension or an  $A_L$  value.

[Catalog Drawing](#)

[3D Model](#)

Weight indicated is per pair or set.

Weight: 22 (g)

Dim	mm	mm tol	nominal inch	inch misc.
A	27.8	± 0.60	1.094	—
B	9.3	± 0.15	0.366	—
C	13.25	± 0.25	0.522	—
D	6.4	± 0.20	0.252	—
E	21.65	± 0.45	0.852	—
F	10.65	± 0.20	0.419	—
G	12.5	min	0.493	min
J	24.15	± 0.55	0.951	—

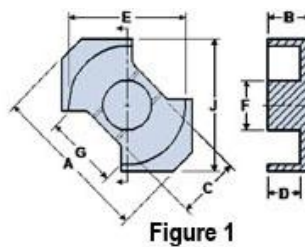



Figure 1

### Chart Legend

$\Sigma l / A$  : Core Constant,  $l_e$  : Effective Path Length,  $A_e$  : Effective Cross- Sectional Area,  $V_e$  : Effective Core Volume

$A_L$  : Inductance Factor 

Explanation of Part Numbers: Digits 1 & 2 = product class and 3 & 4 = material grade.

Electrical Properties	
$A_L$ (nH)	4200 ±25%
$A_e$ (cm <sup>2</sup> )	0.898
$\Sigma l / A$ (cm <sup>-1</sup> )	5.3
$l_e$ (cm)	4.79
$V_e$ (cm <sup>3</sup> )	4.306
$A_{min}$ (cm <sup>2</sup> )	0.884

$A_L$  value is measured at 1 kHz, B < 10 gauss.

# Mouser Electronics

Authorized Distributor

Click to View Pricing, Inventory, Delivery & Lifecycle Information:

[Fair-Rite:](#)

[6278280121](#)