

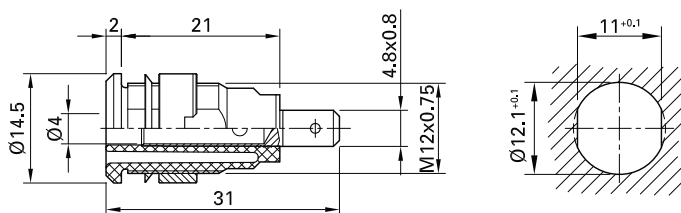
Panel-mount socket SLB4-F-...

Insulated, rigid, Ø 4 mm, accepting spring-loaded Ø 4 mm plugs with rigid insulating sleeve. Machined brass. The socket

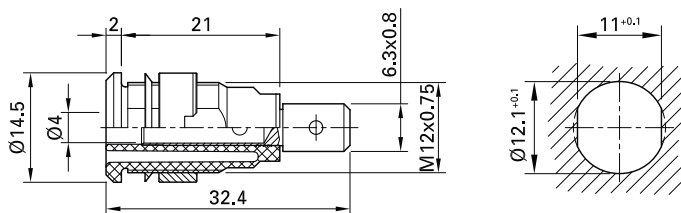
is screwed into pre-drilled panels of plastic, metal, etc.

Connection: Flat connecting tab.

SLB4-F



SLB4-F6,3



Order No.	Type	Rated voltage/current	Connection		*Standard colors										
23.3000-*	SLB4-F	1000 V, CAT III / 24 A 600 V, CAT IV / 24 A	Flat connecting tab 4.8 mm x 0.8 mm	Au c us	<table border="1"> <tr><td>20</td><td>21</td><td>22</td><td>23</td><td>24</td></tr> <tr><td>25</td><td>26</td><td>27</td><td>28</td><td>29</td></tr> </table>	20	21	22	23	24	25	26	27	28	29
20	21	22	23	24											
25	26	27	28	29											
49.7044-*	SLB4-F/N-X	1000 V, CAT III / 24 A 600 V, CAT IV / 24 A	Flat connecting tab 4.8 mm x 0.8 mm	Ni c us	<table border="1"> <tr><td>20</td><td>21</td><td>22</td><td>23</td><td>24</td></tr> <tr><td>25</td><td>26</td><td>27</td><td>28</td><td>29</td></tr> </table>	20	21	22	23	24	25	26	27	28	29
20	21	22	23	24											
25	26	27	28	29											
23.3060-*	SLB4-F6,3	1000 V, CAT III / 32 A 600 V, CAT IV / 32 A	Flat connecting tab 6.3 mm x 0.8 mm	Au c us	<table border="1"> <tr><td>20</td><td>21</td><td>22</td><td>23</td><td>24</td></tr> <tr><td>25</td><td>26</td><td>27</td><td>28</td><td>29</td></tr> </table>	20	21	22	23	24	25	26	27	28	29
20	21	22	23	24											
25	26	27	28	29											
49.7046-*	SLB4-F6,3/N-X	1000 V, CAT III / 32 A 600 V, CAT IV / 32 A	Flat connecting tab 6.3 mm x 0.8 mm	Ni c us	<table border="1"> <tr><td>20</td><td>21</td><td>22</td><td>23</td><td>24</td></tr> <tr><td>25</td><td>26</td><td>27</td><td>28</td><td>29</td></tr> </table>	20	21	22	23	24	25	26	27	28	29
20	21	22	23	24											
25	26	27	28	29											

Component parts

23.6999-*	BI-SLB4-F	Socket SLB4-F without nut	
49.7031-*	BI-SLB4-F/N	Socket SLB4-F/N-X without nut	
23.7222-*	BI-SLB4-F6,3	Socket SLB4-F6,3 without nut	
23.3040-*	BI-SLB4-F6,3N	Socket SLB4-F6,3N-X without nut	
23.5120	MUR/M12x0,75	Round nut, suitable for SLB4-F, SLB4-F/N-X, SLB4-F6,3, SLB4-F6,3/N-X	Page 149
23.5108	SSP4	Washer, suitable for SLB4-F, SLB4-F6,3	Page 149



Assembly instructions MA165

www.staubli.com/electrical



Flat connecting receptacles FSH..., page 152

Tube spanners SS2, SS425, page 152