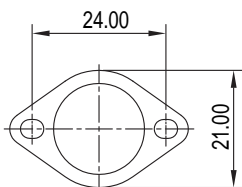




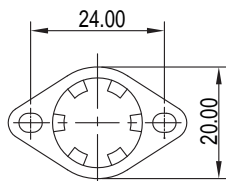
Bracket: Loosen
Material: Stainless Steel

Bracket: Fixed
Material: Stainless Steel

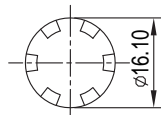
Bracket: Fixed
Material: Stainless Steel



Type 0

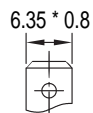


Type B

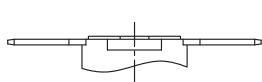


Type C

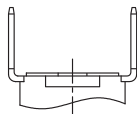
TERMINAL SIZE:



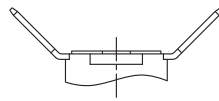
TERMINAL ORIENTATION:



Type A



Type U



Type T

Contact status when temperature rise to Set point:

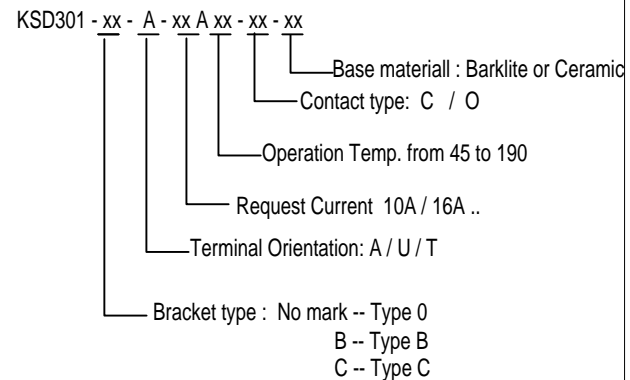
C -- Normally Closed

O -- Normally Open

ELECTRICAL:

1. Rate Voltage : AC 125 / 250V
2. Rate Current: 10A 15A (Made according to customer request)
3. Contact Resistane: 50MΩ Max.
4. Insulation Resistance: 500V DC 1min ≥100MΩ
5. Withs tand Voltage: 1500V AC/1min , leakage current ≤0.5mA
6. Operation Temp.: 50 - 175 °C
7. Differential : 10 - 30K (15K Standard)
8. Temp Tolerance : Operating Temp +- 3K +-5K
9. Heat Durability: 220°C Max
10. Dielectric Strength: AC 1000V for 1 Min.
11. Operating Life: 100000 Cycles (10A / 250V)

HOW TO ORDER:



YUHUI ELECTRONIC TECH. CO.,LTD.

GENERAL TOLERANCE

X.* ± 5.0°	X. ± 0.30
.X* ± 3.0°	.X ± 0.25
.XX* ± 2.0°	.XX ± 0.15
.XXX* ± 1.0°	.XXX ± 0.10

DESIGN: 黄 语 惠

DATE: 2020.02.28

DWG. NO.:

KSD301- 001A- 0002

TITLE:

KSD301 Series

CHECK: 忠 诚

DATE: 2020.03.02

PART NO.:

KSD301-A-10A85-C-Barklite

AUDIT: 忠 诚

DATE: 2020.03.02

APPROVE: 忠 诚

DATE: 2020.03.02

REV.: 01	UNIT.: mm	SCALE.: 1:1	PAGE.: 1/1	
--------------------	---------------------	-----------------------	----------------------	--