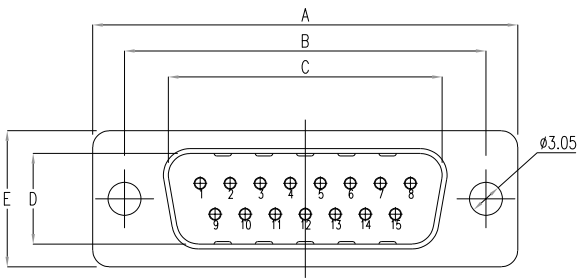
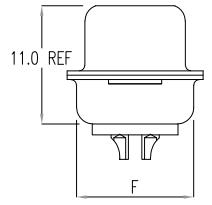
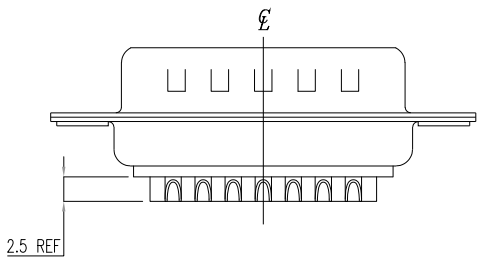


DESCRIPTION: MALE - SOLDER CUP / MACHINED - ECONOMY



DIMENSIONS(mm)						
SIZE	A <sup>+0.39</sup> <sub>-0.39</sub>	B <sup>+0.25</sup> <sub>-0.25</sub>	C <sup>+0.25</sup> <sub>-0.25</sub>	D <sup>+0.25</sup> <sub>-0.34</sub>	E <sup>+0.38</sup> <sub>-0.38</sub>	F <sup>+0.25</sup> <sub>-0.25</sub>
9	30.81	24.99	16.92	8.36	12.55	10.80
15	39.19	33.32	25.25	8.36	12.55	10.80
25	53.04	47.04	38.96	8.36	12.55	10.80
37	69.32	63.50	55.42	8.36	12.55	10.80
50	67.00	61.10	52.80	11.26	15.40	13.30

WILL ACCEPT 26-20 AWG WIRE



**MATERIAL:**

- SHELL: NICKEL OR TIN PLATED STEEL
- INSULATOR: PA6T, UL 94 V-0
- PROCESS TEMP.: 260°C
- CONTACT: BRASS

**ELECTRICAL:**

- CURRENT RATING: 5 AMPS
- CONTACT RESISTANCE: 15 mOhms Max.
- INSULATION RESISTANCE: 1,000 MOhms min.
- VOLTAGE: 500VAC FOR 1 MINUTE
- TEMPERATURE: -55° C TO 125° C

RoHS COMPLIANT

**172-EYY-10YRYY1**

SERIES \_\_\_\_\_

POSITIONS \_\_\_\_\_

- E09
- E15
- E25
- E37
- E50

GENDER \_\_\_\_\_

- 1 = MALE

TERMINATION \_\_\_\_\_

- 0 = SOLDER CUP

SHELL PLATING \_\_\_\_\_

- 2 = TIN (N/A FOR HW "01" / "02" / "03")
- 3 = NICKEL (GROUND INDENTS)

RoHS COMPLIANT \_\_\_\_\_

HARDWARE OPTIONS \_\_\_\_\_

- 00 = NO HARDWARE
- 01 = .098" CLINCH NUT (SOLDER SIDE)
- 02 = .236" CLINCH NUT (SOLDER SIDE)
- 03 = .236" CLINCH NUT (MATING SIDE)
- 05 = .237" 4-40 BOARD LOCK
- 91 = .237" 4-40 SPACER/ BOARD LOCK

PLATING OPTIONS \_\_\_\_\_

- 1 = GOLD FLASH
- 2 = 30µ" GOLD

UNITS = mm

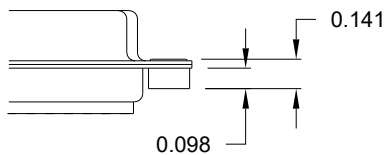
DO NOT SCALE FROM DRAWING

	THESE DRAWINGS AND SPECIFICATIONS ARE THE PROPERTY OF NorComp AND SHALL NOT BE REPRODUCED, COPIED OR USED AS THE BASIS FOR THE MANUFACTURE OF SALE OF APPARATUS WITHOUT WRITTEN PERMISSION.		DRAWN: <b>PAM JENKINS</b>	DATE: <b>11-28-05</b>
	<h1>NorComp</h1>		SCALE: <b>NTS</b>	SHEET <b>1</b> OF <b>2</b>
			REV <b>15</b>	
			DWG NO. <b>172-EYY-10YRYY1</b>	

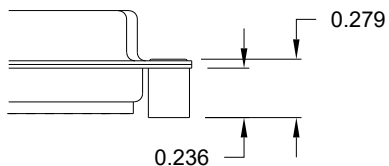
**TOLERANCE:**  
ALL DIMENSIONS ARE ±0.010

**ALL CLINCH-NUTS ARE 4-40 INTERNAL THREADS**

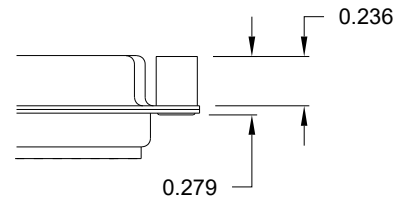
01X ..... 0.098" (SOLDER SIDE)



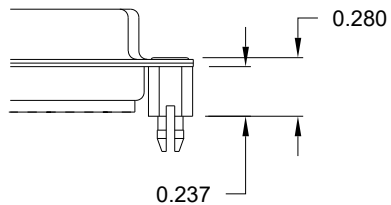
02X ..... 0.236" (SOLDER SIDE)



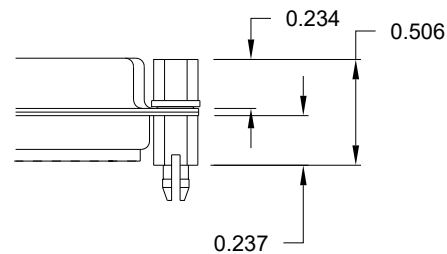
03X..... 0.236" (MATING SIDE)



05X ..... 0.237" (SOLDER SIDE)



91X ..... 0.237" (SOLDER SIDE)



NOTE: 4-40 FEMALE SCREW LOCK IS REMOVABLE

UNITS = INCH

DO NOT SCALE FROM DRAWING



THESE DRAWINGS AND SPECIFICATIONS ARE THE PROPERTY OF NorComp AND SHALL NOT BE REPRODUCED, COPIED OR USED AS THE BASIS FOR THE MANUFACTURE OF SALE OF APPARATUS WITHOUT WRITTEN PERMISSION.

DRAWN:  
**PAM JENKINS**

DATE:  
**11-28-05**

**NorComp**

SCALE: **NTS** SHEET **2** OF **2** REV **15**

DWG NO. **172-EYY-10YRY1**

**RoHS COMPLIANT**

# Mouser Electronics

Authorized Distributor

Click to View Pricing, Inventory, Delivery & Lifecycle Information:

## NorComp:

<a href="#"><u>172-E50-103R021</u></a>	<a href="#"><u>172-E50-103R011</u></a>	<a href="#"><u>172-E50-103R031</u></a>	<a href="#"><u>172-E25-103R021</u></a>	<a href="#"><u>172-E25-103R011</u></a>	<a href="#"><u>172-E25-103R031</u></a>
<a href="#"><u>172-E15-103R031</u></a>	<a href="#"><u>172-E15-103R011</u></a>	<a href="#"><u>172-E15-103R021</u></a>	<a href="#"><u>172-E25-103R911</u></a>	<a href="#"><u>172-E37-103R911</u></a>	<a href="#"><u>172-E50-103R911</u></a>
<a href="#"><u>172-E09-103R011</u></a>	<a href="#"><u>172-E09-103R031</u></a>	<a href="#"><u>172-E09-103R021</u></a>	<a href="#"><u>172-E37-103R021</u></a>	<a href="#"><u>172-E37-103R011</u></a>	<a href="#"><u>172-E37-103R031</u></a>
<a href="#"><u>172-E50-103R001</u></a>	<a href="#"><u>172-E25-103R001</u></a>	<a href="#"><u>172-E15-103R001</u></a>	<a href="#"><u>172-E09-103R001</u></a>	<a href="#"><u>172-E37-103R001</u></a>	<a href="#"><u>172-E09-103R911</u></a>
<a href="#"><u>172-E09-102R001</u></a>	<a href="#"><u>172-E09-102R011</u></a>	<a href="#"><u>172-E09-102R021</u></a>	<a href="#"><u>172-E09-102R031</u></a>	<a href="#"><u>172-E15-102R001</u></a>	<a href="#"><u>172-E15-102R011</u></a>
<a href="#"><u>172-E15-102R021</u></a>	<a href="#"><u>172-E15-102R031</u></a>	<a href="#"><u>172-E25-102R001</u></a>	<a href="#"><u>172-E25-102R011</u></a>	<a href="#"><u>172-E25-102R021</u></a>	<a href="#"><u>172-E25-102R031</u></a>
<a href="#"><u>172-E37-102R001</u></a>	<a href="#"><u>172-E37-102R011</u></a>	<a href="#"><u>172-E37-102R021</u></a>	<a href="#"><u>172-E37-102R031</u></a>	<a href="#"><u>172-E50-102R001</u></a>	<a href="#"><u>172-E50-102R011</u></a>
<a href="#"><u>172-E50-102R021</u></a>	<a href="#"><u>172-E50-102R031</u></a>	<a href="#"><u>172-E15-103R911</u></a>			