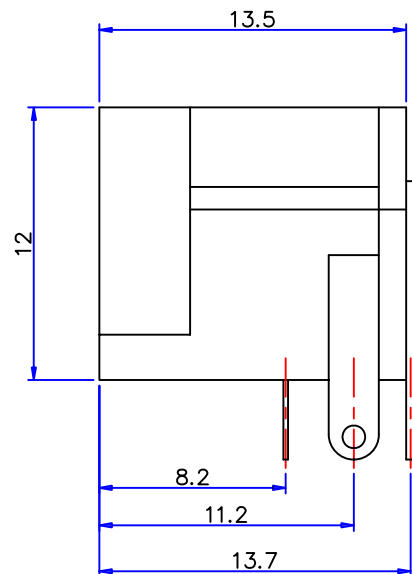
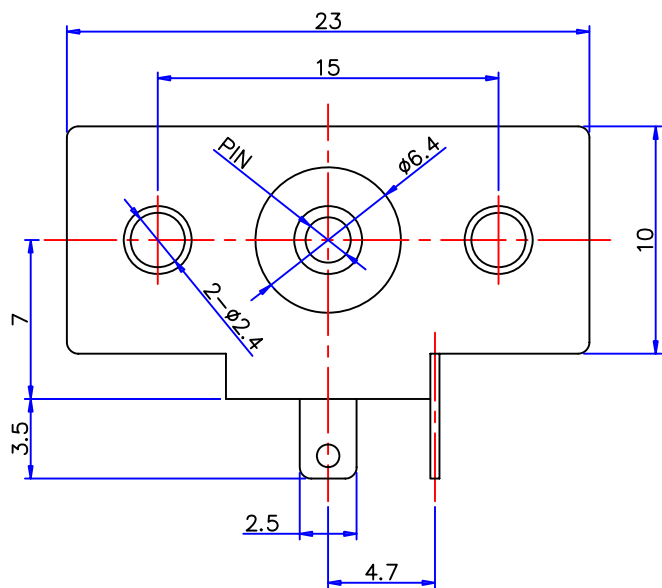
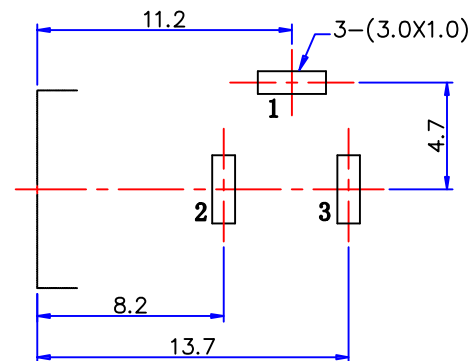


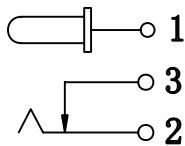
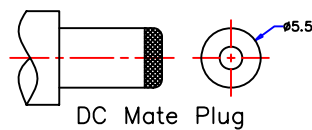
RoHS
Compliant
Drawing For
Reference Only



P.C.B Layout (Copper-Side View)



Circuit Diagram



Model No.	DS-221A(NB)	DS-221B(NB)
Pin	ø2.5	ø2.0

6	Cover	1	PBT	----
5	Housing	1	PBT	----
4	Pin	1	Brass	Ni
3	Flat Piece	1	Brass	Sn
2	Curve Piece	1	Brass	Sn
1	Spring	1	Stainless Steel	Sn
No.	Description	QTY	Material	Plating

Specification

- 1, Rating : DC 30V 0.5A
- 2, Contact Resistance : $\leq 50\text{m}\Omega$
- 3, Insulation Resistance : $\geq 100\text{M}\Omega(\text{DC}250\text{V})$
- 4, Withstand Voltage : 500VAC
- 5, Insertion And Extraction Force : 3-25N
- 6, Life Test : 5,000 Cycles

Technical requirement :

1. This product should meet EU RoHS related requirement.
2. The surface of plastic part should be without any crackle such as burr,lack,and so on phenomenon.
3. The surface of metal part should be without any defect such as scaur,nick,oxidation and plating problem.
4. The electronic performance should be the same as spec.
5. The un-specified tolerance is : $<6\pm 0.2$
 $6\sim 20\pm 0.3$
 $>20\pm 0.4$

DCI DRAGON CITY INDUSTRIES LIMITED

Design	K.W Law	Remark	Scale
Drawing	W.K Yeung	Remark	Material
Check	K.L Wong	Remark	Drawing No. 100830-1705
Approval	K.W Chan	Remark	Sheet

Item Name	DC Power Jack Board	Tolerance :
Item No.	DS-221(NB)	Unit : mm