

US-257 - USB 2 Port RS232 1MBaud

CONNECT, CONFIGURE, CONTROL YOUR SERIAL DEVICES

Features



- 2 port RS232
- 128 Byte Tx and 384 Byte Rx FIFOs
- Up to 921,600 Baud
- DB9 Connector - 9 Pin Male connector (9 Pin Male)
- IP-30 rated enclosure
- Drivers for all popular operating systems
- LED status indication
- Supplied with USB cable
- Supplied with rubber feet for office environment
- Optional DIN rail mounting kits
- Lifetime Warranty* and Lifetime Support

* Registration required

Description

USB to Serial adapter providing two RS232 serial ports. Data transfer rates up to 921,600 baud rates and the 128 byte transmit and 384 byte receive FIFOs, coupled with 1Mbit line drivers deliver uncompromising performance on your laptop/PC. Drivers for Windows 32 bit and 64 bit Operating Systems including Windows XP, Server 2003, Vista, Server 2008, Windows 7 and Windows 8 with additional drivers for both Mac OS X and Linux.

USB to serial is the quick low cost way to connect your computer to a serial comms enabled device. Boost software gives industry leading functionality and compatibility.

These products do away with traditional issues with USB technology so you can buy with confidence!

With Brainboxes industry renowned Lifetime Warranty and Lifetime Support!

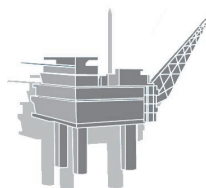
Example Application



CNC Machine



Point of Sale



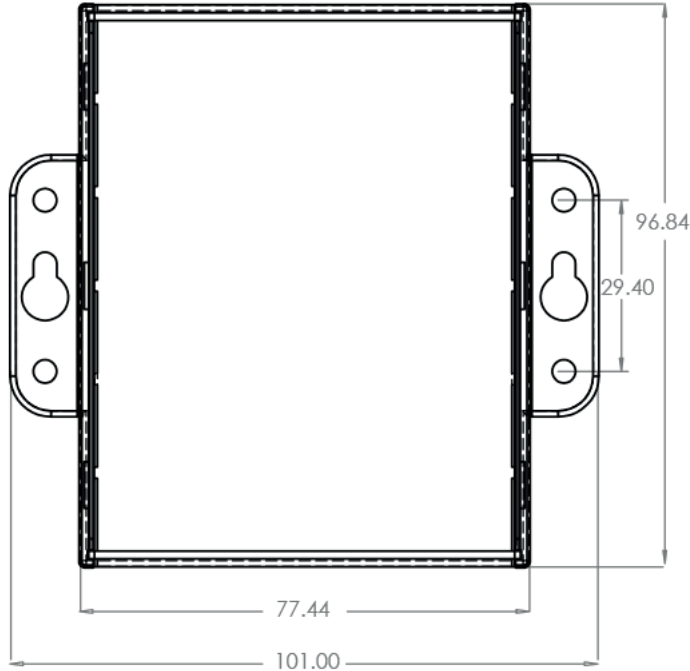
Oil Rig



Laboratory

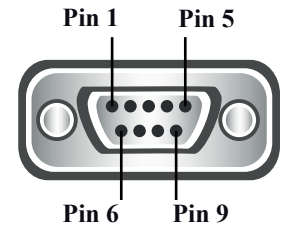
US-257 - USB 2 Port RS232 1MBaud

Box Information



Pin 1	DCD
Pin 2	RXD
Pin 3	TXD
Pin 4	DTR
Pin 5	GND
Pin 6	DSR
Pin 7	RTS
Pin 8	CTS
Pin 9	RI

RS232 Pinout (9 Pin Male)



Device Dimensions

Size - 100l x 102w x 27h mm

LED Information

Status LED	Green	Power On
Serial Port LEDs	Green light on	Data TX
	Green light on	Data RX

Port

Ports	2 x RS232
Connector	DB9 Connector - 9 Pin Male connector (9 Pin Male)
FIFO Size	384 RX FIFO + 128 TX FIFO
Operating Distance	EIA - RS232 Standard
Cable	USB cable Type A to B 1 metre 3ft

US-257 - USB 2 Port RS232 1MBaud

Port Settings

Baud Rate	921,600
Data Bits	7 or 8
Parity	Odd, Even, None, Mark or Space
Stop Bits	1 or 2
Flow Control	RTS/CTS, DSR/DTR, XON/XOFF
Tx/Rx Modes	Point to Point

Product Information

Power Consumption	100mA @ 3.3V
Product Weight	0.109 kg

Interface

OS Compatibility	Microsoft Windows 8 32 bit 64 bit Editions Microsoft Windows 7 32 bit 64 bit Editions Windows Server 2008 32 bit 64 bit Editions Windows Vista 32 bit 64 bit Editions
BUS	USB 2.0



Approvals

Industry Approvals	Microsoft Certified Gold Partner WEEE RoHS
Microsoft Approvals	AEO C-TPAT
Microsoft Signed Drivers	Windows 8 32 bit 64 bit Editions Windows 7 32 bit 64 bit Editions Windows Vista 32 bit 64 bit editions Windows XP 32 bit 64 bit editions



Packing Information

Packaging	Installation CD including manual, Microsoft signed drivers & utilities
Device	USB 2 Port RS232 1MBaud
Optional Extras	DIN-Rail Mounting Kit - MK-048 Power through USB, no extra power supplied required Power through USB, no extra power supplied required
Packaged Weight	0.325 kg
Packaged Dims	160l x 135w x 45h mm

Product Support

Warranty	Lifetime - online registration required
Support	Lifetime Web, Email and Phone Support from fully qualified, friendly staff who work in and alongside the Product Development Team



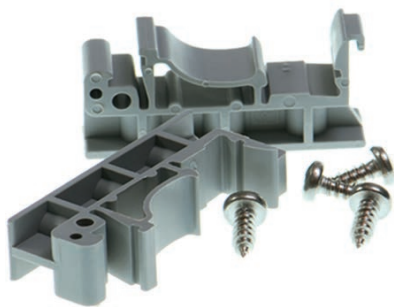
US-257 - USB 2 Port RS232 1MBaud

Additional Information

OEM option	Available for bulk buy OEM
Made In	Manufactured in the UK by Brainboxes Winner 2005 European Electronics Industry Awards 'Manufacturer of the Year'
Customisable	Brainboxes operate a 'Perfect Fit Custom Design' policy for volume users. More info: sales@brainboxes.com

Optional Extras

ORDER CODE - DIN-Rail Mounting Kit - MK-048



ORDER CODE Additional - Power through USB, no extra power supplied

Mouser Electronics

Authorized Distributor

Click to View Pricing, Inventory, Delivery & Lifecycle Information:

[Brainboxes:](#)

[US-257](#)