

RS-232 Null Modem Adapter

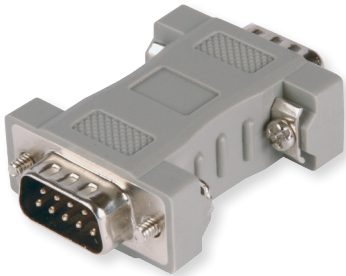
Model MMNM9

B+B SMARTWORX

Powered by

ADVANTECH

www.advantech-bb.com



PRODUCT FEATURES

- Interconnect two devices with similar DTE ports
- Reverse Pin 2 (Transmit Data) and Pin 3 (Receive Data)
- Connect TD to RD, DTR to DSR, and RTS to CTS
- Transfer port power from host to peripheral
- Ideal for use with port powered converters from B+B SmartWorx

Null modem adapters are used to connect two DTEs (computer, terminal, printer etc.) directly using a RS-232 serial cable. The original RS-232 standard only defined the connection of DTEs with DCEs (i.e. modems).

With a null modem adapter, the Transmit and Receive lines are cross-linked. Depending on the purpose, one or more handshake lines are cross-linked. Several wiring layouts are in use because the null modem connection is not covered by a standard. B+B SmartWorx' Null Modem adapter comes with a variety of connector options and pin outs to cover most common applications.

ORDERING INFORMATION

MODEL NUMBER	DESCRIPTION
MMNM9	Null Modem Adapter - DB9 Male / DB9 Male

PIN OUT DIAGRAM

MMNM9 (DB9 Male to DB9 Male)



All product specifications are subject to change without notice.
MMNM9_NullModem_3517ds

Mouser Electronics

Authorized Distributor

Click to View Pricing, Inventory, Delivery & Lifecycle Information:

[B+B SmartWorx:](#)

[BB-MMNM9](#)