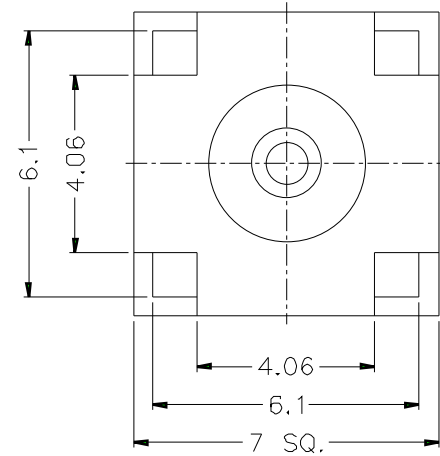
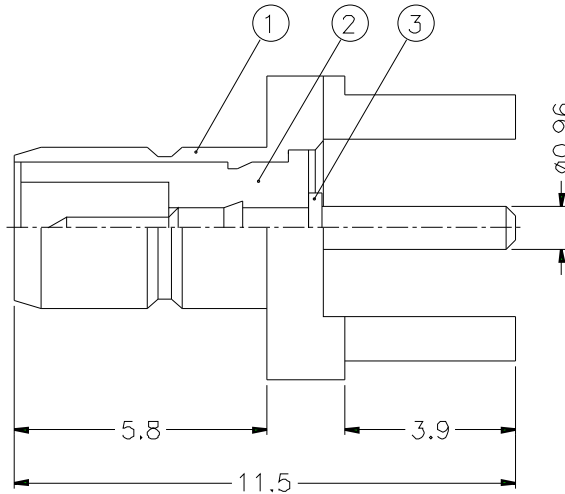
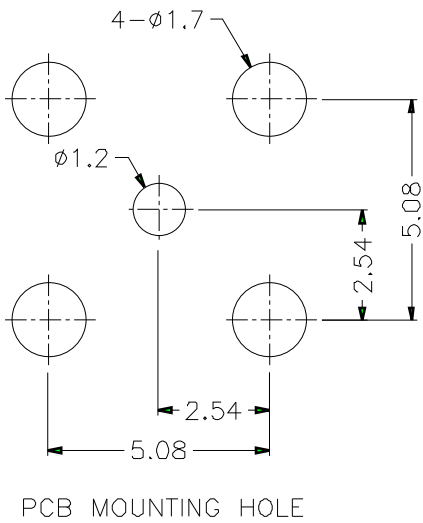


1			2			3			4			5			6			7			8		
REVISIONS																							
ISS	ZONE	DESCRIPTION\PER REQUEST\DATE																					



- NOTES: FINISH (PLATING THICKNESS IN MICRO-INCHES)
1. BRASS PER QQ-B-626
  2. GOLD PL. 3 MIN. THICK OVER NICKEL PL. 100 MIN. THICK OVER COPPER STRIKE
  3. GOLD PL. 30 MIN. THICK OVER NICKEL PL. 100 MIN. THICK OVER COPPER STRIKE
  4. TEFLON MIL-P-19468

DIMENSIONS ARE IN MILLIMETERS				PART NO. SMB1251B1-3GT30G-50	
UNLESS OTHERWISE SPECIFIED TOLERANCES				APPROVED	DATE
0.5-6 = ±0.2					10-11-01'
6-30 = ±0.4				CHECKED	DATE
30-120 = ±0.6					10-11-01'
120-315 = ±1				DRAWN	DATE
315-1000 = ±1.6					10-11-01'
1000-2000 = ±2.4				FILE NO.	

<b>Amphenol</b>	
TITLE SMB P.C. MOUNT JACK	
DRAWING NO. KJ-SMB1251B1-3GT30G-50	
ITEM NO.	

3	CONTACT PIN	NOTE 1	NOTE 3	1	SMB7700-3-A
2	INSULATOR	NOTE 4	NATURAL	1	SMB7700-2T-5D -B
1	BODY	NOTE 1	NOTE 2	1	SMB7700-1-A
NO.	DESCRIPTION	MATERIAL	FINISH	Q'TY	DRAWING NO.

SCALE	6/1	ISSUE	A
-------	-----	-------	---