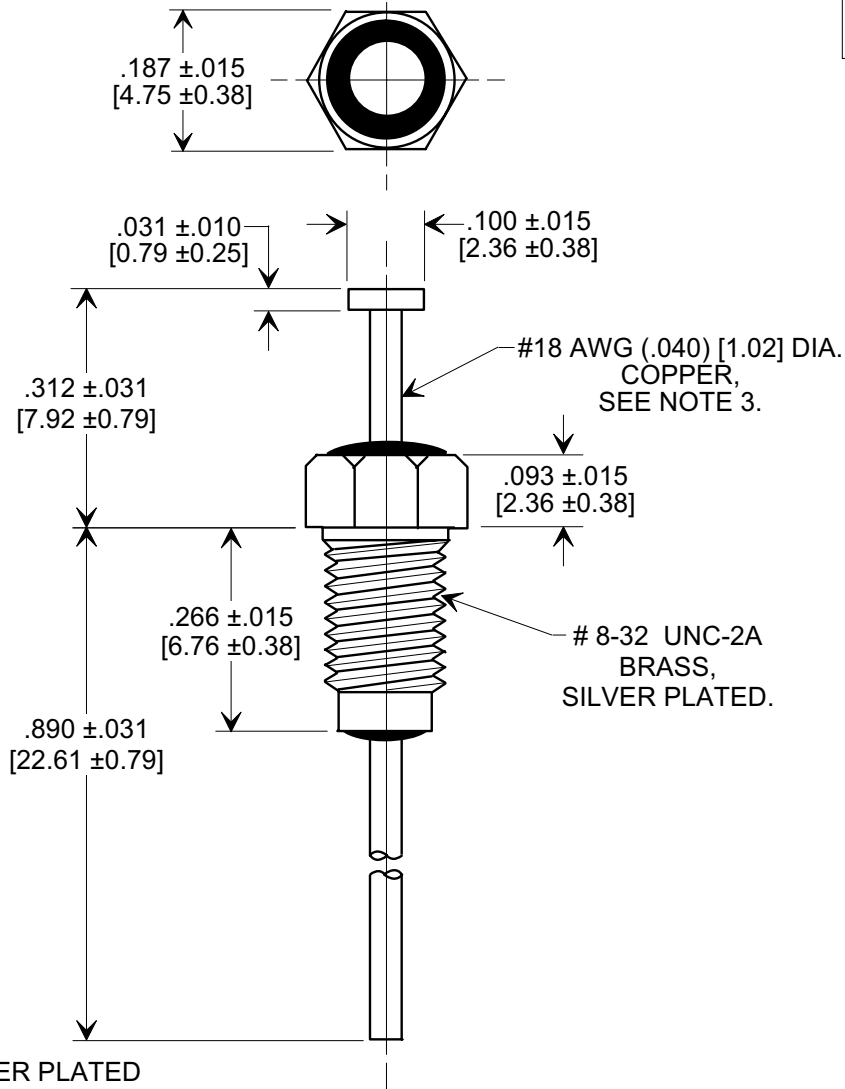
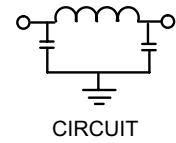
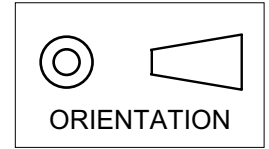


MARKETING SALES DRAWING

DIMENSIONS IN INCHES - DO NOT SCALE THIS DRAWING
 DIMENSIONS IN METRIC - []

Electrical Testing
 per Tusonix standard
 test plans and Mil-Std-202
 Test Methods.



NOTES:

- SUPPLIED WITH SILVER PLATED HEX NUT AND LOCKWASHER.
- TUSONIX STANDARD PART NUMBER: 4201-006.
 TUSONIX RoHS COMPLIANT PART NUMBER: 4201-006 LF.
 CUSTOMER MUST SPECIFY STANDARD OR RoHS PART NUMBER WHEN ORDERING.
- LEAD FINISH: STANDARD PART #: 60/40 SOLDER PLATED. RoHS PART #: SILVER PLATED.
- PART MARKING: TRADEMARK AND VARIATION NUMBER ON HEX FLATS.
 STANDARD PART: BLACK INK. RoHS PART: GREEN INK.

| MIN. CAP. (pF) | WORKING VOLTAGE (VVdc) | | CURRENT (Idc) | DWV (VDC) | I.R. MIN. @ 100 VDC | MINIMUM NO LOAD INSERTION LOSS (dB) AT 25°C PER MIL-STD -220 | | | |
|----------------|------------------------|-------|---------------|-----------|---------------------|--------------------------------------------------------------|---------|-------|--------|
| | 85°C | 125°C | | | | 10 MHz | 100 MHz | 1 GHz | 10 GHz |
| 1500 | 200 | 100 | 15 A | 400 | 10 G | 5 | 38 | 63 | 70 |

| | | | | | |
|---------------------------------------------------------------------------------------------------------------------------------------------------------------------------|---|----------------------------------------------|------------------------|------------------------------------------|-----------------|
| X-2015 Rev-0 REVISION RECORD Original Release C.O. 3173 RDN TO COMP FMT & ADDED METRIC. 02-11-02 20020213-3-02 ADDED NOTES. S.M. 07-27-05 20050726-2-15 | 0 | --TOLERANCES-- Unless Otherwise Specified | | Title BUSHING STYLE EMI FILTER | |
| | 1 | DECIMAL ± | Drawn S.M. 01-11-02 | | Scale 4X |
| | 2 | ANGLES ± | Approved T.C. 02-11-02 | | |
| | | TUSONIX TUCSON, ARIZONA | | A | 4201-006 |

Mouser Electronics

Authorized Distributor

Click to View Pricing, Inventory, Delivery & Lifecycle Information:

[CTS:](#)

[4201-006LF](#)