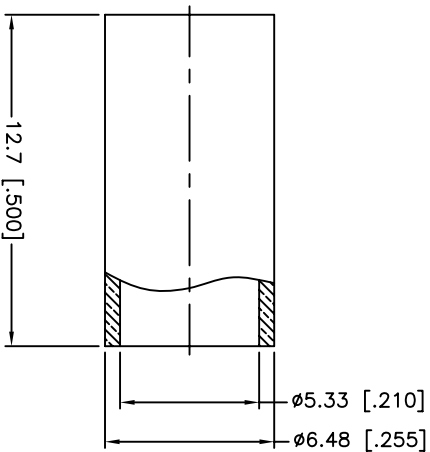
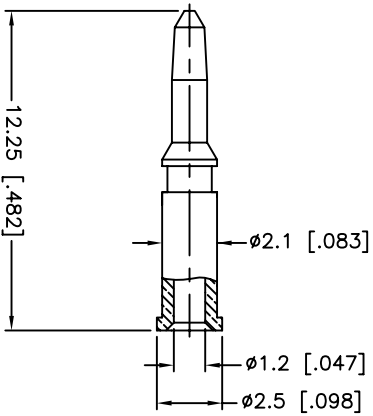
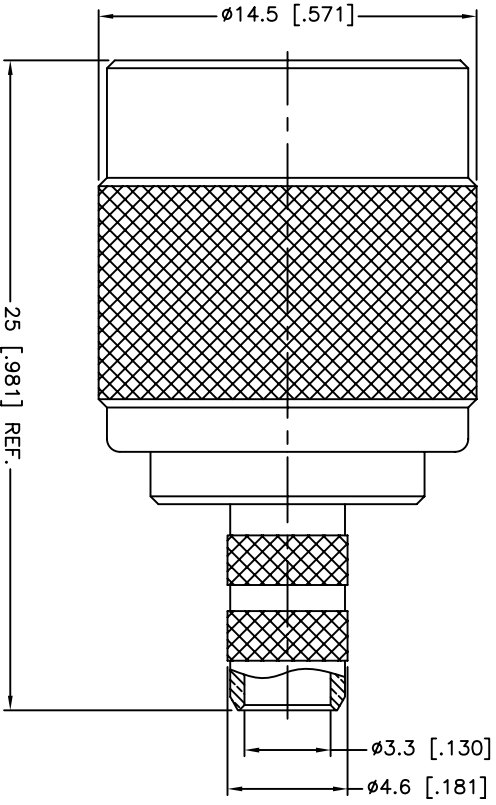
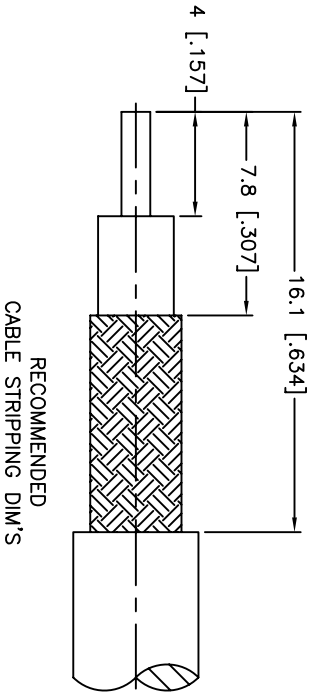


REV.	DATE	ECR NO.	DESCRIPTION
NC	08/04/98	XXXXXX	INITIAL RELEASE
A	03/27/05	100025	UPDATE DRAWING FORMAT
B	01/22/11	2138	CHANGE THE FERRULE O.D. AND I.D.



NOTE:  
1. CRIMPED FERRULE  
HEX CRIMP SIZE .213"  
2. CRIMPED CONTACT PIN  
HEX CRIMP SIZE .068"

QTY	FINISH	MATERIAL	DESCRIPTION
1	NICKEL	COPPER	FERRULE
1	GOLD	BRASS	CONTACT PIN
1	NICKEL	BRASS	WASHER
1	NATURAL	DELIRIN	RING
1	NICKEL	BRASS	RETAINER RING
1	RED	RUBBER	GASKET
1	NATURAL	DELIRIN	INSULATOR
1	NICKEL	BRASS	BODY
1	NICKEL	BRASS	SHELL

APPROVALS	DATE
M.ZHANG	01/22/11
CHECKED	
ISSUED	
SHEET	1 OF 1

UNLESS OTHERWISE SPECIFIED, DIMENSIONS ARE IN INCHES AND FOR CUSTOMER REFERENCE ONLY.
UNLESS OTHERWISE SPECIFIED, TOLERANCES FOR MILLIMETERS ARE:
UNLESS OTHERWISE SPECIFIED, TOLERANCES FOR INCHES ARE:
0.5 - 8mm ± 0.20mm
8 - 30mm ± 0.40mm
30 - 120mm ± 0.50mm
.020 - .315 = ± 0.007"
.315 - 1.180 = ± 0.015"
1.180 - 4.724 = ± 0.020"

DO NOT SCALE DRAWING

CAD FILE  
C:/CONNEX/122410.DWG

DWG. NO. 122410.DWG

REV. B

SIZE A

SCALE NA

# Amphenol Connex

TNC CRIMP PLUG - LMR200

122410