



SPECIFICATIONS

- RATING :** 2A/36VDC
 - ELECTRICAL LIFE :** 200,000 make-and-break cycles at full load
 - MECHANICAL LIFE :** 1,000,000 cycles
 - INSULATION RESISTANCE :** 1,000 MΩ min. at 500VDC
 - DIELECTRIC STRENGTH :** 2,000V RMS @ sea level
 - CONTACT RESISTANCE :** 50 mΩ max.
 - OPERATION TEMPERATURE :** -20°C~+70°C
 - TRAVEL:** About 2.0±0.20mm
 - OPERATION PRESSURE :** 4.5N±1.5N
 - INGRESS PROTECTION :** IP67
 - TORQUE :** 11.5 kgf · cm
 - THICKNESS :** 8.0mm (Max.)
- Current limiting resistor is required to limit LED forward current to 20mA.**

MATERIALS

- BUSHING :** Aluminum alloy / Stainless Steel
- BASE :** PBT (UL 94-V0)
- ACTUATOR :** PC (Translucent UL 94-V2)
- CAP :** Aluminum alloy / Stainless Steel
- SPRING :** Steel.
- SEALING :** Silicone (Translucent).
- O-Ring :** Silicone (Translucent).
- TERMINAL :** Brass ,Gold flash plated.
- CONTACT :** Silver alloy.
- HEX NUT :** Brass (Nickel plated).

MPB16 Pushbutton Switches

IP 67
ACCORDING TO
EN 60529:1991+A1:2001
IEC 60529:2001



HOW TO ORDER

MODEL NO.	BODY TYPE	BUTTON TYPE	LIGHT TYPE	LED COLOR	TERMINAL SHAPE	TERMINAL PLATING	LED VOLTAGE
MPB16							
	Body type CA AL alloy (Natural Anodized) CB AL alloy (Black Anodized)	Button type R Round	Light type E Ring P Power logo	LED color	Terminal shape J Solder terminal T1 Wire length 500mm	Terminal plating R Gold flash	LED voltage
MPB16							
	Body type A1 Stainless (Natural), Double flat A2 Stainless (Natural) A3 Stainless (Natural), D Shape	Button and light type HE Ring, High FP Power logo, Flat FE Ring, Flat HN High, Flat (Without LED)					

ITEM NO	COLOR
0	Without LED
1	White
3	Red
4	Orange
5	Yellow
6	Green
7	Blue
DUAL COLOR LED	
A	Red&Green
RGB COLOR LED	
RGB	Red/Green/Blue

Resistance (About LED Voltage)	
0V	Without Resistance
3V	LED input 3 VDC, 47Ω * Red/Yellow/Orange LED type only
6V	LED input 6 VDC, 180Ω
12V	LED input 12 VDC, 470Ω
24V	LED input 24 VDC, 1000Ω

※ ohms value of resistance tolerance: ±5%

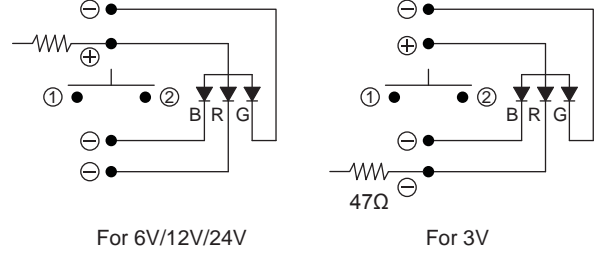
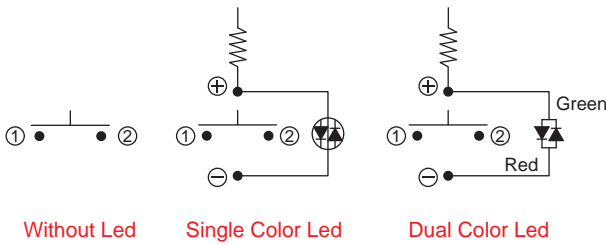
EXAMPLE:
MPB16-CARE-0-JR-0 (Without LED)
MPB16-CARE--JR-
LED color LED voltage

MPB16 Series

16mm Metal Pushbutton Switches

CIRCUIT

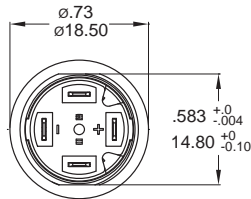
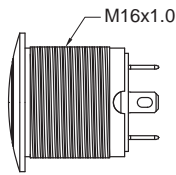
※ According to the input voltage adjustment resistance



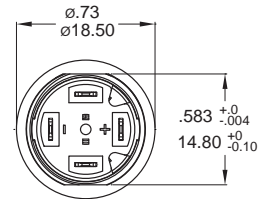
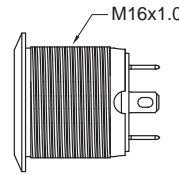
RGB Color Led

BODY TYPE

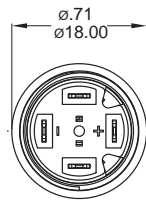
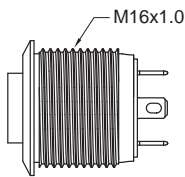
CA/CB Aluminum alloy



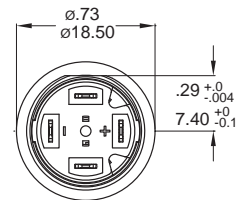
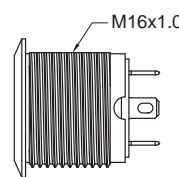
A1 Stainless Steel



A2 Stainless Steel

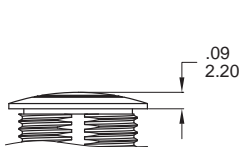


A3 Stainless Steel (D Shape)

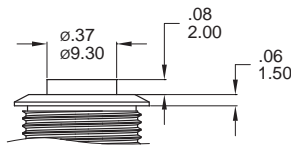


BUTTON TYPE

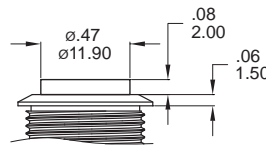
R Round



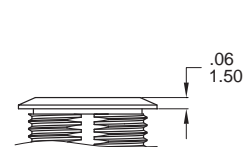
H High, Flat
Ring illuminated



H High, Flat
Without LED

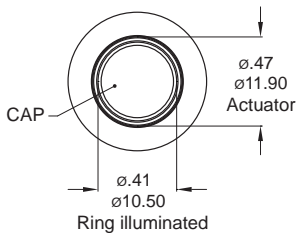


F Flat

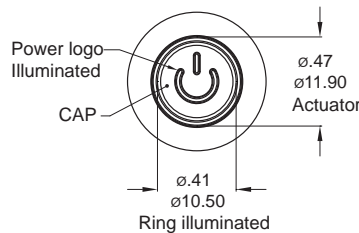


LIGHT TYPE

E Ring, Round



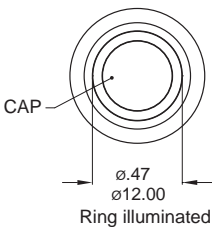
P Power logo, Round



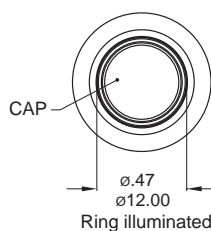
* E, P light type only for CA, CB body.

* HE, FE, FP light type only for A1, A2, A3 body.

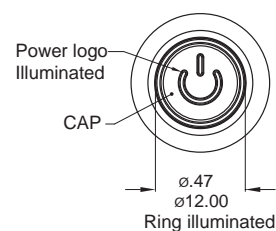
HE Ring, High



FE Ring, Flat

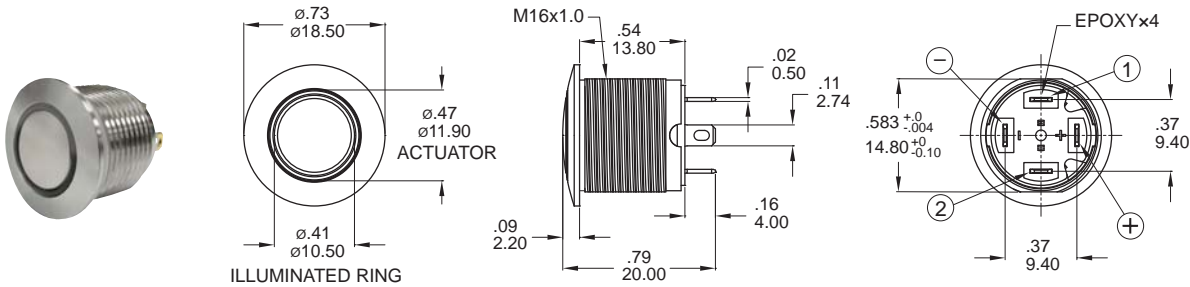


FP Power logo, Flat



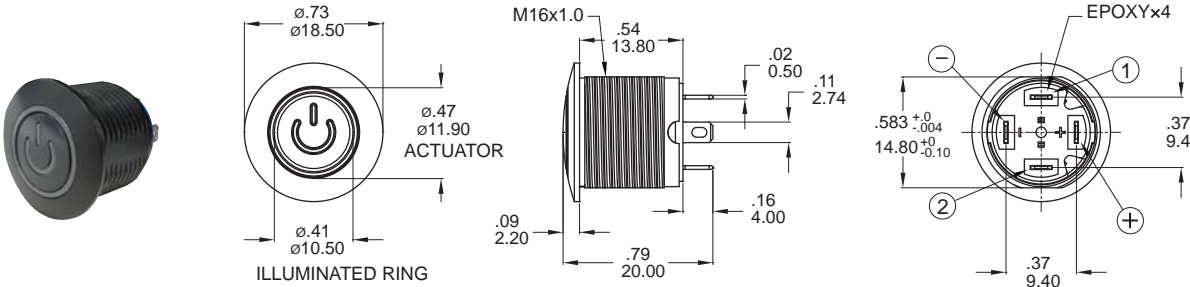
DIMENSION

E Ring



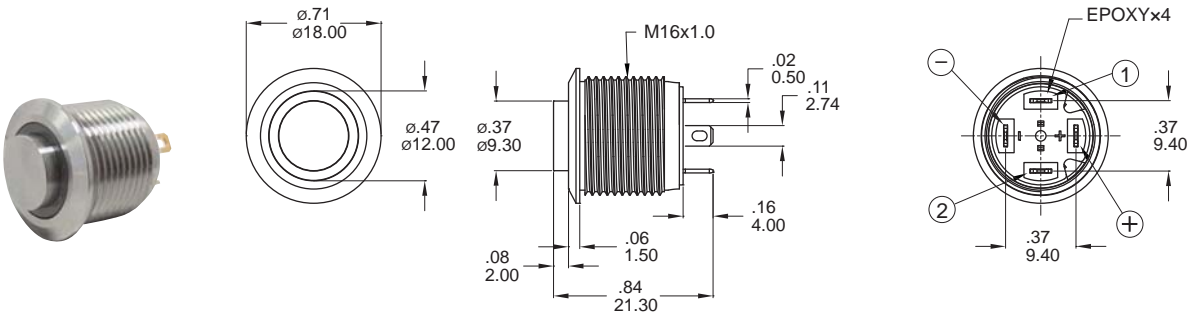
Part No. Shown : MPB16-CARE-□-JR-0V

P Power logo



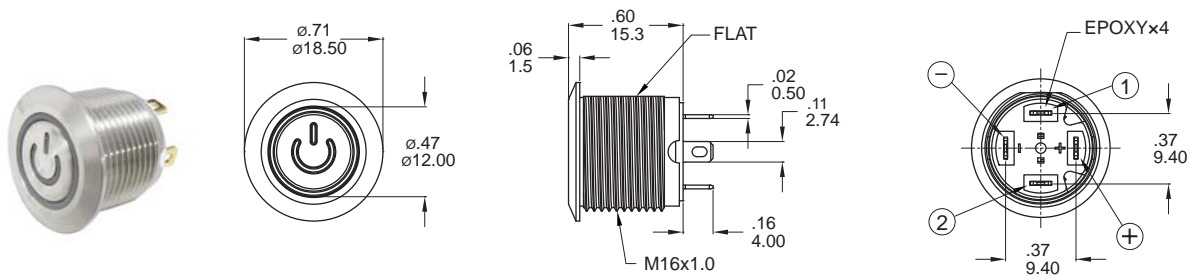
Part No. Shown : MPB16-CBRP-□-JR-0V

HE Ring



Part No. Shown : MPB16-A2HE-□-JR-0V

FP Power logo



Part No. Shown : MPB16-A3FP-□-JR-0V



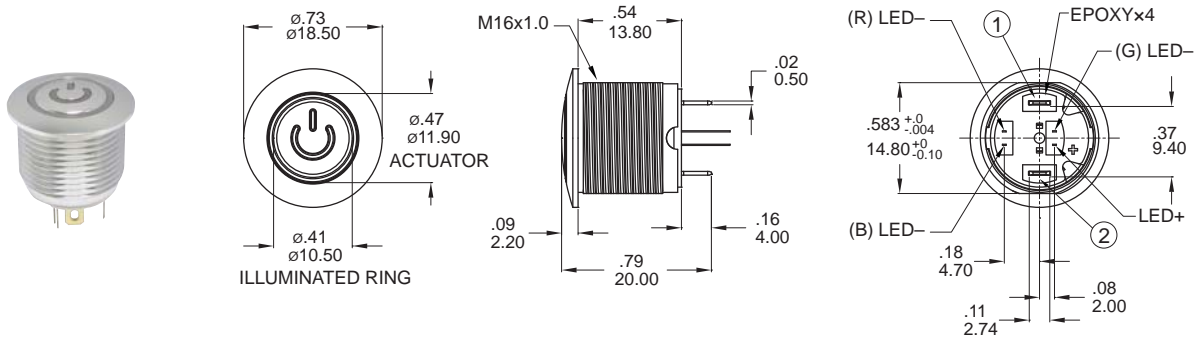
MPB16
Pushbutton Switches

MPB16 Series

16mm Metal Pushbutton Switches

DIMENSION

P Power logo

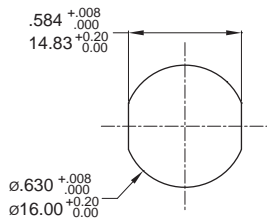


Part No. Shown : MPB16-CARP-RGB-JR-0V

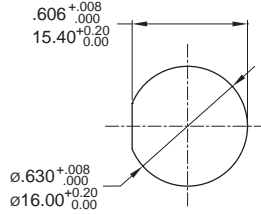
PANEL CUTOUT / HARDWARE

PANEL CUTOUT

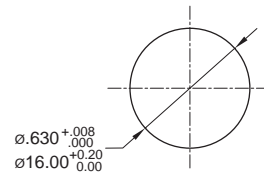
CA/CB/A1 Type



A3 Type

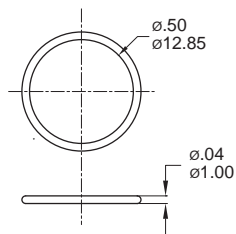


A2 Type

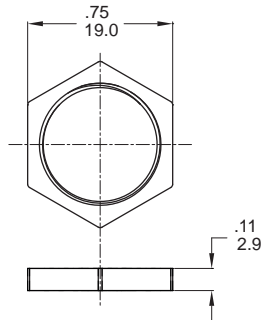


HARDWARE

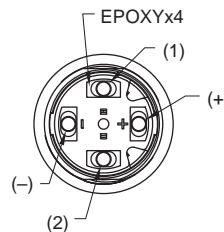
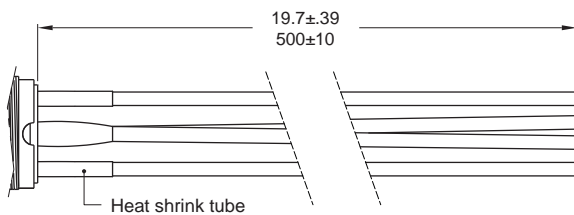
O-RING



M16 NUT



T1 ※Wire=Multi-wire lead AWG20,section 0.6mm²,UL approved

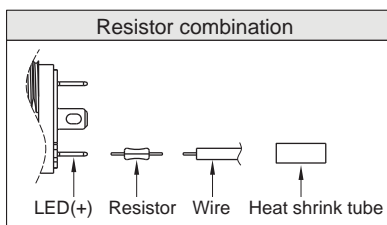


Non-LED

DESCRIPTION	WIRE COLOR
TERMINAL 1	BLACK
TERMINAL 2	BLACK

With LED

DESCRIPTION	WIRE COLOR
TERMINAL 1	BLACK
TERMINAL 2	BLACK
LED+	RED
LED-	GREEN



Mouser Electronics

Authorized Distributor

Click to View Pricing, Inventory, Delivery & Lifecycle Information:

Dailywell:

[MPB16-A1HE-RGB-JR-0V](#) [MPB16-CARP-6-JR-0V](#) [MPB16-A3FP-RGB-JR-0V](#) [MPB16-CARE-0-JR-0V](#) [MPB16-CARE-1-JR-0V](#) [MPB16-CARE-3-JR-0V](#) [MPB16-CARE-3-JR-12V](#) [MPB16-CARE-3-JR-24V](#) [MPB16-CBRP-RGB-JR-12V](#) [MPB16-CBRP-RGB-JR-3V](#) [MPB16-CBRP-1-JR-0V](#) [MPB16-CBRP-3-JR-3V](#) [MPB16-CBRP-4-JR-0V](#) [MPB16-CBRP-6-JR-6V](#) [MPB16-CBRP-7-JR-6V](#) [MPB16-CBRP-A-JR-0V](#) [MPB16-CARP-A-JR-3V](#) [MPB16-CARP-A-JR-6V](#) [MPB16-CARP-RGB-JR-0V](#) [MPB16-CARP-RGB-JR-12V](#) [MPB16-CARP-RGB-JR-24V](#) [MPB16-CARP-RGB-JR-6V](#) [MPB16-CARP-6-JR-6V](#) [MPB16-CARP-7-JR-12V](#) [MPB16-CARP-7-JR-24V](#) [MPB16-CARP-A-JR-0V](#) [MPB16-CARP-A-JR-12V](#) [MPB16-CARP-A-JR-24V](#) [MPB16-CARP-5-JR-0V](#) [MPB16-CARP-5-JR-12V](#) [MPB16-CARP-5-JR-24V](#) [MPB16-CARP-5-JR-3V](#) [MPB16-CARP-5-JR-6V](#) [MPB16-CARP-6-JR-12V](#) [MPB16-CARP-1-JR-24V](#) [MPB16-CARP-1-JR-6V](#) [MPB16-CARP-3-JR-12V](#) [MPB16-CARP-3-JR-24V](#) [MPB16-CARP-3-JR-6V](#) [MPB16-CARP-4-JR-0V](#) [MPB16-CARE-RGB-JR-12V](#) [MPB16-CARE-RGB-JR-24V](#) [MPB16-CARE-RGB-JR-3V](#) [MPB16-CARE-RGB-JR-6V](#) [MPB16-CARP-1-JR-0V](#) [MPB16-CARP-1-JR-12V](#) [MPB16-CARE-6-JR-6V](#) [MPB16-CARE-7-JR-24V](#) [MPB16-CARE-A-JR-0V](#) [MPB16-CARE-A-JR-24V](#) [MPB16-CARE-A-JR-3V](#) [MPB16-CARE-A-JR-6V](#) [MPB16-CARE-5-JR-12V](#) [MPB16-CARE-5-JR-24V](#) [MPB16-CARE-5-JR-3V](#) [MPB16-CARE-5-JR-6V](#) [MPB16-CARE-6-JR-12V](#) [MPB16-CARE-6-JR-24V](#) [MPB16-CARE-1-JR-12V](#) [MPB16-CARE-1-JR-24V](#) [MPB16-CARE-1-JR-6V](#) [MPB16-CARE-3-JR-3V](#) [MPB16-CARE-3-JR-6V](#) [MPB16-CARE-5-JR-0V](#) [MPB16-A3FP-7-JR-6V](#) [MPB16-A3FP-A-JR-0V](#) [MPB16-A3FP-A-JR-12V](#) [MPB16-A3FP-A-JR-3V](#) [MPB16-A3FP-A-JR-6V](#) [MPB16-A3FP-RGB-JR-6V](#) [MPB16-A3FP-6-JR-12V](#) [MPB16-A3FP-6-JR-24V](#) [MPB16-A3FP-6-JR-6V](#) [MPB16-A3FP-7-JR-0V](#) [MPB16-A3FP-7-JR-12V](#) [MPB16-A3FP-7-JR-24V](#) [MPB16-A3FP-3-JR-0V](#) [MPB16-A3FP-3-JR-12V](#) [MPB16-A3FP-3-JR-3V](#) [MPB16-A3FP-5-JR-0V](#) [MPB16-A3FP-5-JR-24V](#) [MPB16-A3FP-6-JR-0V](#) [MPB16-A2HE-A-JR-12V](#) [MPB16-A2HE-RGB-JR-0V](#) [MPB16-A3FP-0-JR-0V](#) [MPB16-A3FP-1-JR-0V](#) [MPB16-A3FP-1-JR-12V](#) [MPB16-A3FP-1-JR-6V](#) [MPB16-A2HE-6-JR-0V](#) [MPB16-A2HE-6-JR-6V](#) [MPB16-A2HE-7-JR-0V](#) [MPB16-A2HE-7-JR-12V](#) [MPB16-A2HE-7-JR-24V](#) [MPB16-A2HE-A-JR-0V](#) [MPB16-A2HE-3-JR-0V](#) [MPB16-A2HE-3-JR-12V](#) [MPB16-A2HE-3-JR-3V](#) [MPB16-A2HE-4-JR-0V](#) [MPB16-A2HE-5-JR-0V](#) [MPB16-A2HE-5-JR-12V](#)