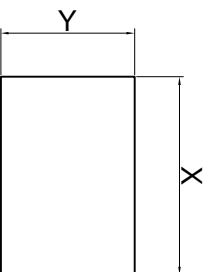
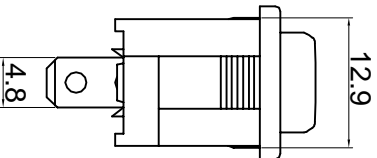
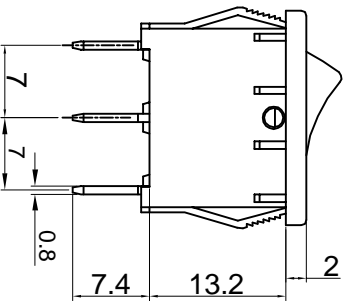
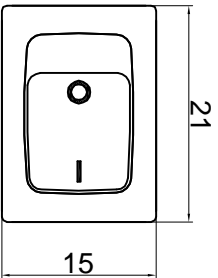








东莞市宏聚电子五金制品有限公司

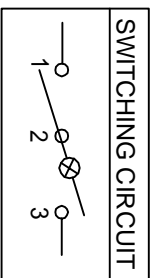
HONGJU(DONGGUAN)ELECTRONIC & METAL PRODUCTS CO.,LTD

MR-1



CUT-OUT

Rating: 10A 125V AC (UL CUL) 
 6A 250V AC (CQC ENEC VDE)   
 Contact Resistance: 50mΩ Max
 Insulation Resistance: DC 500V 100MΩ Min
 Dielectric Strength: AC1500V 1 minute
 Dielectric life: 10,000 cycles
 Operating Temperature: 0°C~85°C



尺寸	X	Y
0.75~1.25	19.2-0.1	13.0+0.1
1.25~2.00	19.4-0.1	13.0+0.1
2.00~3.00	19.8-0.1	13.0+0.1

MATERIAL:
 Body:Nylon66, UL rated:94V-2 min
 Actuator:Nylon66, UL rated:94V-2 min
 Terminal:Brass,silver or tin plated

0	1	2	3	4	5	7	8	9	A	B	C	D	E	G	H	J	L

公差 TOLERANCES		X±0.3		Y±0.15		角度 ANGLE		±1°		单位		DIMENSION UNIT		mm.	
版本 VER	变更说明 CHANGE DESCRIPTION	日期 DATE	ECN NO.	批准 APPROVED BY	核对 CHECKED BY	日期 DATE	绘图 DRAWN BY	日期 DATE	绘图 DRAWN BY	品名	TITLE	图号	DRAWING NO.		
A1	重新整理后发行	2014.07.17	N/A	核准	核对	2014.07.17		2014.07.17		MR-1-118-CXL-BRAAE-220	MR-1-118-CXL-BRAAE-220	MR-1-118-CXL-BRAAE-220	MR-1-118-CXL-BRAAE-220		

File Code: HJ-WI-E-03A