

# High Efficiency Standard Rectifier

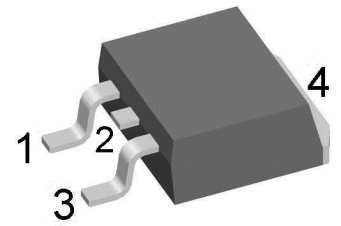
$V_{RRM}$	=	800 V
$I_{FAV}$	=	40 A
$V_F$	=	1.26 V

## Single Diode

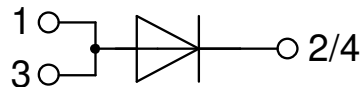
### Part number

**DLA40IM800PC**

Marking on Product: *DLA40IM800PC*



Backside: cathode



### Features / Advantages:

- Planar passivated chips
- Very low leakage current
- Very low forward voltage drop
- Improved thermal behaviour

### Applications:

- Diode for main rectification
- For single and three phase bridge configurations

### Package: TO-263 (D2Pak)

- Industry standard outline
- RoHS compliant
- Epoxy meets UL 94V-0

### Disclaimer Notice

Information furnished is believed to be accurate and reliable. However, users should independently evaluate the suitability of and test each product selected for their own applications. Littelfuse products are not designed for, and may not be used in, all applications. Read complete Disclaimer Notice at [www.littelfuse.com/disclaimer-electronics](http://www.littelfuse.com/disclaimer-electronics).



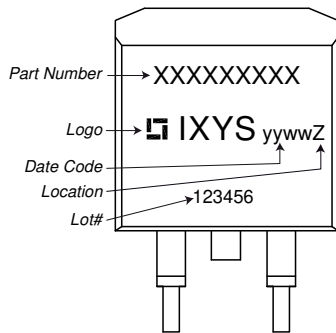
Rectifier				Ratings			
Symbol	Definition	Conditions	min.	typ.	max.	Unit	
$V_{RSM}$	max. non-repetitive reverse blocking voltage				900	V	
$V_{RRM}$	max. repetitive reverse blocking voltage				800	V	
$I_R$	reverse current	$V_R = 800\text{ V}$			10	$\mu\text{A}$	
		$V_R = 800\text{ V}$			0.05	mA	
$V_F$	forward voltage drop	$I_F = 40\text{ A}$			1.30	V	
		$I_F = 80\text{ A}$			1.56	V	
		$I_F = 40\text{ A}$	$T_{VJ} = 150^\circ\text{C}$			1.26	V
		$I_F = 80\text{ A}$	$T_{VJ} = 150^\circ\text{C}$			1.65	V
$I_{FAV}$	average forward current	$T_C = 120^\circ\text{C}$ rectangular			40	A	
$V_{F0}$	threshold voltage	} for power loss calculation only			0.85	V	
$r_F$	slope resistance				10	m $\Omega$	
$R_{thJC}$	thermal resistance junction to case				0.8	K/W	
$R_{thCH}$	thermal resistance case to heatsink			0.25		K/W	
$P_{tot}$	total power dissipation		$T_C = 25^\circ\text{C}$		185	W	
$I_{FSM}$	max. forward surge current	t = 10 ms; (50 Hz), sine	$T_{VJ} = 45^\circ\text{C}$		300	A	
		t = 8,3 ms; (60 Hz), sine	$V_R = 0\text{ V}$		325	A	
		t = 10 ms; (50 Hz), sine	$T_{VJ} = 150^\circ\text{C}$		255	A	
		t = 8,3 ms; (60 Hz), sine	$V_R = 0\text{ V}$		275	A	
$I^2t$	value for fusing	t = 10 ms; (50 Hz), sine	$T_{VJ} = 45^\circ\text{C}$		450	A <sup>2</sup> s	
		t = 8,3 ms; (60 Hz), sine	$V_R = 0\text{ V}$		440	A <sup>2</sup> s	
		t = 10 ms; (50 Hz), sine	$T_{VJ} = 150^\circ\text{C}$		325	A <sup>2</sup> s	
		t = 8,3 ms; (60 Hz), sine	$V_R = 0\text{ V}$		315	A <sup>2</sup> s	
$C_J$	junction capacitance	$V_R = 400\text{ V}; f = 1\text{ MHz}$	$T_{VJ} = 25^\circ\text{C}$		10	pF	



Package TO-263 (D2Pak)			Ratings			
Symbol	Definition	Conditions	min.	typ.	max.	Unit
$I_{RMS}$	RMS current	per terminal <sup>1)</sup>			35	A
$T_{VJ}$	virtual junction temperature		-55		175	°C
$T_{op}$	operation temperature		-55		150	°C
$T_{stg}$	storage temperature		-55		150	°C
<b>Weight</b>				1.5		g
$F_C$	mounting force with clip		20		60	N

<sup>1)</sup>  $I_{RMS}$  is typically limited by the pin-to-chip resistance (1); or by the current capability of the chip (2). In case of (1) and a product with multiple pins for one chip-potential, the current capability can be increased by connecting the pins as one contact.

**Product Marking**



**Part description**

- D = Diode
- L = Low Voltage Standard Rectifier
- A = (up to 1200V)
- 40 = Current Rating [A]
- IM = Single Diode
- 800 = Reverse Voltage [V]
- PC = TO-263AB (D2Pak) (2)

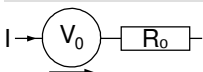
Ordering	Ordering Number	Marking on Product	Delivery Mode	Quantity	Code No.
Standard	DLA40IM800PC-TRL	DLA40IM800PC	Tape & Reel	800	509995
Alternative	DLA40IM800PC-TUB	DLA40IM800PC	Tube	50	525085

Similar Part	Package	Voltage class
DSI30-08AS	TO-263AB (D2Pak) (2)	800
DSI30-12AS	TO-263AB (D2Pak) (2)	1200
DSI30-16AS	TO-263AB (D2Pak) (2)	1600

**Equivalent Circuits for Simulation**

\* on die level

$T_{VJ} = 175^{\circ}C$



**Rectifier**

$V_{0\ max}$	threshold voltage	0.85	V
$R_{0\ max}$	slope resistance *	6.8	mΩ



**Outlines TO-263 (D2Pak)**



Dim.	Millimeter		Inches	
	min	max	min	max
A	4.06	4.83	0.160	0.190
A1	typ. 0.10		typ. 0.004	
A2	2.41		0.095	
b	0.51	0.99	0.020	0.039
b2	1.14	1.40	0.045	0.055
c	0.40	0.74	0.016	0.029
c2	1.14	1.40	0.045	0.055
D	8.38	9.40	0.330	0.370
D1	8.00	8.89	0.315	0.350
D2	2.5		0.098	
E	9.65	10.41	0.380	0.410
E1	6.22	8.50	0.245	0.335
e	2.54 BSC		0.100 BSC	
e1	4.28		0.169	
H	14.61	15.88	0.575	0.625
L	1.78	2.79	0.070	0.110
L1	1.02	1.68	0.040	0.066
W	typ. 0.02	0.040	typ. 0.0008	0.002

*All dimensions conform with and/or within JEDEC standard.*



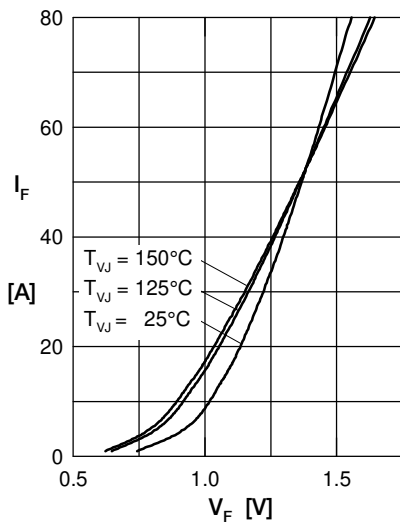
**Rectifier**


Fig. 1 Forward current versus voltage drop

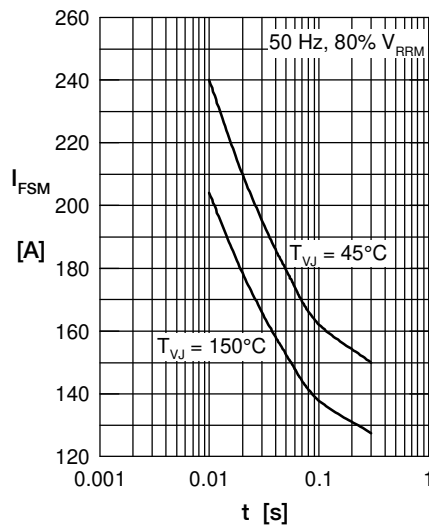


Fig. 2 Surge overload current

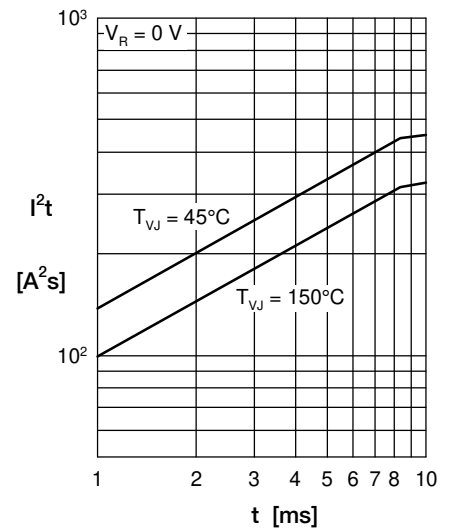
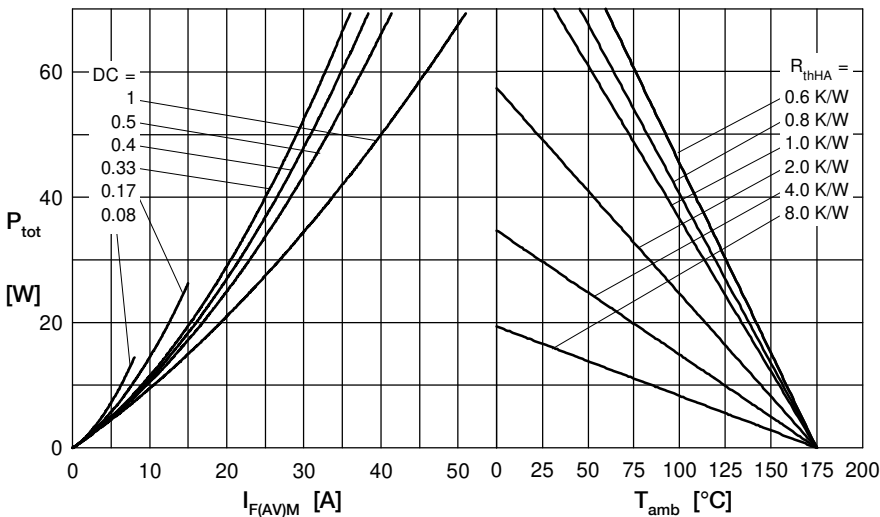

 Fig. 3  $I^2t$  versus time


Fig. 4 Power dissipation versus direct output current and ambient temperature

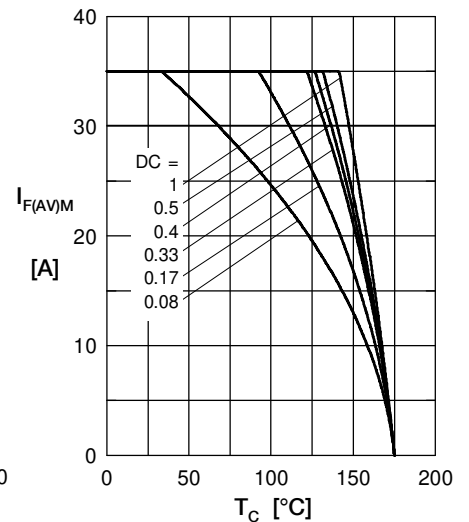


Fig. 5 Max. forward current vs. case temperature

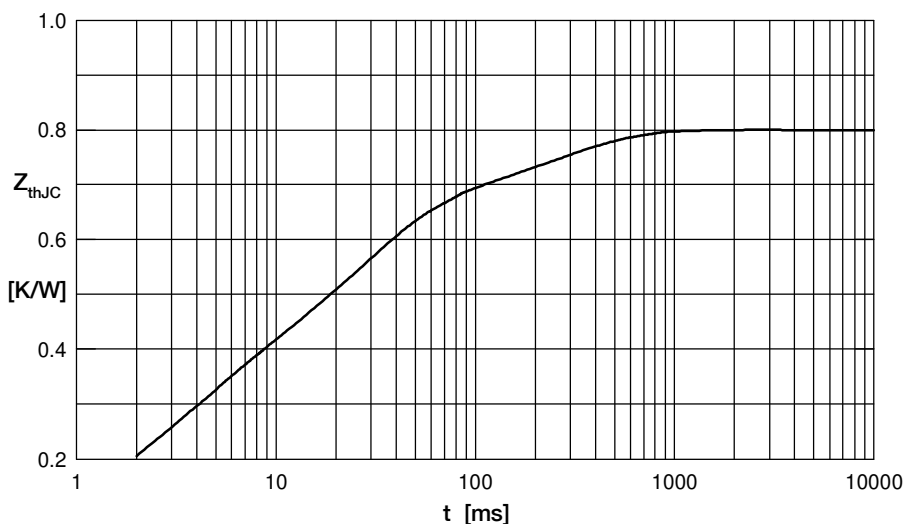


Fig. 6 Transient thermal impedance junction to case

 Constants for  $Z_{thJC}$  calculation:

i	$R_{thi}$ (K/W)	$t_i$ (s)
1	0.04	0.0004
2	0.07	0.002
3	0.19	0.003
4	0.35	0.024
5	0.15	0.25

# Mouser Electronics

Authorized Distributor

Click to View Pricing, Inventory, Delivery & Lifecycle Information:

[IXYS:](#)

[DLA40IM800PC](#)