

Trimmer Capacitors

6mm Ceramic Trimmer Capacitors

TC Capacitors

Single-Turn / Cermet / Industrial / Sealed
 3 Terminal Styles
 RoHS Compliant

Operating Temperature Range: -25°C to +85°C
 Rated Working Voltage: 100VDC
 Withstanding Voltage: 250VDC
 Insulation Resistance : 100000M ohm min
 Raotaion Torque: 30-200g·cm
 Soldering Temperature : 250±5°C

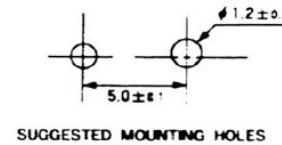
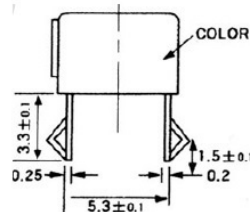
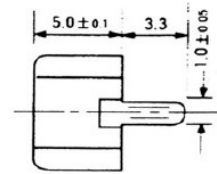
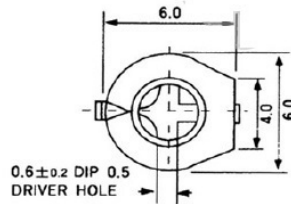
Performance Parameters

Part No.	Mini. Capacitance(PF)	Max. Capacitance(PF)	Temp.Coeff PPM/°C	Q Factor @ 1MHz Cmax
9-030-Style(R,F,S)	1.3PF max	3.0PF +50% -0%	>500	BLACK
9-050-Style(R,F,S)	2.0PF max	5.0PF +50% -0%	>500	BLUE
9-070-Style(R,F,S)	2.5PF max	7.0PF +50% -0%	>500	BLUE
9-100-Style(R,F,S)	3.0PF max	10.0PF +50% -0%	>500	WHITE
9-200-Style(R,F,S)	4.2PF max	20.0PF +50% -0%	>500	RED
9-300-Style(R,F,S)	5.2PF max	30.0PF +50% -0%	>500	GREEN
9-400-Style(R,F,S)	6.8PF max	40.0PF +50% -0%	>300	YELLOW
9-500-Style(R,F,S)	9.0PF max	50.0PF +50% -0%	>200	BROWN
9-600-Style(R,F,S)	11.0PF max	60.0PF +50% -0%	>200	BROWN
9-700-Style(R,F,S)	13.0PF max	70.0PF +50% -0%	>200	BROWN
9-900-Style(R,F,S)	13.5PF max	90.0PF +50% -0%	>200	BROWN

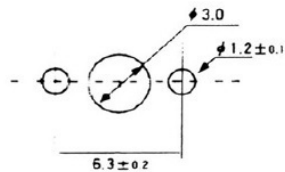
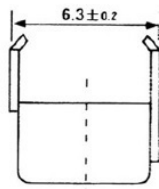
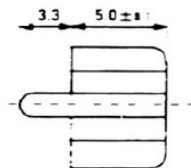
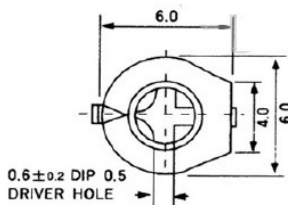
Diameter And Size(Unit: mm)



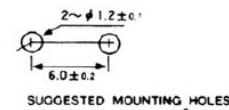
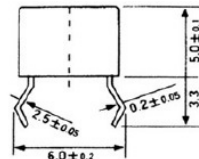
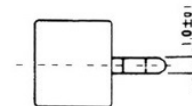
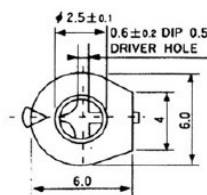
STRAIGHT TYPE



REAR TYPE



FORMING TYPE



EW Electronics
www.ewelectronics.com