

M-4458

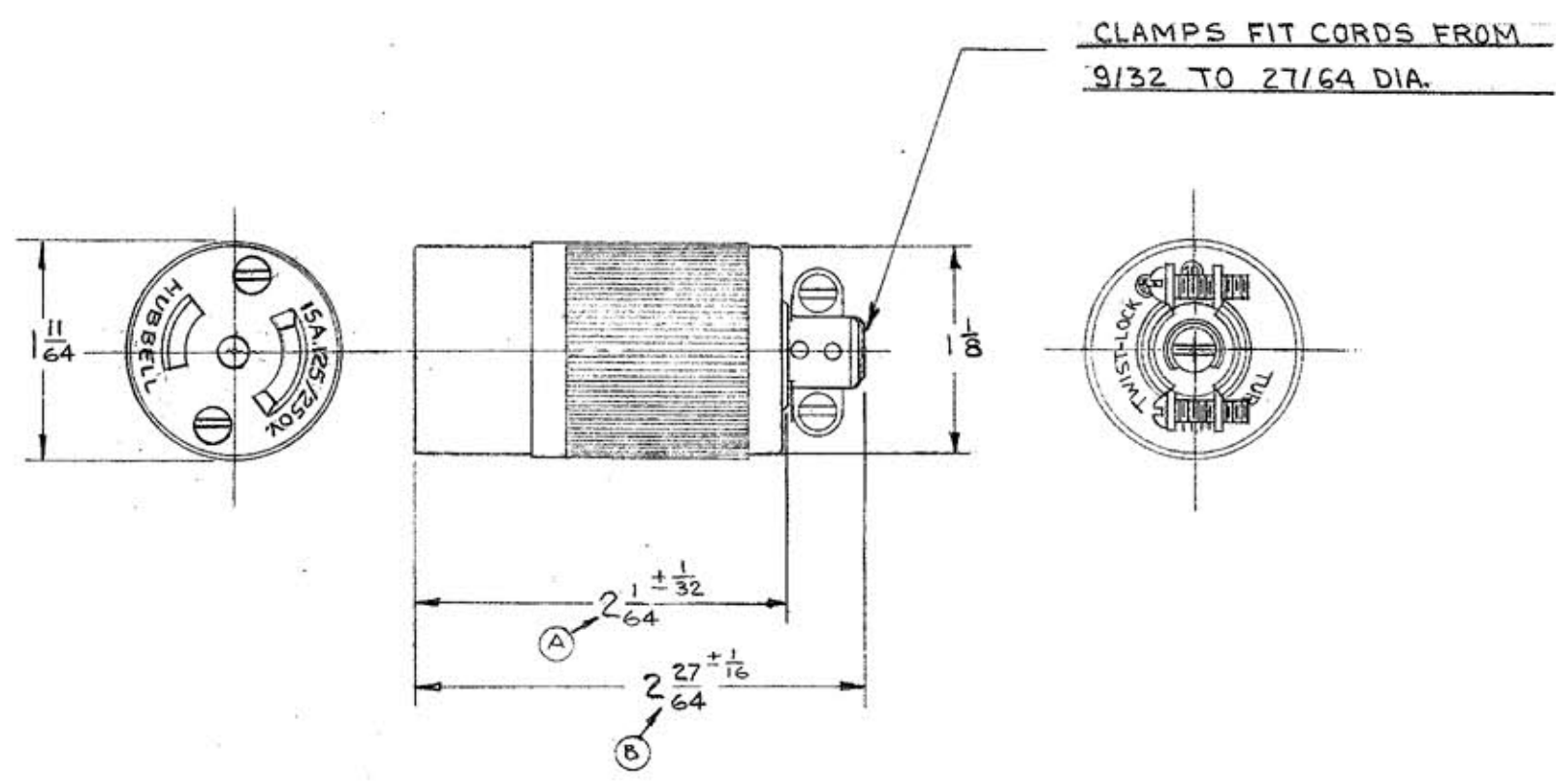
1

LIST OF PARTS

DESCRIPTION	MATERIAL	FINISH
BODY	DUREZ	BLACK
BASE	NYLON	BLACK
INSULATING BARRIER	NYLON	BLACK
INSULATOR	.031 NYLON	NATURAL
CORD CLAMP	.040 CRS	BLACK OX.
BINDING SCREWS	BRASS	(1) NICK PLT
CONTACT SPR. BNDG. PL.	.031 BRONZE	
CONTACT SLEEVE	BRASS	
ROUND HEAD SCREWS	STEEL	BLACK OX.
FILISTER HEAD SCREWS	STEEL	ZINC PLATE

DIMENSION SHEET FOR CAT. NO. 7484

REPAIRABLE NON-REPAIRABLE



4	ADDED (1) NICK PLT. SCREW SEE DEN-1808		3/24/93 M.M.
3	ADDED RD. HD. & FILISTER HD. SCREWS, INSULATOR WAS W/L FIBER SEE DCN #1258	CJC	6-19-92 ALL
2	DIM. 'A' WAS 1 1/4" & 'B' WAS 1 2/32"		5-4-83 ASM
1	RATING REVISED WAS 10A-250V. 15A-125V. RM		2-28-79
SYM	REVISIONS	APP	DATE

B
M-4458

TITLE
15A. 125/250V. 3-WIRE MIDGET
TWIST-LOCK CORD CONNECTOR WITH CORD
GRIPS

TOLERANCES UNLESS OTHERWISE SPECIFIED
FRACTIONS ± 1/64
DECIMALS ± .005
ANGLES ± 2°

HARVEY HUBBELL, INC.
BRIDGEPORT, CONN.

DR. BY R.D.T. APP. BY
TR. BY SCALE FULL
CHK'D. BY ASM. DATE 5-18-66