

IEC Appliance Outlet J, Snap-in Mounting, Front Side, IDC Terminal, integrated Light Pipe, Color Coding



Arrangement "along", white
 (wires along to pin axis)



Arrangement "cross", grey
 (wires cross to pin axis)



Arrangement "cross", black
 (wires cross to pin axis)

Order required accessories separately

type J



70° C

See below:

[Approvals and Compliances](#)

Description

- Panel mount :
 Snap-in version , from front side
- Connector , Pin temperature 70 °C , Protection class I
- Wire gauge 10AWG/6.0mm², 12AWG/4.0mm², 2.5mm²
- Light Pipe as an accessory, has to be ordered seperately
- Live contact as PCB terminal
- Protection cover can be used as wire press
- IDC terminals acc. to IEC 60998-2-3 for solid wires

Unique Selling Proposition

- Reduces labor costs
- Allows wiring of multiple terminals at once
- Light pipe for status indication
- V-Lock cord retaining standard

The integration of light pipes in the appliance outlet provides status indication in smart PDUs. See PDU Landing Page for more information.

[Power Distribution Units](#)

Other versions on request

- Other panel thickness
- Live contact also available as IDC, solder or quick connect terminal
- Samples available in grey and white

References

Alternative: version for 10 A (15 A) [6610-5](#)
 Alternative: version without light pipe [4710](#)

Weblinks

[pdf datasheet](#), [html-datasheet](#), [General Product Information](#), [Distributor-Stock-Check](#), [Accessories](#), [Mounting instruction](#), [Detailed request for product](#), [Microsite](#), [Landing Page](#), [Video](#)

Technical Data

| | | | |
|---------------------------------|--|-------------------------|---|
| Ratings IEC | 16 A / 250 VAC; 50 Hz | appliance inlet/-outlet | type J acc. to IEC 60320-3 |
| Ratings UL/CSA | 20 A / 250 VAC; 60 Hz | | UL 60320-1, CSA C22.2 no. 60320-1 |
| Dielectric Strength | > 2.5 kVAC between L-N > 1.5 kVAC between L/N-PE (1 min/50 Hz) | | (for cold conditions) pin-temperature 70 °C, Protection Class I |
| Allowable Operation Temperature | -25 °C to 70 °C | | |
| Insulation cover | Suitable for appliances with protection class I acc. to IEC 61140 | | |
| Terminal | IDC terminals | | |
| Panel Thickness S | 1/1.2/1.5/2/2.5/3 mm | | |
| Material: Housing | Thermoplastic, UL 94V-0 | | |

Approvals and Compliances

Detailed information on product approvals, code requirements, usage instructions and detailed test conditions can be looked up in [Details about Approvals](#)

Approvals





The approval mark is used by the testing authorities to certify compliance with the safety requirements placed on electronic products.

Approval Reference Type: 4710-5

| Approval Logo | Certificates | Certification Body | Description |
|---------------|---------------|--------------------|--|
| | VDE Approvals | VDE | Certificate Number: 40042639 |
| | UL Approvals | UL | UL File Number: E103791 |
| | CQC Approvals | CQC | CCC Certificate Number: 2018180204005080 |

Product standards

Product standards that are referenced

| Organization | Design | Standard | Description |
|--|-----------------------|-----------------------|---|
|  | Designed according to | IEC 60320-1 | Appliance couplers for household and similar general purposes |
|  | Designed according to | IEC 60320-3 | Appliance couplers for household and similar general purposes |
|  | Designed according to | UL 60320-1 | Standard for Attachment Plugs and Receptacles |
|  | Designed according to | CSA C22.2 no. 60320-1 | General Use Receptacles, Attachment Plugs, and Similar Wiring Devices |






Application standards

Application standards where the product can be used

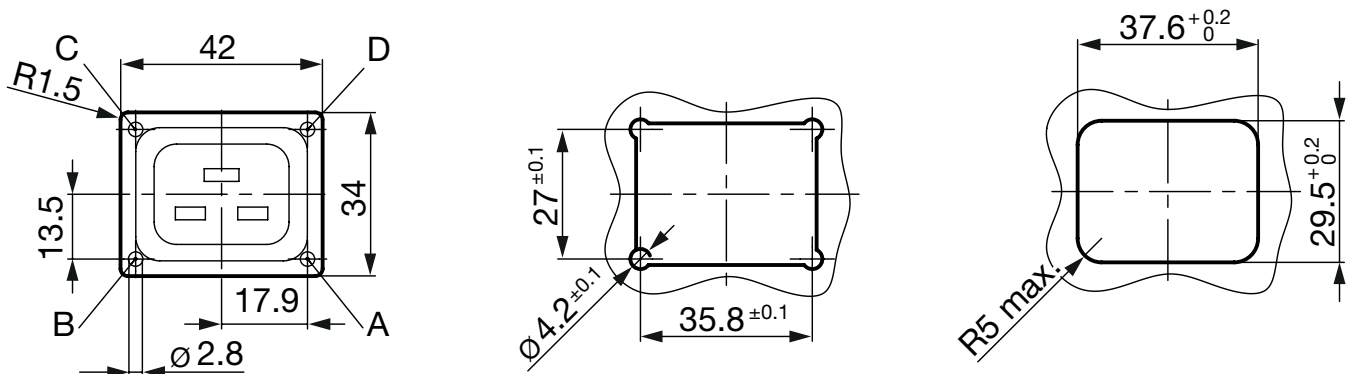
| Organization | Design | Standard | Description |
|--|--------------------------------|--------------|---|
|  | Designed for applications acc. | IEC/UL 60950 | IEC 60950-1 includes the basic requirements for the safety of information technology equipment. |

Compliances

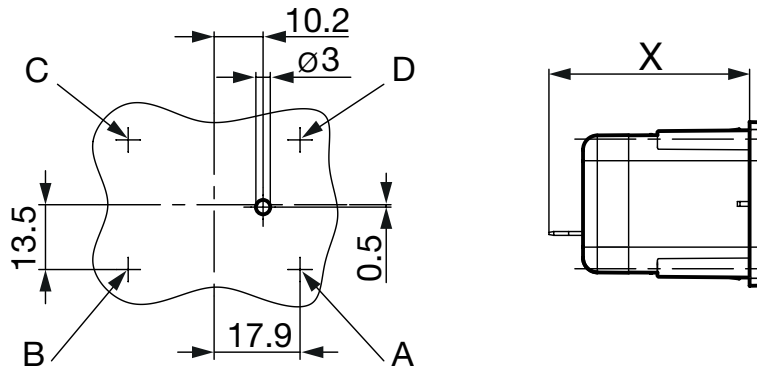
The product complies with following Guide Lines

| Identification | Details | Initiator | Description |
|---|--------------|-------------|--|
|  | RoHS | SCHURTER AG | EU Directive RoHS 2011/65/EU |
|  | China RoHS | SCHURTER AG | The law SJ / T 11363-2006 (China RoHS) has been in force since 1 March 2007. It is similar to the EU directive RoHS. |
|  | Halogen Free | SCHURTER AG | SCHURTER strives to offer our customers halogen free products. |
|  | REACH | SCHURTER AG | On 1 June 2007, Regulation (EC) No 1907/2006 on the Registration, Evaluation, Authorization and Restriction of Chemicals 1 (abbreviated as "REACH") entered into force. |
|  | | SCHURTER AG | V-Lock system are based on a matching plug-dose combination. The connector is equipped with a notch intended for use with the latching cordset. The cord latching system prevents against accidental removal of the cordset. |

Dimensions [mm]



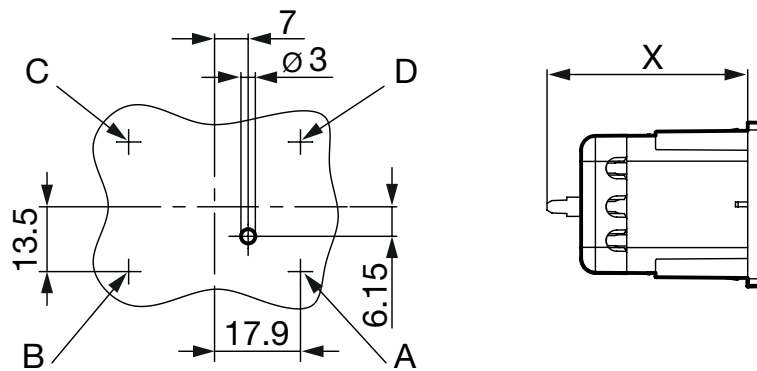
Version "along" (wires along to pin axis)



Length X in mm

| | |
|------------------------|------|
| Solder terminal | 44.1 |
| Quick-connect terminal | 43.7 |
| PCB terminal | 41.8 |

Version "cross" (wires cross to pin axis)

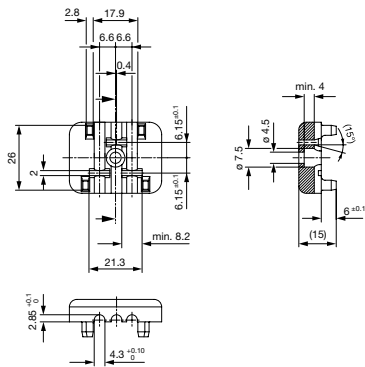


Length X in mm

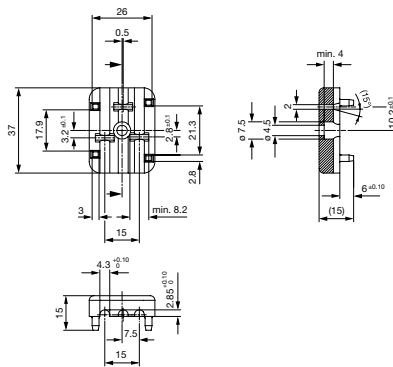
| | |
|------------------------|------|
| Solder terminal | 41.7 |
| Quick-connect terminal | 43.7 |
| PCB terminal | 41.8 |

Assembly Instructions

Wire press version "cross"



Wire press version "along"



- Please see the mounting instructions for a more detailed description of the assembly. [Mounting instruction](#)
- You can find the CAD files for wire press tools in the downloads. [CAD-Drawings](#)

All Variants

| Alignment 1) | Terminal type live contact | Conductor cross section | Panel Thickness [mm] | Light Pipe Position - A | Light Pipe Position - B | Light Pipe Position - C | Light Pipe Position - D | Color | Order Number |
|--------------|----------------------------|------------------------------|----------------------|-------------------------|-------------------------|-------------------------|-------------------------|-------|---------------------------|
| along | PCB terminals | 2.5 mm ² | 1.5 | | ● | ● | | black | 3-110-012 |
| along | PCB terminals | 4.0 mm ² / 12 AWG | 1.5 | | ● | ● | | black | 3-103-026 |
| along | PCB terminals | 2.5 mm ² | 2.0 | | ● | ● | | black | 3-110-013 |
| along | PCB terminals | 4.0 mm ² / 12 AWG | 2.0 | | ● | ● | | black | 3-110-014 |
| cross | PCB terminals | 2.5 mm ² | 1.5 | | | ● | ● | black | 3-110-015 |
| cross | PCB terminals | 4.0 mm ² / 12 AWG | 1.5 | | | ● | ● | black | 3-110-016 |
| cross | PCB terminals | 2.5 mm ² | 2.0 | | | ● | ● | black | 3-110-020 |
| cross | PCB terminals | 4.0 mm ² / 12 AWG | 2.0 | | | ● | ● | black | 3-110-021 |

Most Popular:

Availability for all products can be searched real-time: <https://www.schurter.com/en/Stock-Check/Stock-Check-SCHURTER>

1) The alignment describes whether the wires are along or across to the connector pin axis.

Packaging unit 50 Pcs

Required Accessory

Description



Light Pipe
 Transparent Plexiglas Light Pipe

Mating Inlets/Plugs

Category / Description



[Plug Overview complete](#)

| | |
|---|------|
| IEC Plug I, Cord Connector (Rewireable), Straight | 4796 |
| IEC Plug I, Cord Connector (Rewireable), Angled | 4789 |

[Plug further types to 4710-5](#)

Mating Inlets/Plugs shuttered



[Interconnection Cord Overview complete](#)

| | |
|---|-----------|
| VAC19KS, Interconnection, V-Lock cord retaining, 2.0 m, Connector IEC C19, H05VV-F3G1.5 / SJT 3x14 AWG, black | 3-100-362 |
| VAC19KS, Interconnection, V-Lock cord retaining, 3.0 m, Connector IEC C19, H05VV-F3G1.5 / SJT 3x14 AWG, black | 3-100-363 |
| VAC19KS, Interconnection, V-Lock cord retaining, 1.0 m, Connector IEC C19, H05VV-F3G1.5, black | 6051.2147 |
| VAC19KS, Interconnection, V-Lock cord retaining, 1.0 m, Connector IEC C19, H05VV-F3G1.5 / SJT 3x14 AWG, black | 6051.2197 |
| VAC19KS, Interconnection, V-Lock cord retaining, 2.0 m, Connector IEC C19, H05VV-F3G1.5, black | 6051.2047 |

[Interconnection Cord further types to 4710-5](#)