



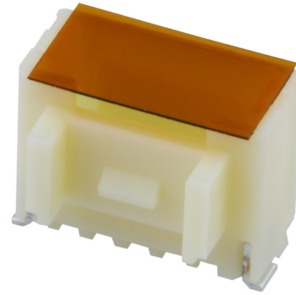
**Part Number :** [5019400407](#)

**Product Description :** 1.00mm Pitch, Pico-Clasp PCB Header, Single Row, Vertical, Surface Mount, 1.01µm Tin Plated, Outer Positive Lock, 4 Circuits, Natural

**Series Number :** 501940

**Status :** Active

**Product Category :** PCB Headers and Receptacles



---

## Documents & Resources

### Drawings

[Drawing 5019400407\\_sd.pdf](#)

### 3D Models and Design Files

[3D Model 5019400407\\_stp.zip](#)

### Specifications

[Packaging Specification SPK-501940-001-001.pdf](#)

[Product Specification 5019391000-PS-CHI-001.pdf](#)

[Product Specification 5019391000-PS-JAP-001.pdf](#)

[Product Specification 5019401001-PS-001.pdf](#)

[Product Specification PS-501940-001-001.pdf](#)

---

## Product Environment Compliance

### Compliance

GADSL/IMDS	Compliant with Exemption 44; 33
China RoHS	
EU ELV	Not Relevant
Low-Halogen Status	Not Low-Halogen per IEC 61249-2-21
REACH SVHC	Not Contained per D(2023)3788-DC (14 Jun 2023)
EU RoHS	Compliant per EU 2015/863

### [Multiple Part Product Compliance Statements](#)

- Eu RoHS
- REACH SVHC

- Low-Halogen

### Multiple Part Industry Compliance Documents

- IPC 1752A Class C
- IPC 1752A Class D
- Molex Product Compliance Declaration
- IEC-62474
- chemSHERPA (xml)

### EU RoHS Certificate of Compliance

---

## Part Details

### General

Status	Active
Category	PCB Headers and Receptacles
Series	501940
Description	1.00mm Pitch, Pico-Clasp PCB Header, Single Row, Vertical, Surface Mount, 1.01µm Tin Plated, Outer Positive Lock, 4 Circuits, Natural
Application	Signal, Wire-to-Board
Component Type	PCB Header
Product Family	Pico-Clasp Wire-to-Board Connectors
Product Name	Pico-Clasp
UPC	822350287043

### Electrical

Current - Maximum per Contact	1.5A
Voltage - Maximum	100V AC (RMS)/DC

### Physical

Breakaway	No
Circuits (Loaded)	4
Circuits (maximum)	4
Color - Resin	Natural
Durability (mating cycles max)	30
First Mate / Last Break	No

Glow-Wire Capable	No
Guide to Mating Part	No
Keying to Mating Part	None
Lock to Mating Part	Yes
Material - Metal	Phosphor Bronze
Material - Plating Mating	Tin
Material - Plating Termination	Tin
Material - Resin	Nylon
Net Weight	121.700/mg
Number of Rows	1
Orientation	Vertical
Packaging Type	Embossed Tape on Reel
PCB Locator	No
PCB Retention	Yes
Pitch - Mating Interface	1.00mm
Plating min - Mating	1.016µm
Plating min - Termination	1.016µm
Polarized to Mating Part	Yes
Polarized to PCB	No
Shrouded	Fully
Stackable	No
Temperature Range - Operating	-40° to +105°C
Termination Interface Style	Surface Mount

---

## Mates With / Use With

### Mates with Part(s)

Description	Part Number
1.00mm Pitch, Pico-Clasp Low-Halogen Single Row Receptacle Housings	<u>501939</u>

---

This document was generated on Jan 29, 2024