



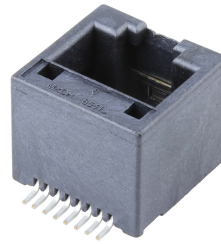
Part Number : [855135013](#)

Product Description : Modular Jack, Vertical, Top Entry, Surface Mount, 8/8, Low Profile, 13" Reel

Series Number : 85513

Status : Active

Product Category : Modular Jacks and Plugs



---

## Documents & Resources

### Drawings

[Drawing 855135013\\_sd.pdf](#)

### 3D Models and Design Files

[3D Model 855135013\\_stp.zip](#)

### Specifications

[Application Specification AS-85513-001-001.pdf](#)

[Product Specification PS-85513-002-001.pdf](#)

---

## Product Environment Compliance

### Compliance

GADSL/IMDS	Not Relevant
China RoHS	
EU ELV	Not Relevant
Low-Halogen Status	Low-Halogen per IEC 61249-2-21
REACH SVHC	Not Contained per D(2023)3788-DC (14 Jun 2023)
EU RoHS	Compliant per EU 2015/863

### Multiple Part Product Compliance Statements

- Eu RoHS
- REACH SVHC
- Low-Halogen

### Multiple Part Industry Compliance Documents

- IPC 1752A Class C
- IPC 1752A Class D

- Molex Product Compliance Declaration
- IEC-62474
- chemSHERPA (xml)

EU RoHS Certificate of Compliance

---

## Part Details

### General

Status	Active
Category	Modular Jacks and Plugs
Series	85513
Description	Modular Jack, Vertical, Top Entry, Surface Mount, 8/8, Low Profile, 13" Reel
Comments	Reflow Capable, Small Panel Cutout
Component Type	PCB Jack
Magnetic	No
Performance Category	3
Power over Ethernet (PoE)	N/A
Product Family	Magnetic and Modular Jacks/Plugs
Product Name	Modular Jack 8/8,RJ45
UPC	822350834544

### Agency

UL	E107635
----	---------

### Electrical

Current - Maximum per Contact	1.5A
Shielded	No
Voltage - Maximum	125V DC

### Physical

Boot Color	N/A
Color - Resin	Black
Durability (mating cycles max)	2500
Flammability	94V-0
Inverted / Top Latch	No

Jack Height	12.70mm
Lightpipes/LEDs	None
Material - Metal	Copper Alloy
Material - Plating Mating	Gold over Palladium Nickel
Material - Plating Termination	Tin
Material - Resin	High Temperature Thermoplastic
Net Weight	2.600/g
Orientation	Vertical (Top Entry)
Packaging Type	Embossed Tape on Reel
PCB Locator	No
PCB Retention	Yes
Pitch - Mating Interface	1.02mm
Pitch - Termination Interface	1.27mm
Plating min - Mating	0.051µm, 1.016µm
Plating min - Termination	1.905µm
Port Configuration	1x1
Positions / Loaded Contacts	8/8
Temperature Range - Operating	-40° to +85°C
Termination Interface Style	Surface Mount
Waterproof / Dustproof	No
Wire/Cable Type	N/A

### Solder Process Data

Max-Duration	45
Lead-Free Process Capability	REFLOW
Max-Cycle	3
Max-Temp	260

---

This document was generated on Dec 09, 2023