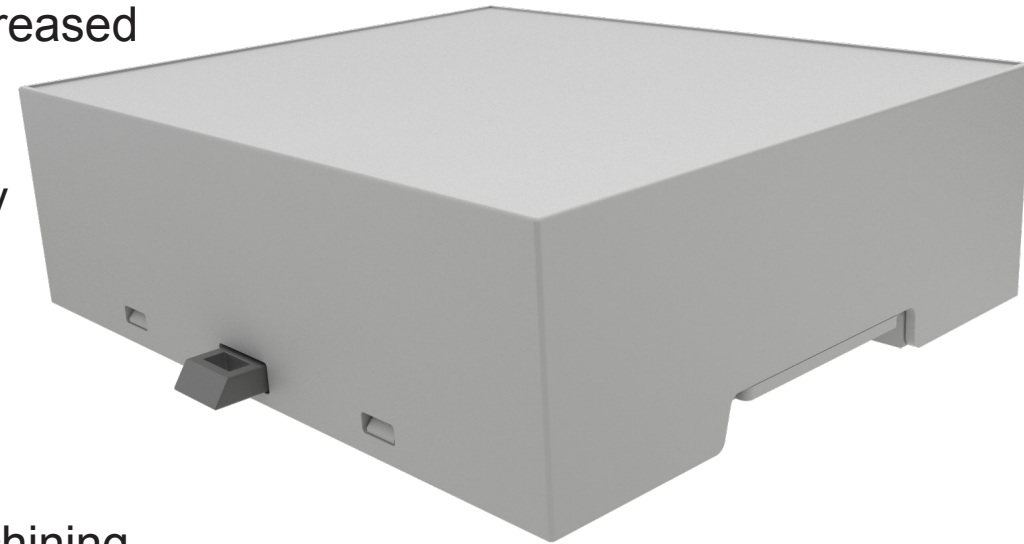
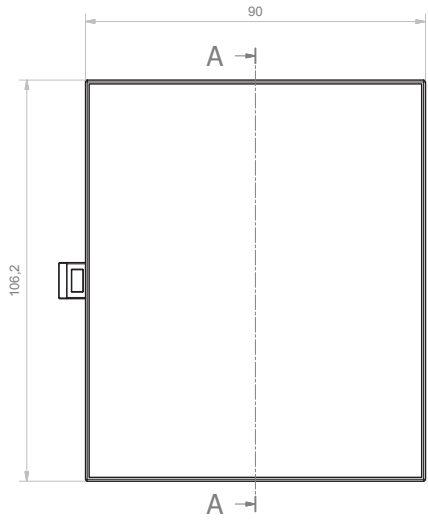
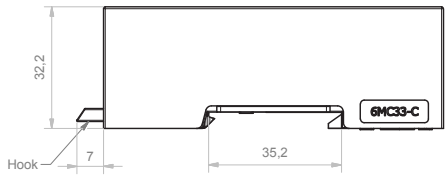


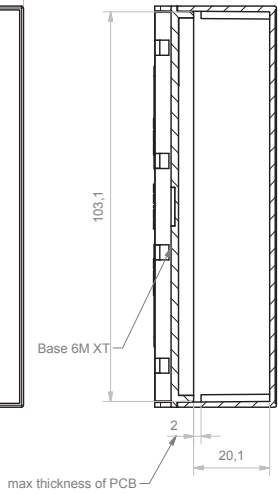
- DIN Rail mounting enclosure to suit varying electronic and electrical applications
- The enclosure has two high shoulders offering increased volume for components
- Openings for inputs/outputs can be cost effectively machined to customer specific requirements.
- Top panel is produced as part of the mould (non-removeable)
- Customisation options are available including machining and/or printing to customer specific requirements



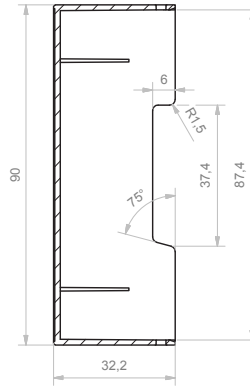
**Assembly**



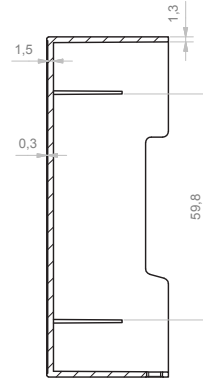
**A-A (1:1)**



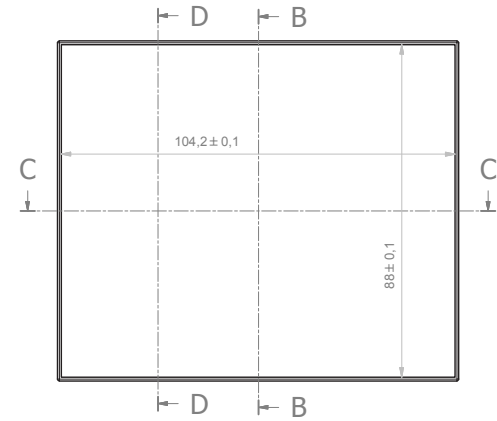
**D-D (1:1)**



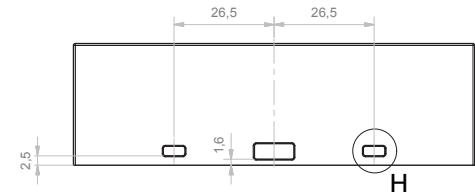
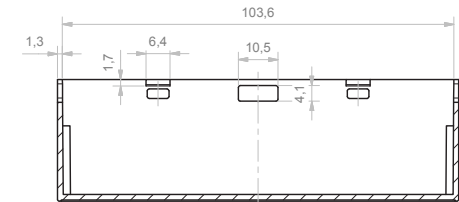
**B-B (1:1)**



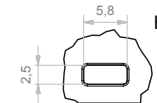
**Body enclosure**



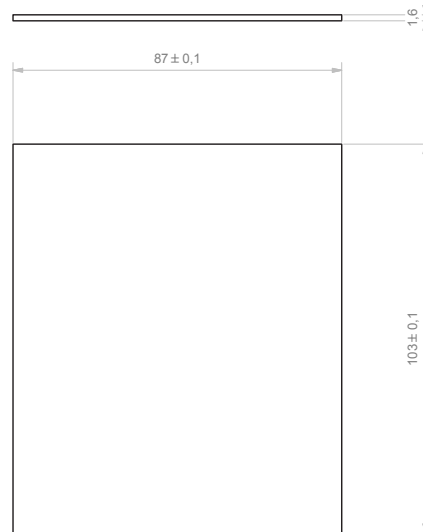
**C-C (1:1)**



**H (2:1)**



**Dimension of PCB**



Da 0,5 a 3	Oltre 3 fino a 6	Oltre 6 fino a 30	Oltre 30 fino a 120	Oltre 120
± 0,1	± 0,1	± 0,2	± 0,3	± 0,5

**RESERVED PROPERTY**  
The present drawing cannot be reproduced or communicated to 3rd parties, even partially, without the authorization of ITALTRONIC S.p.A. Italtronic reserves to protect its own rights according to the law.

Dimension in mm  
SHEET NR. 1 / 1  
Date: 14/02/2014

DRAWING BY: [Logo]  
GENERAL TOLERANCE: **UNI EN 22768/1 Media (m)**  
Replace nr.

Drawn: Rigato N. Checked: Dalla Montà D. Scale:

Denomination: **Contenitore Modulbox XTS 6MC33-C chiuso compact**  
**Enclosure Modulbox XTS 6MC33-C closed compact**

**Hitaltech**  
A group of connecting technologies  
**Italtronic**  
...the value container

**ITALTRONIC S.R.L.**  
VIA AUSTRIA 25/D 35127  
PADOVA - ITALY  
www.italtronic.com

Drawing nr. **M-05180-01**

Aggiunto vista corpo e modificato contenitore. 09/05/2014 Rigato N.

5	4	3	2	1
---	---	---	---	---

Revision description