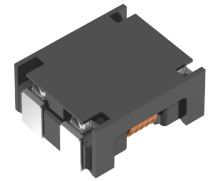


<b>Applications</b>	Commercial Grade
<b>Feature</b>	Wire Wound
	Power Line
<b>Series</b>	ACM
<b>Status</b>	Production
<b>Brand</b>	TDK



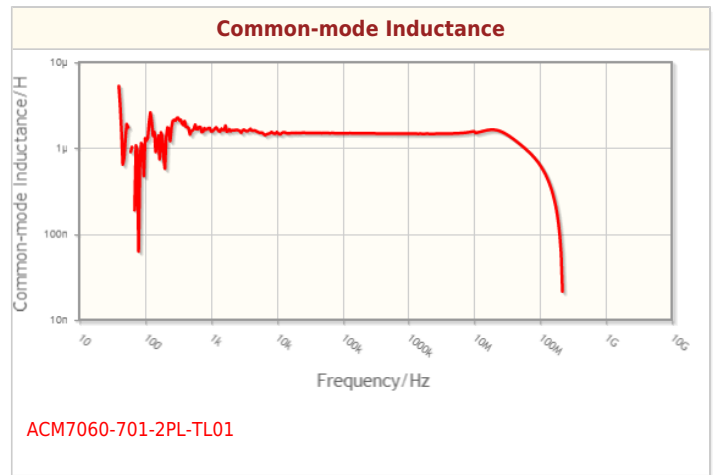
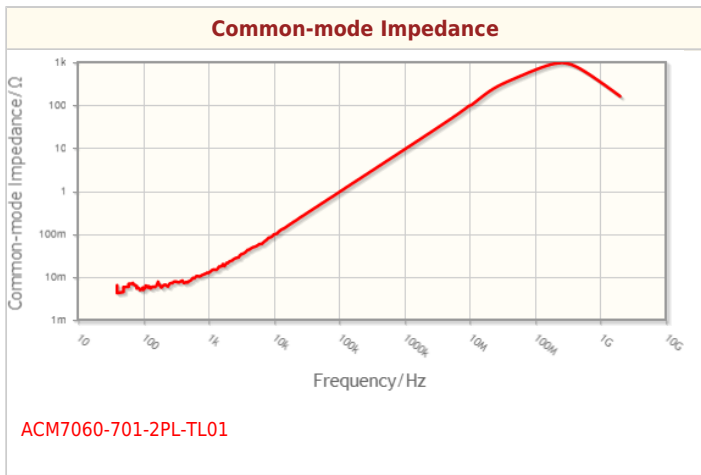
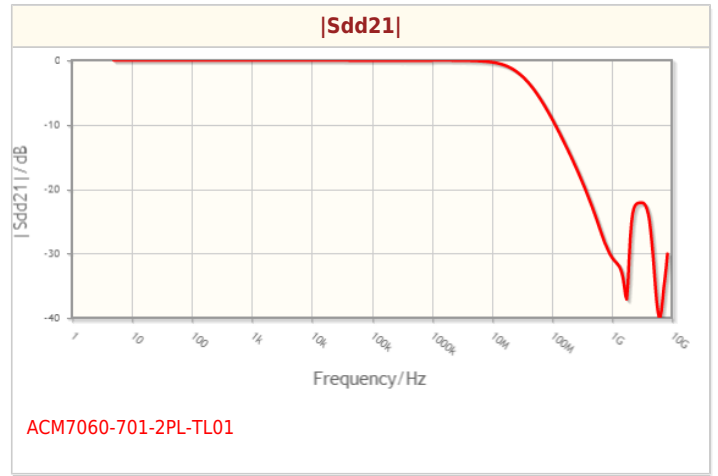
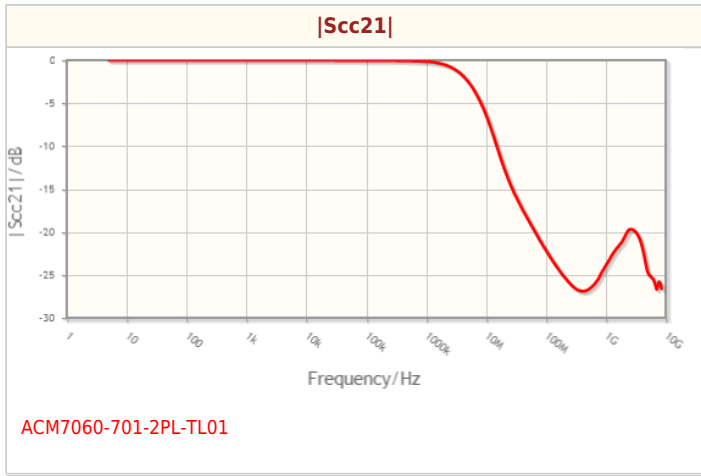
Size	
Length(L)	7.00mm ±0.20mm
Width(W)	6.00mm ±0.20mm
Thickness   Height	3.50mm Max.

Electrical Characteristics	
Common-mode Impedance [Typ.]	700Ω at 100MHz
Common-mode Impedance [Min.]	500Ω at 100MHz
Common-mode Inductance	1.5μH at 1MHz (Ref.)
Rated Current	4A
Rated Voltage	80VDC
Insulation Resistance [Min.]	10MΩ
DC Resistance	15mΩ Max.

Other	
Operating Temp. Range	-40 to 85°C
Soldering Method	Reflow
	Iron Soldering
AEC-Q200	NO
Packing	Embossed (Plastic)Taping [330mm Reel, Tape width 16mm]
Package Quantity	1500pcs
Weight	0.35g

! Images are for reference only and show exemplary products.  
! This PDF document was created based on the data listed on the TDK Corporation website.  
! All specifications are subject to change without notice.

Characteristic Graphs(This is reference data, and does not guarantee the products characteristics.)



! Images are for reference only and show exemplary products.  
! This PDF document was created based on the data listed on the TDK Corporation website.  
! All specifications are subject to change without notice.

## Associated Images

