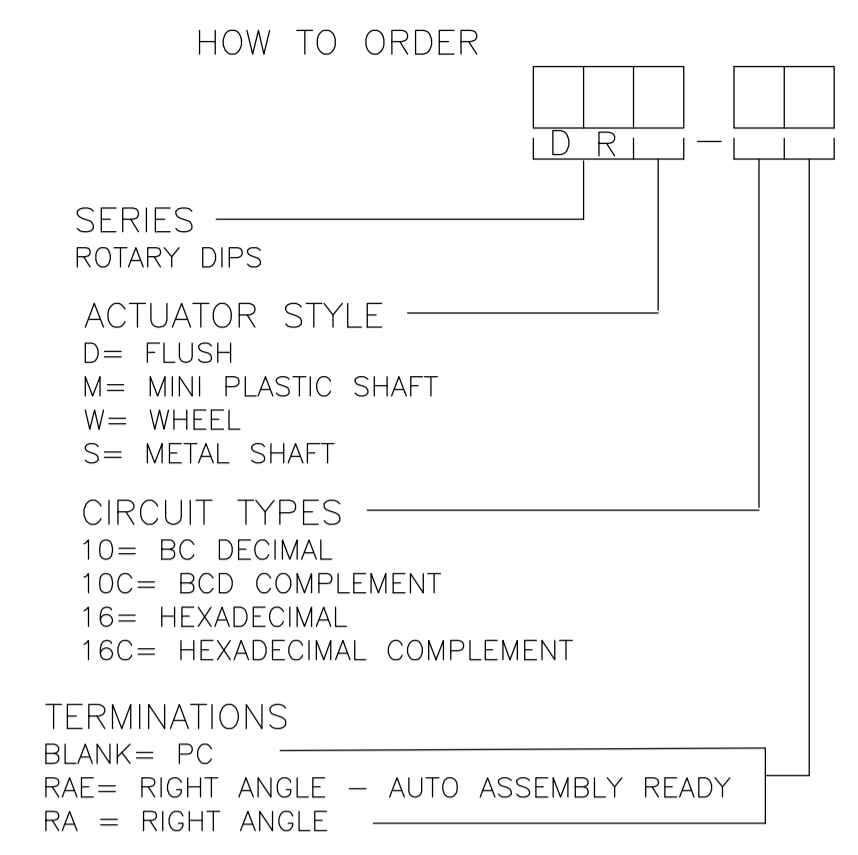


DRD RIGHT ANGLE  
PC MOUNT



**SPECIFICATIONS:**

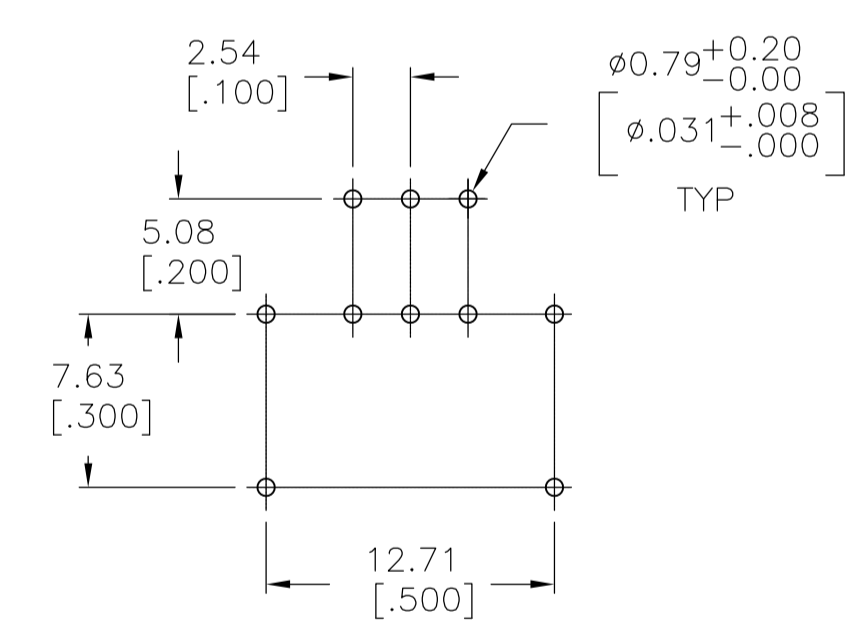
**MATERIAL:**  
 FRAME & CASE- PPS UL94V-0, BLACK  
 ROTOR, PA6T UL94V-0, COLOR SEE P/N TABLE  
 FIXED CONTACT/TERMINAL- COPPER ALLOY, GOLD FLASH OVER NICKEL PLATE  
 MOVING CONTACT- COPPER ALLOY, GOLD FLASH OVER NICKEL PLATE  
 BALL SUPPORT PLATE- COPPER ALLOY  
 BALL- STAINLESS STEEL  
 DETENT SPRING- STAINLESS STEEL  
 BUSHING (DRS)- ZINC DIE CAST  
 SHAFT (DRS)- COPPER ALLOY- NICKEL PLATE

**ELECTRICAL:**  
 CONTACT RATING- 0.4VA@ 20V DC OR PEAK AC  
 INITIAL CONTACT RESISTANCE- 50 MILLIOHMS MAX  
 INSULATION RESISTANCE- 1,000 MEGOHMS@100V DC  
 DIELECTRIC STRENGTH- 300V AC  
 LIFE EXPECTANCY- 10,000 ROTATIONS

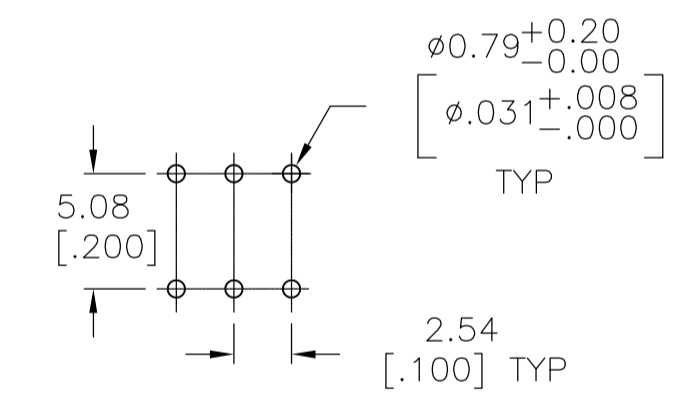
**MECHANICAL:**  
 OPERATING FORCE- 13.88 OZF.IN. MAX

**ENVIRONMENTAL:**  
 OPERATING TEMPERATURE- -30°C TO +85°C  
 STORAGE TEMPERATURE- -45°C TO +100°C  
 RESISTANCE TO SOLDER HEAT-PER 109-202, COND B (THRU-HOLE)  
 SOLDERABILITY-PER JIS C 0050 & JIS C 0053

- NOTES:**
- ALL MATERIALS AND FINISHES SHALL COMPLY WITH EU DIRECTIVE 2002/95/EC OF 27JAN2003 (ROHS)
  - COMMON TERMINALS ARE CONNECTED INTERNALLY, EXCEPT ON HYBRID VERSIONS.
  - RED ROTOR WITH WHITE PRINTING ON TOP AND SIDE OF SWITCH. "S" STYLES HAVE NOT PRINTING ON TOP.
  - BLACK ROTOR WITH WHITE PRINTING ON TOP AND SIDE OF SWITCH. "S" STYLES HAVE NO PRINTING ON TOP.
  - ORANGE ROTOR WITH WHITE PRINTING ON TOP AND SIDE OF SWITCH "S" STYLES HAVE NO PRINTING ON TOP.
  - WHITE ROTOR WITH WHITE PRINTING ON TOP AND SIDE OF SWITCH "S" STYLE HAVE NO PRINTING ON TOP.
- △ LOCATE 'ALCO' TRADE NAME AND LOT NUMBER MARKING. LOT NUMBER TO BE MARKED AS FOLLOW:
- 4                      F  
 1ST DIGIT    2ND DIGIT  
 YEAR 1194    MONTH 6
- MARK WITH PERMANENT WHITE INK.



"S" STYLE



MINI SHAFT  
FLUSH  
WHEEL

PRINTED CIRCUIT BOARD LAYOUTS

|             |             |             |
|-------------|-------------|-------------|
| BLACK       | DRW16RAE04  | 1-1825008-6 |
| WHITE       | DRW16CRAE04 | 1-1825008-5 |
| RED         | DRW10RAE04  | 1-1825008-4 |
| ORANGE      | DRW10CRAE04 | 1-1825008-3 |
| N/A         | DRS16RA04   | 1-1825008-2 |
| N/A         | DRS16CRA04  | 1-1825008-1 |
| N/A         | DRS10RA04   | 1-1825008-0 |
| N/A         | DRS10CRAE04 | 1825008-9   |
| BLACK       | DRM16RAE04  | 1825008-8   |
| WHITE       | DRM16CRAE04 | 1825008-7   |
| RED         | DRM10RAE04  | 1825008-6   |
| ORANGE      | DRM10CRAE04 | 1825008-5   |
| BLACK       | DRD16RAE04  | 1825008-4   |
| WHITE       | DRD16CRAE04 | 1825008-3   |
| RED         | DRD10RAE04  | 1825008-2   |
| ORANGE      | DRD10CRAE04 | 1825008-1   |
| ROTOR COLOR | T&B P/N     | PART NO.    |

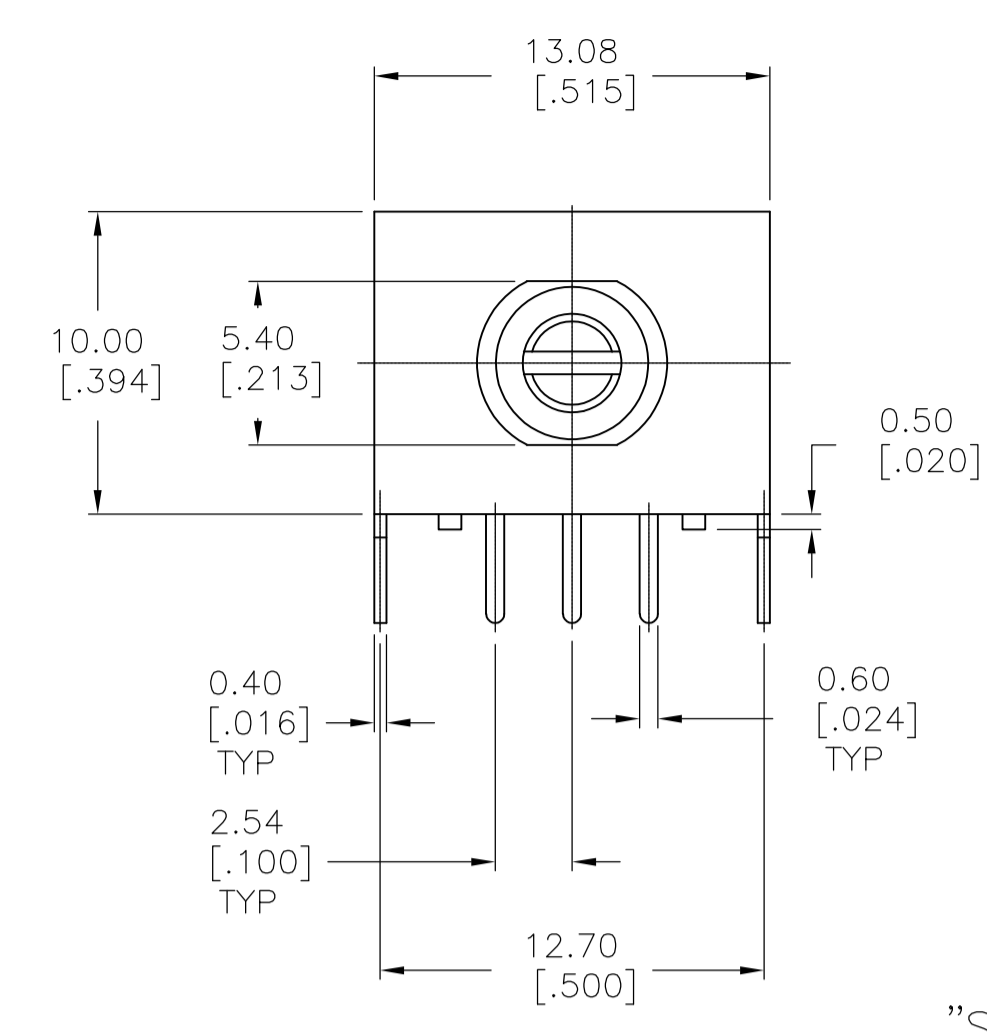
THIS DRAWING IS A CONTROLLED DOCUMENT. DIN 9139, VISWESWARA 17MAY2005  
 CHK: M.S.SARVER  
 APVD: M.S.SARVER

| DIMENSIONS: | TOLERANCES UNLESS OTHERWISE SPECIFIED:                                               | PRODUCT SPEC |
|-------------|--------------------------------------------------------------------------------------|--------------|
| mm [INCHES] | 0. PLC ± -<br>1. PLC ± -<br>2. PLC ± 0.25<br>3. PLC ± -<br>4. PLC ± -<br>ANGLES ± 1' |              |

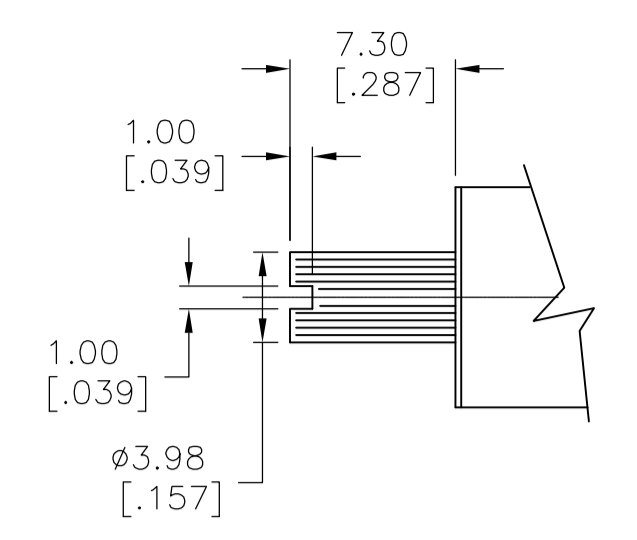
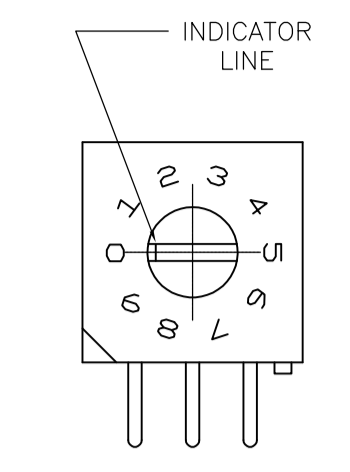
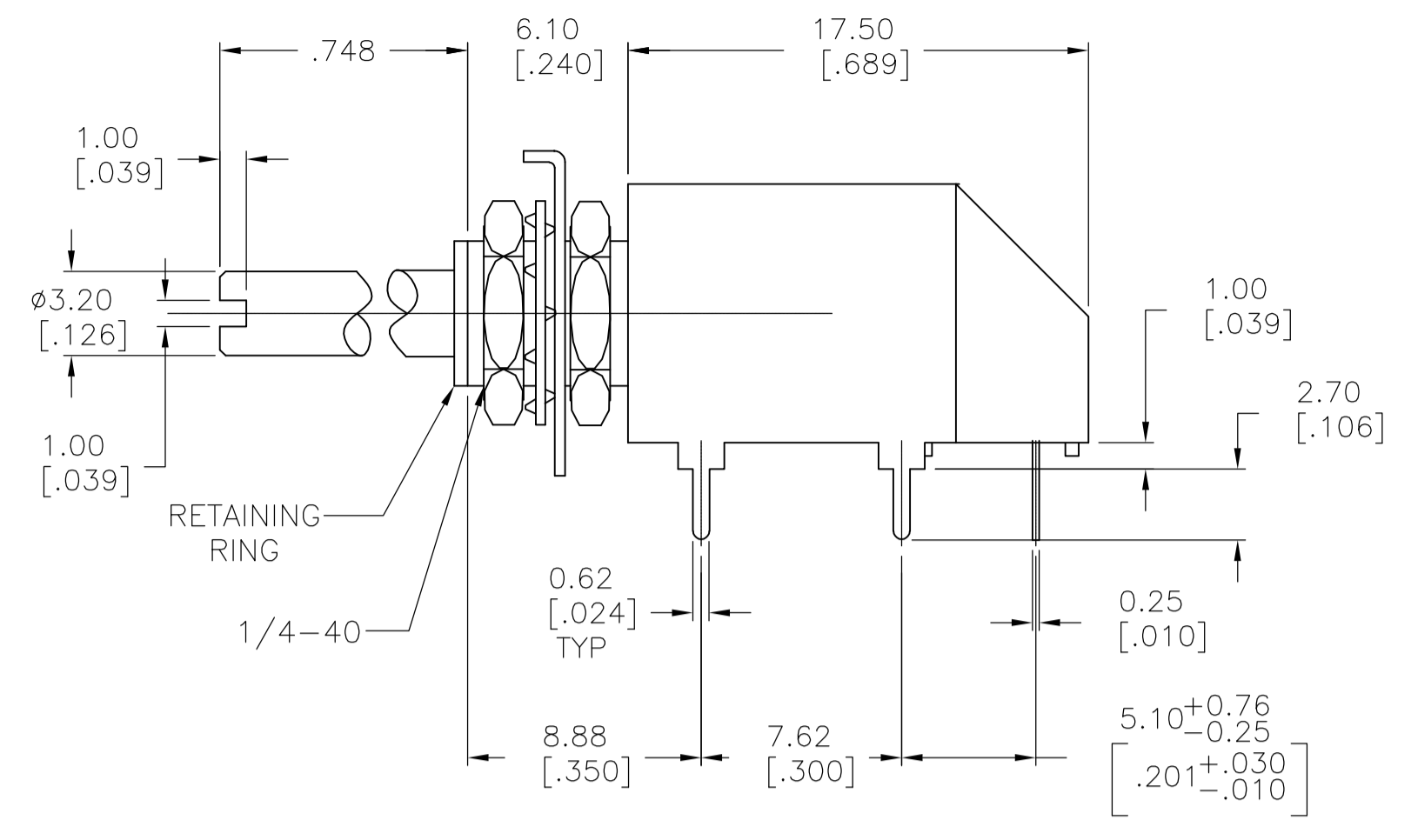
MATERIAL: - FINISH: - WEIGHT: -

SIZE: A1 CAGE CODE: 00779 DRAWING NO: 1825008 RESTRICTED TO: -  
 CUSTOMER DRAWING SCALE: 4:1 SHEET: 1 OF 2 REV: A4

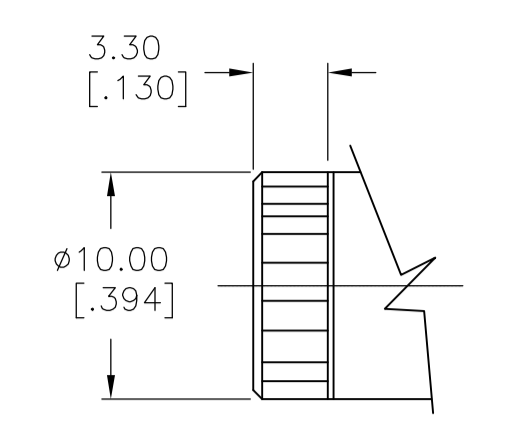
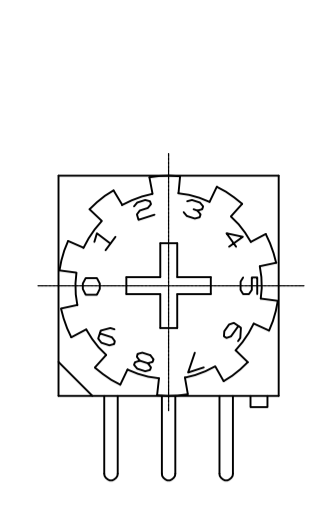
**STE** TE Connectivity  
 DR\*\*\*RA SERIES ROTARY DIP SWITCH



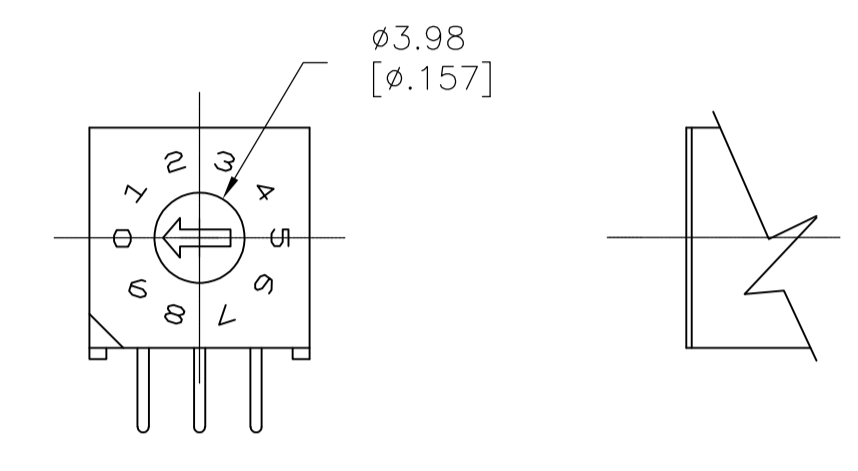
"S" STYLE



MINI SHAFT  
'M' STYLE

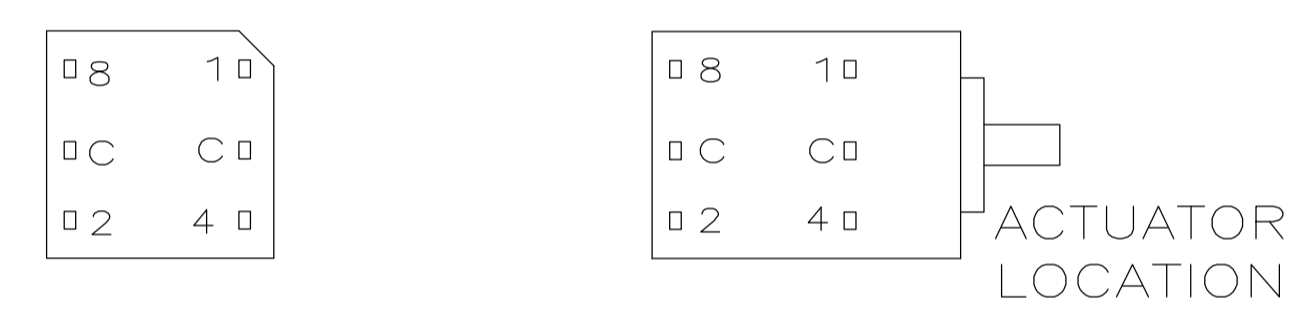


WHEEL  
'W' STYLE



'D' STYLE

TERMINAL IDENTIFICATION FOR DR SERIES ONLY  
(VIEWED FROM BOTTOM OF SWITCH)



ACTUATORS  
SCALE:3:1

10-POSITION, BCD SEE NOTE 3

| POS | 0 | 1 | 2 | 3 | 4 | 5 | 6 | 7 | 8 | 9 |
|-----|---|---|---|---|---|---|---|---|---|---|
| C   | X | X | X | X | X | X | X | X | X | X |
| 1   |   | X |   | X |   | X |   | X |   | X |
| 2   |   |   | X | X |   |   | X | X |   |   |
| 4   |   |   |   |   | X | X | X | X |   |   |
| 8   |   |   |   |   |   |   |   |   | X | X |

16-POSITION, HEXADECIMAL SEE NOTE 4

| POS | 0 | 1 | 2 | 3 | 4 | 5 | 6 | 7 | 8 | 9 | A | B | C | D | E | F |
|-----|---|---|---|---|---|---|---|---|---|---|---|---|---|---|---|---|
| C   | X | X | X | X | X | X | X | X | X | X | X | X | X | X | X | X |
| 1   |   | X |   | X |   | X |   | X |   | X |   | X |   | X |   | X |
| 2   |   |   | X | X |   |   | X | X |   |   | X | X |   |   | X | X |
| 4   |   |   |   |   | X | X | X | X |   |   |   |   | X | X | X | X |
| 8   |   |   |   |   |   |   |   |   | X | X | X | X | X | X | X | X |

10 POSITION, BCD COMPLEMENT SEE NOTE 5

| POS | 0 | 1 | 2 | 3 | 4 | 5 | 6 | 7 | 8 | 9 |
|-----|---|---|---|---|---|---|---|---|---|---|
| C̄  | X | X | X | X | X | X | X | X | X | X |
| 1̄  | X |   | X |   | X |   | X |   | X |   |
| 2̄  | X | X |   |   | X | X |   |   | X | X |
| 4̄  | X | X | X | X |   |   |   |   | X | X |
| 8̄  | X | X | X | X | X | X | X | X |   |   |

16-POSITION, HEXADECIMAL COMPLEMENT SEE NOTE 6

| POS | 0 | 1 | 2 | 3 | 4 | 5 | 6 | 7 | 8 | 9 | A | B | C | D | E | F |
|-----|---|---|---|---|---|---|---|---|---|---|---|---|---|---|---|---|
| C̄  | X | X | X | X | X | X | X | X | X | X | X | X | X | X | X | X |
| 1̄  | X |   | X |   | X |   | X |   | X |   | X |   | X |   | X |   |
| 2̄  | X | X |   |   | X | X |   |   | X | X |   |   | X | X |   |   |
| 4̄  | X | X | X | X |   |   |   |   | X | X | X | X |   |   |   |   |
| 8̄  | X | X | X | X | X | X | X | X |   |   |   |   |   |   |   |   |

|                                        |  |                                        |  |                  |  |
|----------------------------------------|--|----------------------------------------|--|------------------|--|
| THIS DRAWING IS A CONTROLLED DOCUMENT. |  | DIN 17MAY2005                          |  | TE Connectivity  |  |
| DIMENSIONS: mm [INCHES]                |  | TOLERANCES UNLESS OTHERWISE SPECIFIED: |  | NAME             |  |
| 0 PLC ± -                              |  | 1 PLC ± -                              |  | M.S.SARVER       |  |
| 1 PLC ± -                              |  | 2 PLC ± 0.25                           |  | PRODUCT SPEC     |  |
| 2 PLC ± -                              |  | 3 PLC ± -                              |  | APPLICATION SPEC |  |
| 3 PLC ± -                              |  | 4 PLC ± -                              |  | SIZE             |  |
| 4 PLC ± -                              |  | ANGLES ± 1°                            |  | CAGE CODE        |  |
| MATERIAL                               |  | FINISH                                 |  | DRAWING NO       |  |
|                                        |  |                                        |  | A1 00779         |  |
|                                        |  |                                        |  | DRAWING NO       |  |
|                                        |  |                                        |  | C=1825008        |  |
|                                        |  |                                        |  | RESTRICTED TO    |  |
|                                        |  |                                        |  | CUSTOMER DRAWING |  |
|                                        |  |                                        |  | SCALE 4:1        |  |
|                                        |  |                                        |  | SHEET 2 OF 2     |  |
|                                        |  |                                        |  | REV A4           |  |