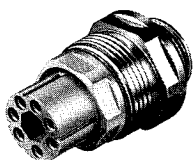


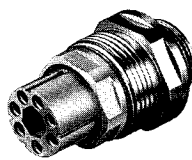
6-pole + ⊕

Protection class IP 65
 DIN 43651

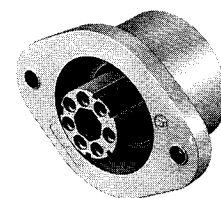
N 6 R AF



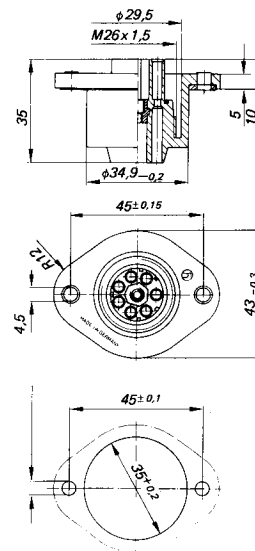
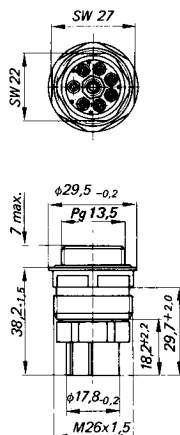
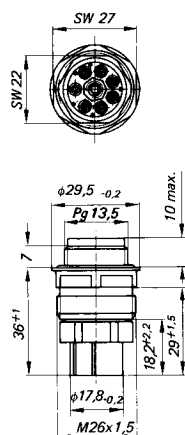
N 6 R AF 5



N 6 R BFE



Electrical data, refer to page 44



SW = Width across

Technical data			
Design/Description	Panel-mounted socket with screw-in metal casing	Panel-mounted socket with metal screw-in insert in casing (metal segment)	Panel-mounted socket with flange
Corresp. to DIN designation	DIN 43651 AF 6-22	DIN 43651 AF 6-22	(similar to DIN 43651 BF 6-22)
Number of poles	6 + ⊕	6 + ⊕	6 + ⊕
Type of connection	crimp	crimp	crimp
Corresponding contacts	Socket contacts RBC 162	Socket contacts RBC 162	Socket contacts RBC 162
Scope of supply	1 panel-mounted socket, not assembled, in polythene bag with assembly instructions	1 panel-mounted socket, not assembled, in polythene bag with assembly instructions	1 contact bearer with gasket in polythene bag
Colour of casing	grey	grey	grey
Can be plugged into	N 6 R FM R, N 6 R EM, N 6 R DM	N 6 R FMR, N 6 R EM, N 6 R DM	N 6 R FMR, N 6 R EM, N 6 R DM
Screw-in thread	Pg 13.5	Pg 13.5	

Order data			
Type	N 6 R AF	N 6 R AF 5	N 6 R BFE
Order number	931 855-001	932 164-001	931 730-106
Quantity boxed	10 each	10 each	10 each

Accessories – must be ordered separately							
	Page	Type	Order no.	Type	Order no.	Type	Order no.
Coding	51	NC 6	831 002-011	NC 6	831 002-011	NC 6	831 002-011
Protective cover	57	SHK 2	733 845-001	SHK 2	733 845-001		

Crimping contacts and tools are described on page 221 onwards.