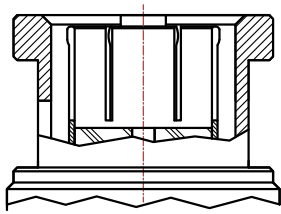


Revisions

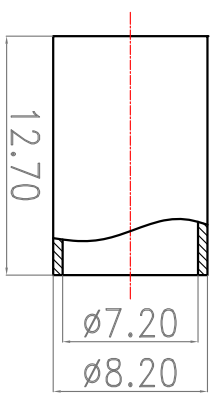
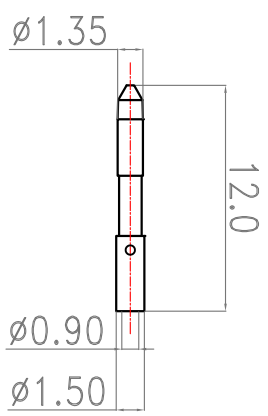
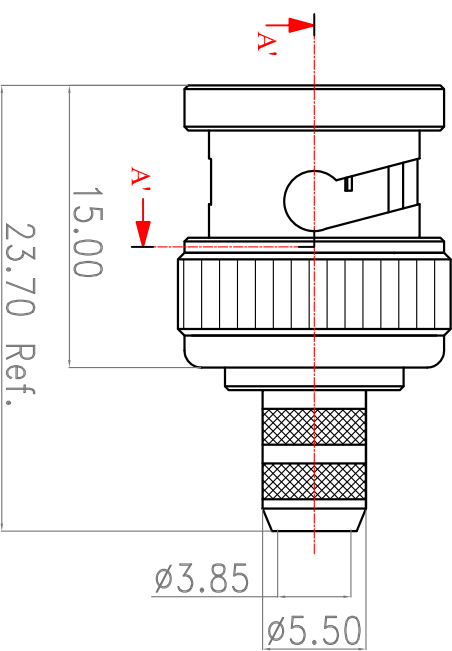
ISS	Symbol	Description	Date
B		CHF for New Drawing Frame & New PN System	2008/04/11
B-1		Add Die Set Views on Drawing.	2008/04/11

Note :

1. Single Crimp: Providing recommended dimensions for ferrule.
2. All metal material is in compliance with RoHS Directive 2002/95/EC Annex 4 (1) Section 6 paragraph.
3. Recommended Crimped Hand Tool : for Ferrule P/N - **HT-301G4**



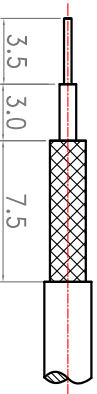
Section A-A' 75 ohm



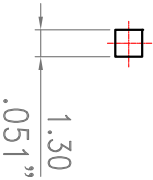
Outline Drawing



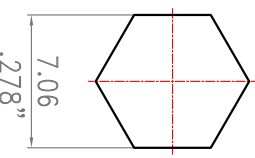
Van Damme code 339-275-300
RS code 7682182



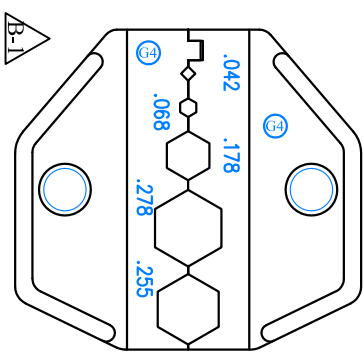
Recommended Cable Stripping Dimensions



Recommended Crimped Dimensions for Center Pin



Recommended Crimped Dimensions for Ferrule



HT-301G4 Die Set with 5 Dies

Scale = 1:2