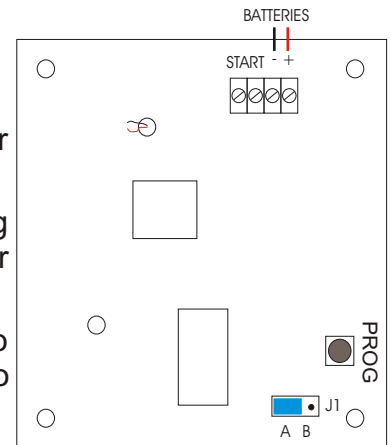


Stop 'n' Search TAG2 Installation Instructions

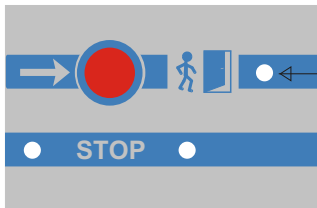
- ❖ Fit the batteries in the battery holder in the backbox. Observe polarity.
- ❖ When first powered the all indicators illuminate and the buzzer bleeps twice to demonstrate that all is well.
- ❖ The factory default selection rate is 20%. However the unit has an Non Volatile Memory (NVM) to store the latest selection rate even if power is lost or batteries replaced.
- ❖ Press the panel button to start selection.
- ❖ A green indication with a 'Whoop Whoop', tone indicates not selected.
- ❖ Both red STOP indicators with a pulsed alarm tone indicates selected.

To set the selection rate, (the percentage of people to be searched)

- ❖ Move jumper J1 from position B to position A.
- ❖ The indication on the front panel indicates the current setting.
- ❖ Repeatedly press the PROG button to change selection rate for that range.
- ❖ Press the front panel button to change ranges. When changing ranges, the unit single bleeps for Range 1 and double bleeps for Range 2.
- ❖ Once the required rate is displayed, move the jumper J1 back to position B. The unit sounds the 'Whoop Whoop' tone and is ready to use with the new selection rate.

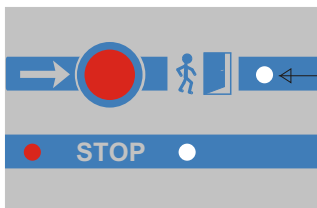


Range 1



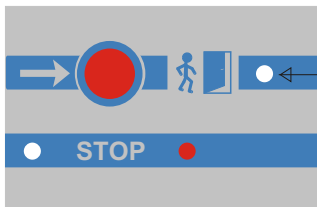
Single flash every 2 seconds

2 %



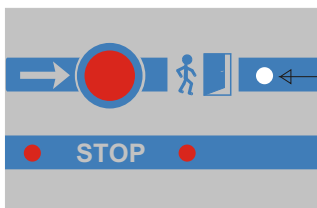
Single flash every 2 seconds

5 %



Single flash every 2 seconds

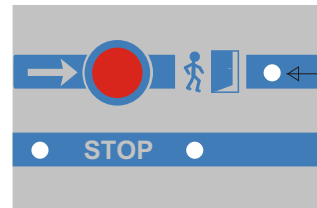
10 %



Single flash every 2 seconds

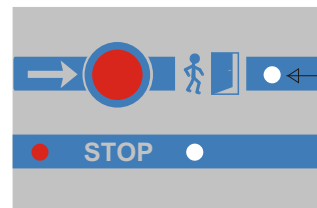
20 %

Range 2



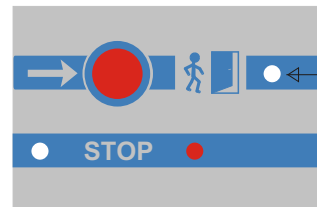
Double flash every 2 seconds

30 %



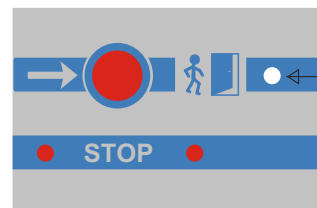
Double flash every 2 seconds

50 %



Double flash every 2 seconds

70 %



Double flash every 2 seconds

90 %



Hoyles Electronic Developments Ltd

T. 01744 886600 F. 01744 886607 E. sales@hoyles.com W. www.hoyles.com

DWG No 60085 Nov 09