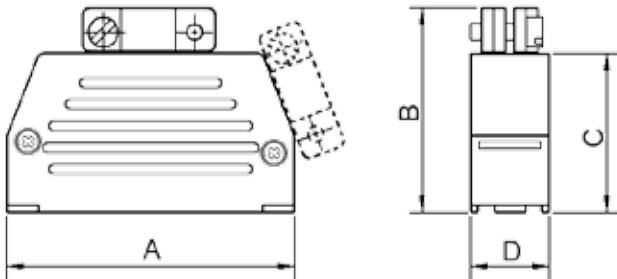


TECHNICAL SPECIFICATIONS

Material: UL 94 V-0 Plastic Material
Operating Temperature: -55°C to +110°C
Cable Entry: Top + Side Entry
Cable O.D: Up to 9mm
Colour: Black



Features:

- Suitable for sizes 9, 15, 25, 37 and 50-way
- Easy to re-open
- Slide-Lock system integrated inside hood with special spring and slide lever
- Hoods are supplied complete with Slide-Lock system
- Slide-Lock and Spring Lever also available as accessories - Please see page 187
- Hood without Slide-Lock delivered on request
- Metalized version available on special request

Size	A	B	C	D
9	32,2	28,6	22,1	15,0
15	39,8	34,1	26,1	15,0
25	54,2	38,3	30,3	15,0
37	70,7	46,2	38,2	15,0
50	68,0	46,2	38,2	18,0

Ordering information: Hood with Slide-Locks

Size:	P/N - Kitted:	Product Code:
9-way	2801-0101-01	MHED-DS09S-K
15-way	2801-0101-02	MHED-DS15S-K
25-way	2801-0101-03	MHED-DS25S-K
37-way	2801-0101-04	MHED-DS37S-K
50-way	2801-0101-05	MHED-DS50S-K