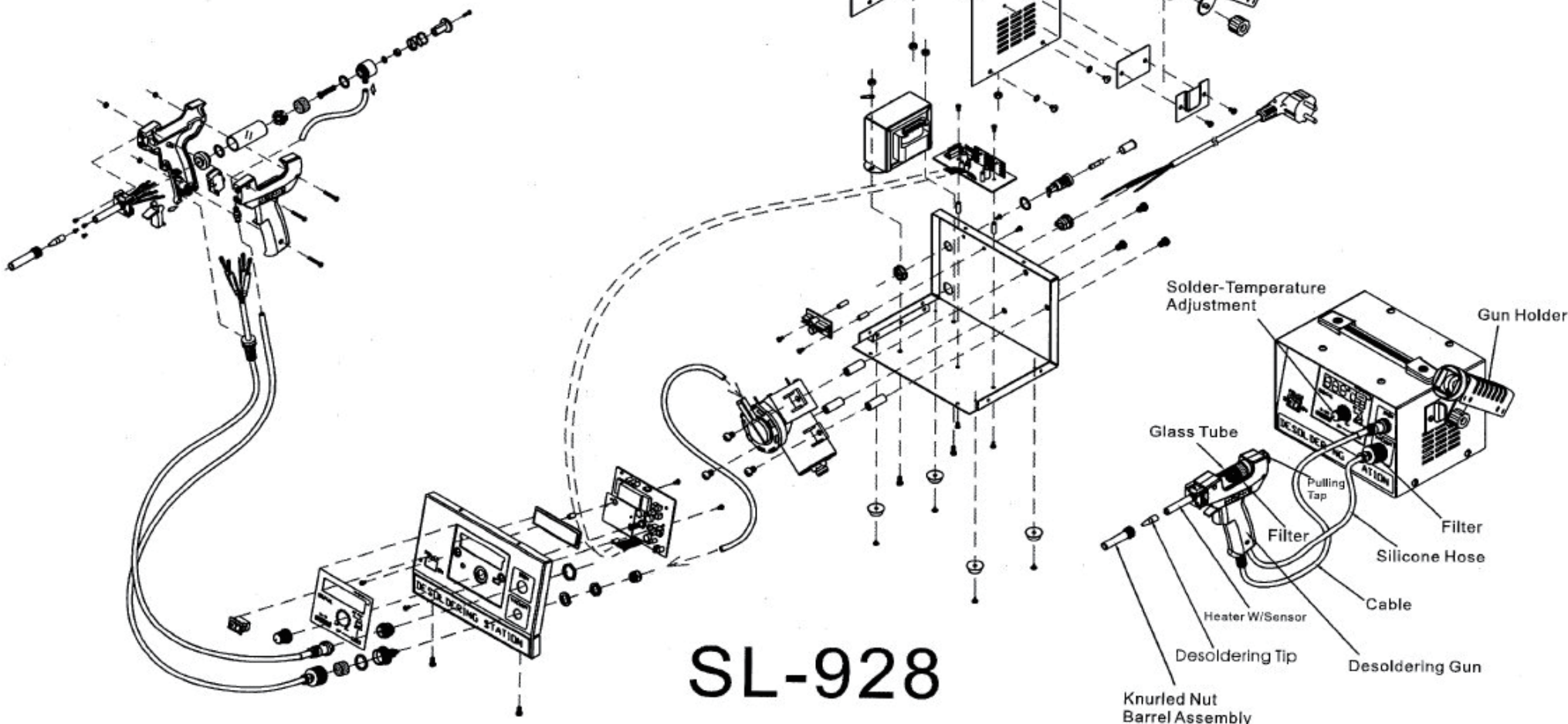


| | | |
|------------------------------|----------------------------|--------------------|
| Voltage | 110/120V AC or 220/240V AC | |
| Power consumption | 50W | |
| Temp.setting range | 210°C~480°C 410°F~900°F | |
| Heater Operating Voltage | 24V AC | |
| Size | Handpiece | 200 mm |
| | Station | L218:W176:H145(mm) |
| Weight | 4400g | |
| Station-Handpiece cordlength | 115cm | |
| AC Power Cord | 3pin plug 180cm | |
| Vacuum pump | -500mmHg 24V AC | |



SL-928

Operation Instructions:

1. Insert plug into
2. Put the power switch on the location of "ON".
The indicator lightens, then wait 5 minutes before using in order to avoid nozzle and pipe to be blocked by tin chip and due to insufficient heating.
3. If there is any tin chip blocked in the nozzle and pipe, please wait 5 minutes after the power switch lightens, put needle into nozzle and pipe and clean left articles by pulling back and forth.
(do cleaning when the vacuum pump starts.)
4. Put the nozzle on the tin, which you intend to take for 2-3 seconds, and shake the nozzle, then the pins of IC will move and tins have been melted.

After tin is melted, press the trigger and start vacuum pump, then tin will be immediately absorbed. If tin is not completely melted, the tin can not be cleaned, of course parts are not able to be taken down. In this case, please add some solder and repeat the a/m operation instruction.

Maintenance:

Replacement of Filter

If tins are filled in the filtering pipe, the vacuum pressure will be decreased. Please replace according to the following instructions:

1. Put the button of "PULL" backward, rotate 90° and then fix it.
2. You can take out filter by pulling the pipe backward and moving away from the location of "O" ring.
3. Clean the tin chip in filtering pipe.

4. If there is too much tin in the first layer steel fibre filter and the filter has been used many times, please replace a new one. Please also replace a new filter, when the second-layer-filter absorbs soldering flux fully.

5. When doing replacement, the first layer steel fibre filter should be put beside the nozzle and the beside the pump.

* Please do not use vacuum pump, if there is no filter. The vacuum pump will be out of order, when you start vacuum pump without putting filter in. Please do not use the desolder, when the filter is not installed.

* If the supply cord is damaged, it must be replaced by the manufacturer, its service agent or similarly qualified persons in order to avoid a hazard.