



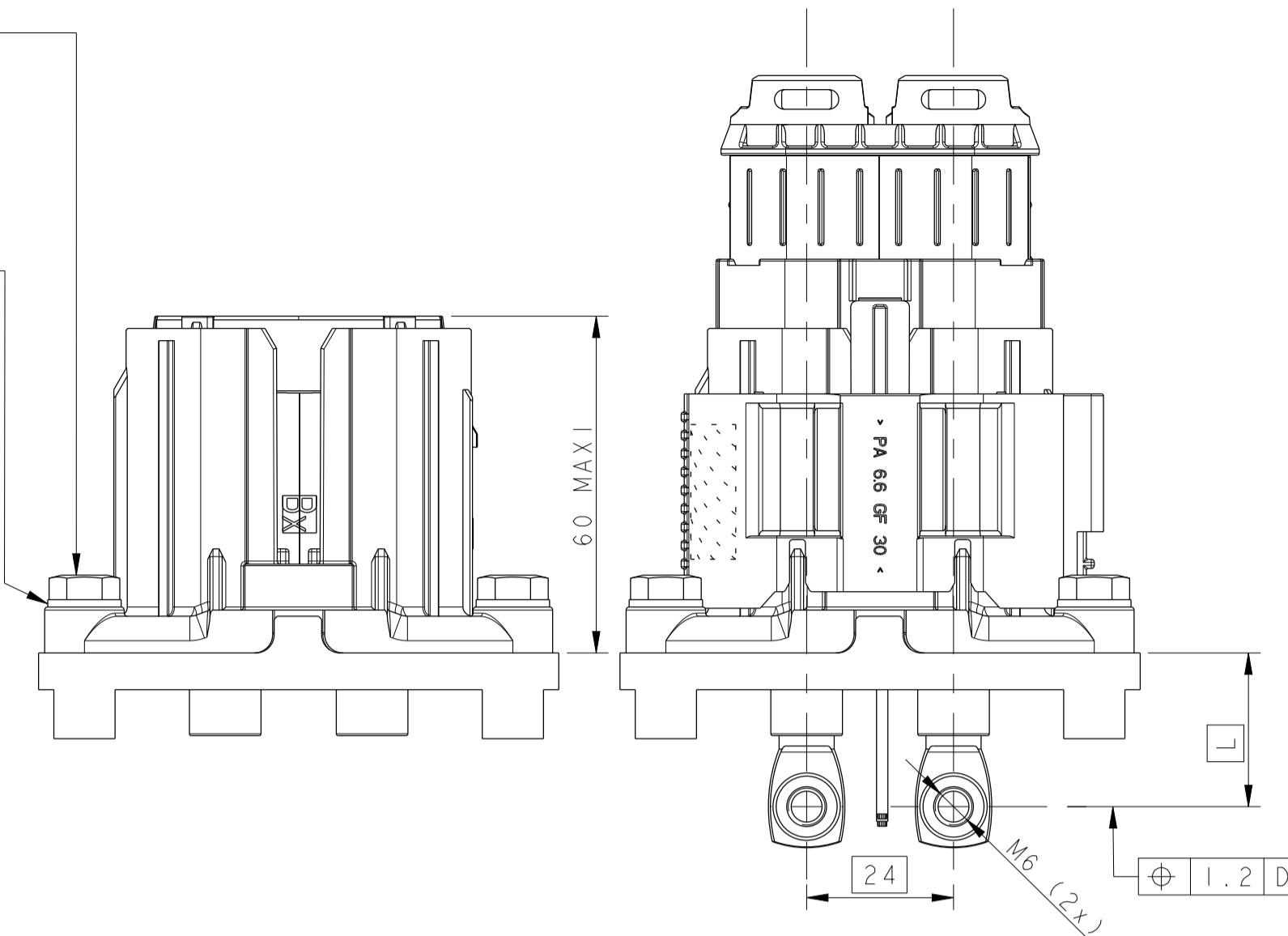


ENCOMBREMENT POUR MONTABILITE DU PORTE-CLIPS SUR EMBASE  
 FREE SPACE AREA NEEDED TO MATE AND UNMATE THE PLUG ON THE HEADER

4x VIS H M6, CLASSE 8.8 SUIVANT NORME E25-30  
 4x SCREWS H M6, 8.8 CLASS FOLLOWING NORM E25-30  
 COUPLE SERRAGE : 8Nm ±10%  
 SCREWING TORQUE : 8Nm ±10%  
 (VOIR NOTE 7 PAGE 1) / (SEE NOTE 7 ON PAGE 1)

ET / AND  
 4x RONDELLES PLATES: Z 6 U SUIVANT NFE 27-611  
 4x WASHER: Z 6 U FOLLOWING NFE 27-611

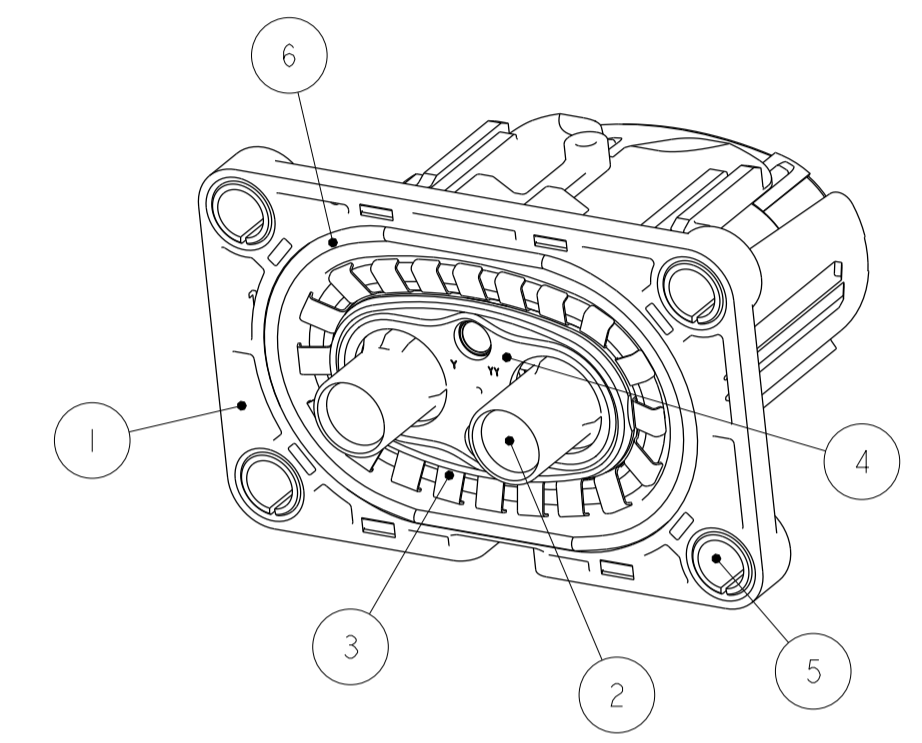
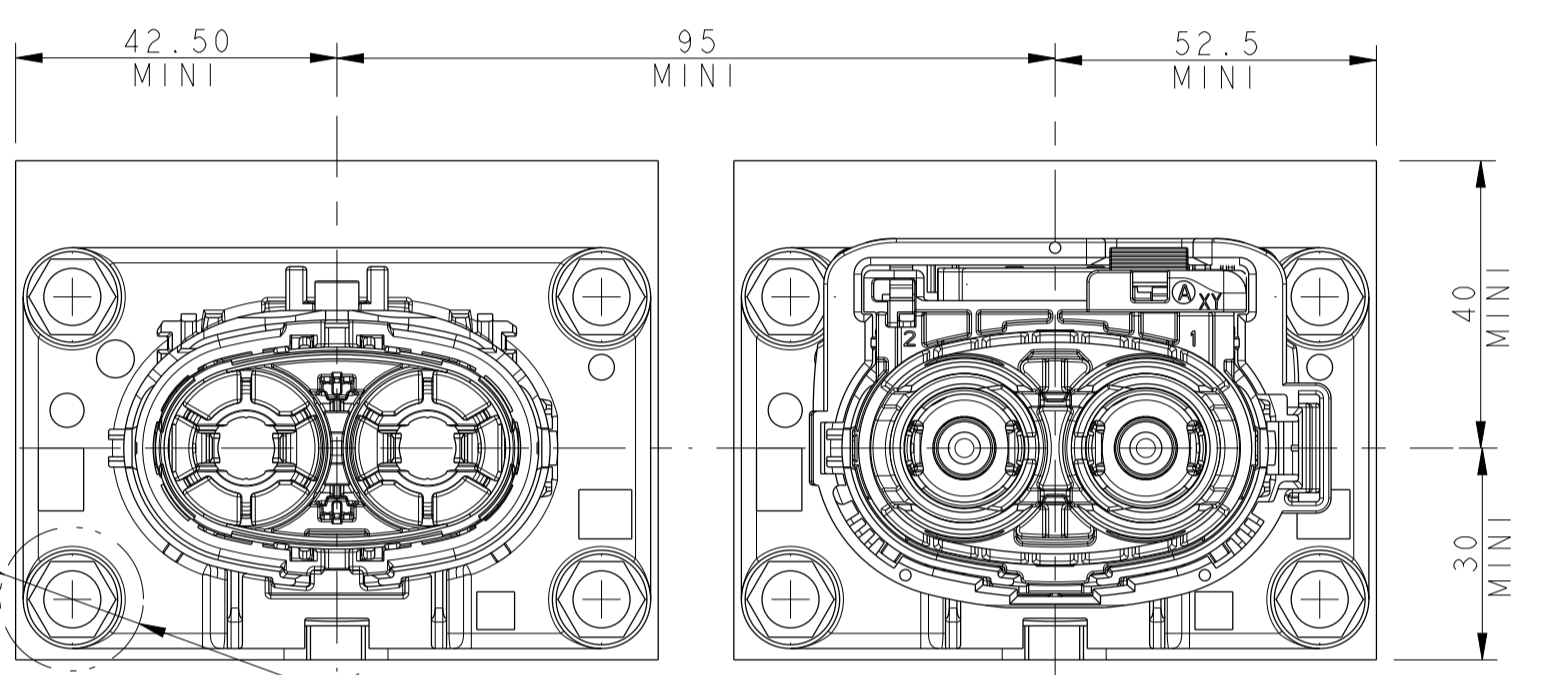
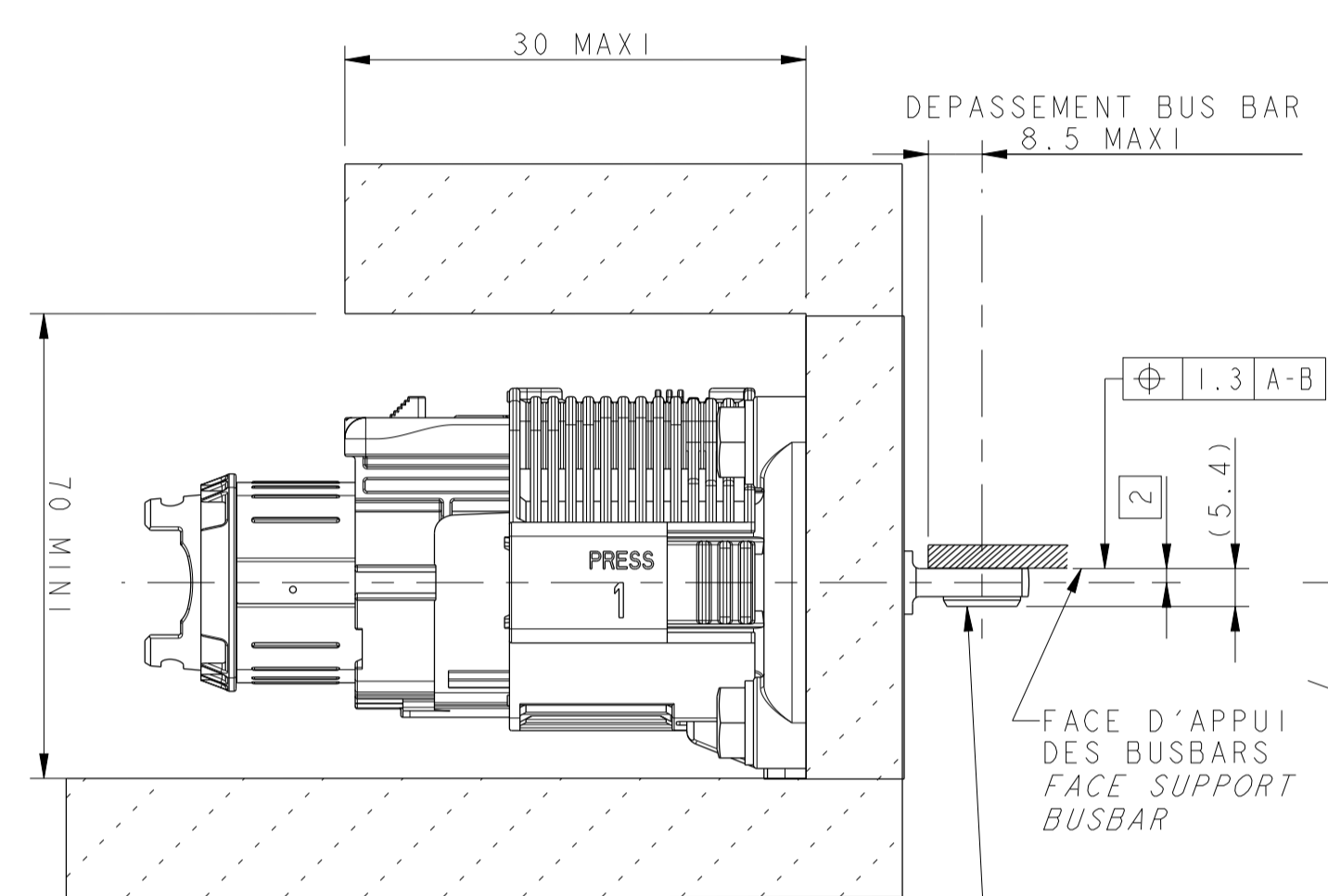
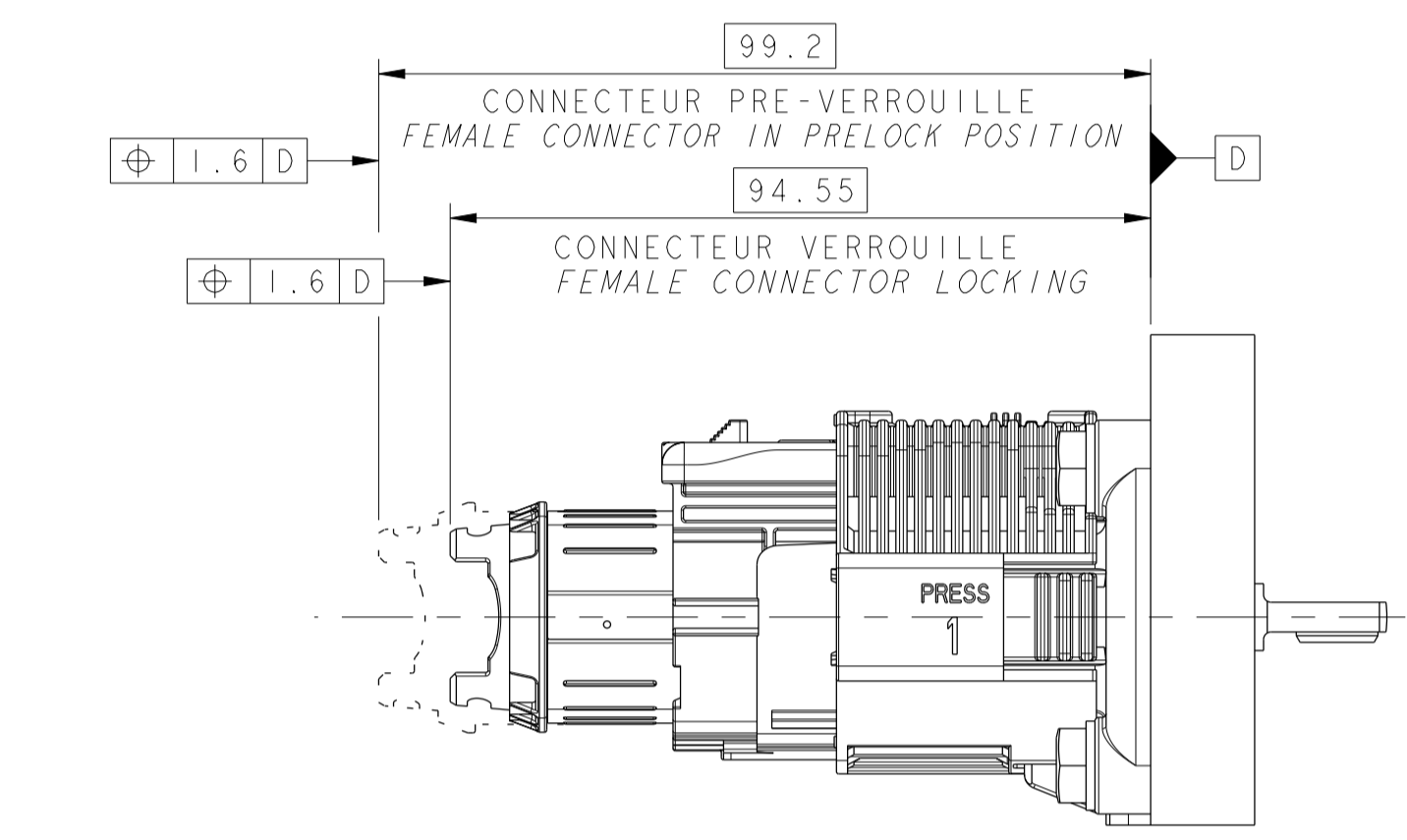
OU / OR  
 4x VIS M6 TETE HEXAGONAL TYPE 1  
 SUIVANT NES 2114\_2006-N1)  
 4x SCREWS M6 HEXAGONAL HEAD TYPE 1  
 FOLLOWING NES 2114\_2006-N1)  
 COUPLE DE SERRAGE : 8Nm±10%  
 SCREWING TORQUE : 8Nm±10%  
 (VOIR NOTE 7 PAGE 1)  
 (SEE NOTE 7 ON PAGE 1)



REPERE	DESIGNATION TITLE	COULEUR COLOR	MATIERE MATERIAL	QUANTITE QUANTITY
1	BOITIER EXTERNE OUTER HOUSING	ORANGE ORANGE	PBT 15% FV PBT GF 15	1
2	MODULE INNER HOUSING	ORANGE ORANGE	PBT 15% FV PBT GF 15	1
3	BLINDAGE SHIELD	-	ALLIAGE DE CUIVRE COPPER ALLOY	2
4	JOINT PLAT FLAT SEAL	GRIS GREY	SILICONE LSR LSR SILICON	1
5	INSERT METALLIQUE METALIC INSERT	-	ACIER CARBON STEEL	4
6	JOINT DE BLINDAGE SEAL FOR SHIELD	GRIS GREY	SILICONE LSR LSR SILICONE	1

POSITION DU BUSBAR :  
 BUSBAR POSITION:

DIMENSION L EN FONCTION DES LANGUETTES RCS800 L DIMENSION DEPENDS ON THE RCS800 MALE TERMINALS		VERSION	DIMENSION L L DIMENSION
REFERENCE DES CONTACTS PART-N° OF THE MALE TERMINALS			
MVL	DELPHI	STD	24.8
F076600	PE211634	VI	46.8
F176600	33511746	V2	70.8
F276600	33511747		



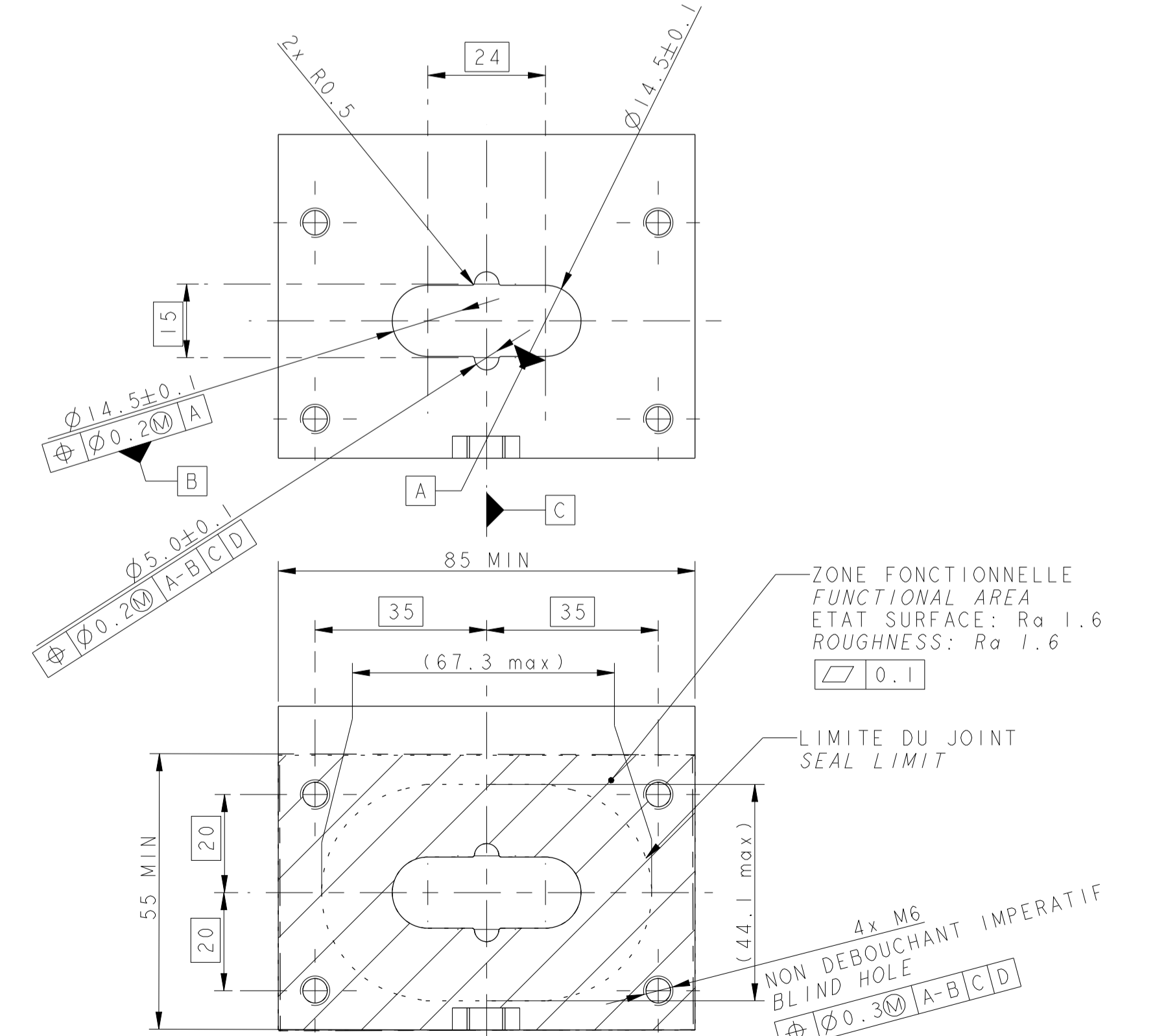
NOTE:

FIXATION DU CONTACT MALE SUR BUSBAR AVEC VIS H M6 CLASSE 8.8 SUIVANT E25-30  
 COUPLE SERRAGE : 8Nm±15%

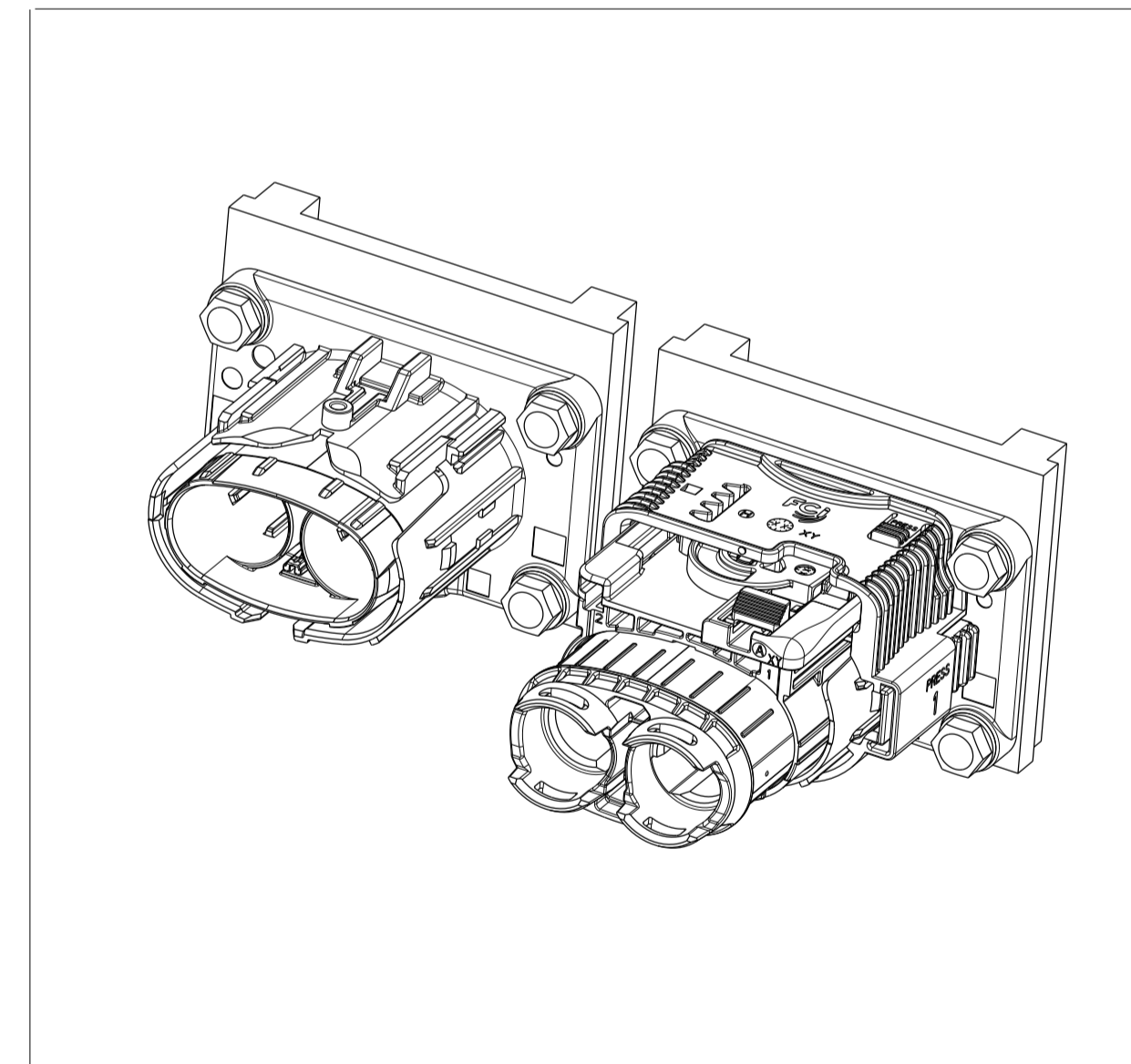
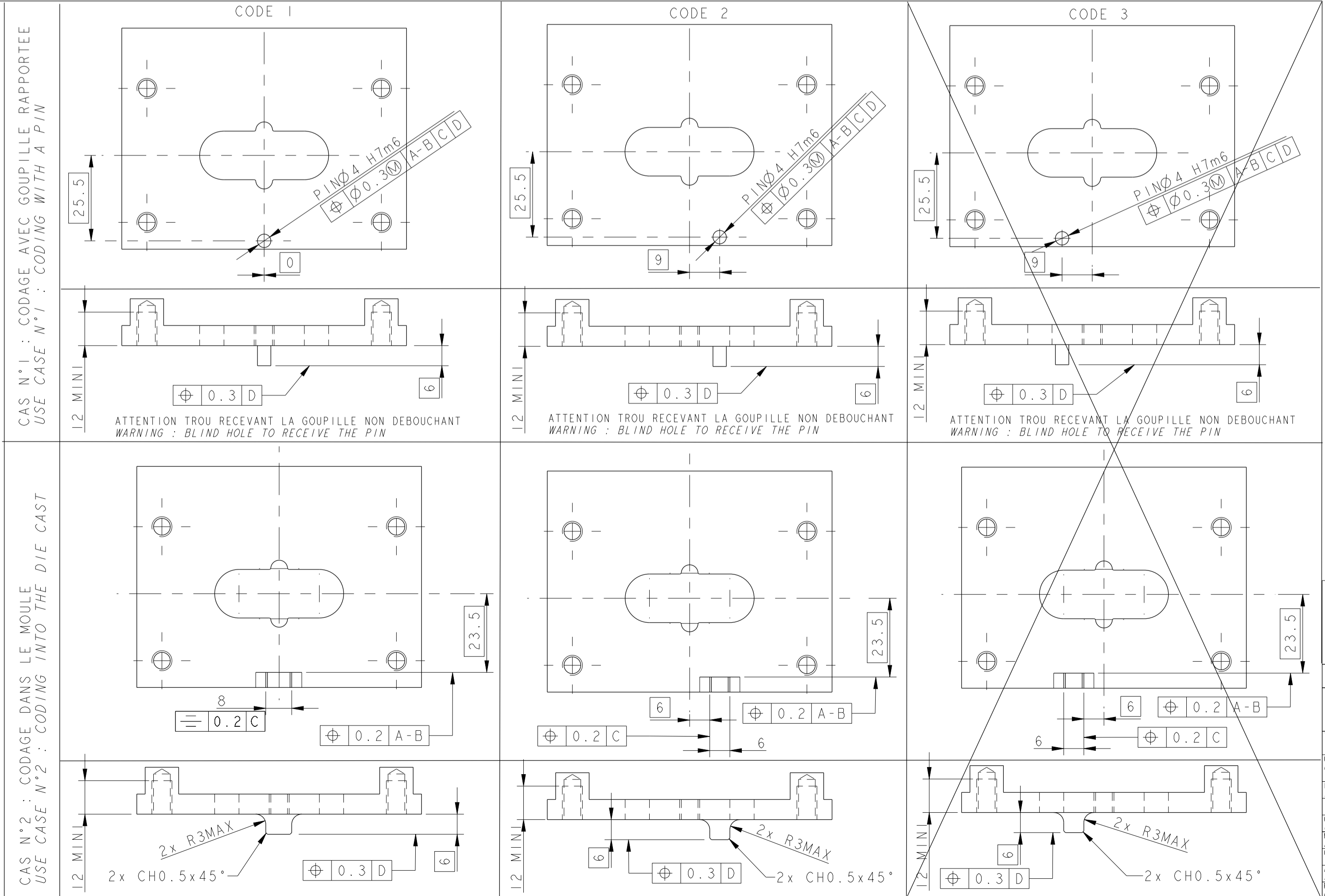
FIXATION OF THE MALE TERMINAL ON THE BUSBAR WITH H M6 CLASS 8.8 SCREW FOLLOWING E25-30  
 SCREWING TORQUE : 8Nm±15%

INTERDICTION DE MONTER LE BUSBAR  
 SUR CETTE FACE DU CONTACT  
 IT'S PROHIBITED TO MOUNT THE BUSBAR  
 ON THIS FACE OF THE CONTACT

DEFINITION DE L'INTERFACE POUR MONTAGE EMBASE /  
 DEFINITION OF THE INTERFACE TO ASSEMBLE THE HEADER



NOTE:  
 1 - LA REFERENCE [C] EST DEFINIE AU MILIEU DE [AB] NORMALE A [A-B]  
 THE REFERENCE [C] IS DEFINED IN THE MIDDLE OF SEGMENT [AB] NORMAL TO THE REFERENCE [A-B]  
 2 - MATIERE: ALLIAGE D'ALUMINIUM (TENUE BROUILLARD SALIN  
 + TEST ELECTRIQUE DE LA FE PS 10 005)  
 MATERIAL: ALUMINIUM ALLOY (SALT SPRAY TEST  
 + ELECTRICAL TEST FROM FE PS 10 005)



15-11822

SHEET 1: UPDATED PART REVISION FROM G TO H AND O1 TO O2  
 RISED PRESS 1 AND PRESS 2 FEATURES, IN ORDER TO FACILITATE THE CONNECTOR UNMATING

ECN-NO. NUMERO ECH	POSITION	CHANGE DESCRIPTION

DELPHI  
 PCC0732944  
 SERIAL RELEASED  
 See Table